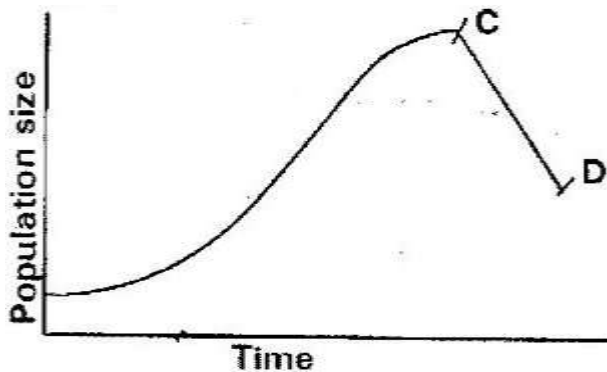


ECOLOGY

PAST KCSE QUESTIONS ON THE TOPIC

1. State how excessive use of pesticides may affect soil fertility
2. The graph below represents a population growth of a certain herbivore in a grassland ecosystem over a period of time.



Suggest three factors that could have caused the population change between C and D

(3 marks)

3. A biologist carried out a study to investigate the growth of a certain species of herbivorous bony fish and the factors influencing plant and animal life in four lakes A, B, C and D. The lakes were located in the same geographical area.

Two of the lakes A and B were found to contain hard water due to presence of high content of calcium salts. The mean body length of 2 year old fish, amount of plant life and invertebrates biomass in each lake were determined. The data was as shown in

Lakes	Mean body length (cm)	Type of water	Amount of plant life	Invertebrate biomass (g/cm ³)			
				Insects	Snails	Crabs	Worms
A	31.2	Hard	1050	11	300	10	180
B	28.6	Hard	950	72	100	9	90
C	18.4	Soft	1.2	97	0	2	20
D	16.3	Soft	0.5	99	0	1	10

- (a) Describe the procedure that may have been used to determine the mean body length of the fish (6 marks)
- (b) What are the likely reasons for the difference in the mean body length of the fish living in lakes A and D? (4 marks)
- (c) Suggest one reason for the absence of snails in lakes C and D? (1 mark)
- (d) (i) Name any six abiotic (physical) factors that are likely to influence the plant and animal life in lake A. (3 marks)
- (ii) Explain how each of the factors named in (i) may influence the plant and animals life in Lake A. (6 marks)
4. During an ecological study of a lake a group of students recorded the following observations.
- (i) Planktonic crustaceans feed on planktonic algae
- (ii) Small fish feed on planktonic crustaceans worms and insect larvae

- (iii) Worms feed on insect larvae

- (iv) Bird species feeds on small fish planktonic crustaceans and worms
- (v) Insect larvae feed on small fish
- (a) From this record of observations construct a feed web (5 marks)

- (b) From the food web you have constructed in (a) above isolate and write down a food chain that ends with
 - (i) Bird species as a secondary consumer (1 mark)
 - (ii) Large fish as tertiary consumer (1 mark)

- (c) The biomass of the producers in the lake was found to be greater than that of primary consumers. Give an explanation for this observation? (1 mark)

- (d) Using either the observations recorded by the students or the food web you have constructed name (1 mark)
 - (i) Two organisms that compete for food in the lake. (2 marks)
 - (ii) The source of food the organisms in d (i) above compete for (1 mark)

- (e) (i) State three ways by which many may interfere with this lake ecosystem (3 marks)

- (ii) Explain how each of the ways you have states may affect life in the lake? (6 marks)

5. In an investigation, a student collected two plants A and B. Plant A had hairy leaves and epidermis. Leaves of plant B

(i) Plant A (1 mark)

(ii) Plant B (1 mark)

6. An investigation was carried out between 1964 and 1973 to study the changes of fish population in a certain small lake. Four species of fish A, B, C and D were found to live in this lake. In 1965 a factory was built near the lake and was found to discharge hot water into the lake raising the average temperature from 25°C to 30°C. In 1967 sewage and industrial waste from a nearby town was diverted into the lake was stopped. The fish population during the period of investigation is shown in the table below.

Fish species	Fish populations during the period						
	1964	1966	1969	1970	1971	1972	1973
A	6102	223	26	106	660	4071	7512
B	208	30	11	22	63	311	405
C	36	100	0	0	0	0	0
D	4521	272	23	27	79	400	617

- (a) (i) In which year were the fish populations lowest?
- (ii) State the factors that might have caused the lowest fish populations during the year you have stated in (a) (i) above (3 marks)
- (iii) Explain how each factor you have stated in (a) (ii) above could have brought about the changes in fish populations (11 marks)

(b) (i) What is the difference in the rate of population recovery of species A and

D?

(1 mark)

- (ii) Suggest two biological factors that could have led to this difference
(2 marks)
- (c) (i) State a method that might have been used to estimate the fish population
in the lake (1 mark)
- (ii) State one disadvantage of the method you have stated in (c) (i) above
(1 mark)
7. Industrial wastes may contain metallic pollutants. State how such pollutants may indirectly reach and accumulate in the human body if the wastes were dumped into rivers.
8. State three measures that can be taken to control infection of man by protozoan parasites
(3 marks)
9. The chart below shows a feeding relationship in a certain ecosystem

Green plants

Hawks

- (b) Which organisms has the largest variety of predators in the food web? (1 mark)
- (c) Name secondary consumers in the food web (2 marks)
- (d) Suggest three ways in which the ecosystem would be affected if there was prolonged drought (3 marks)

10. To estimate the population size of crabs in a certain lagoon, traps were laid at random. 400 crabs were caught, marked and released back into the lagoon. Four days later, traps were laid again and 374 crabs were caught. Out of the 374 crabs, 80 were found to have been marked.

- (a) Calculate the population size of the crabs in the lagoon using the formula below

$$N = \frac{n \times M}{M}$$

Where

N= Total population of crabs in the lagoon

n= Total number of crabs in the second catch

M= Number marked crabs during the first catch

M= Number of marked crabs in the second catch. (2 marks)

- (b) State two assumptions that were made during the investigation (2 marks)
- (b) What is the name given to this method of estimating the population size? (1 mark)

11. The figure below represents a feeding relationship in an ecosystem

Termites

Gazelles

Leopards

(a) Write down the food chains in which the guinea fowls are secondary consumers

(1 mark)

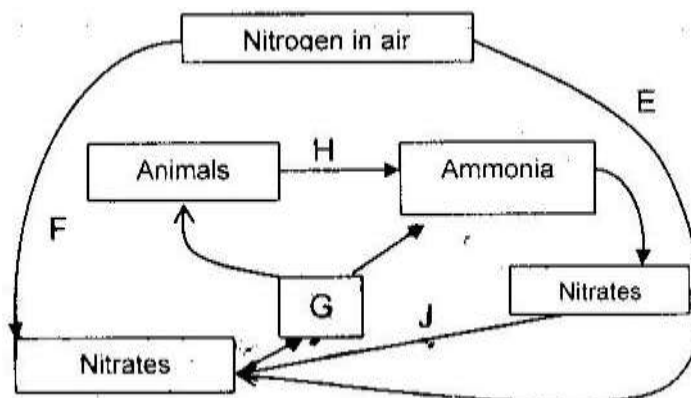
(b) What would be the short term effects on the eco- system if lions invaded the area?

(3 marks)

(c) Name the organisms through which energy from the sun enters the food web.

(1 mark)

12. The diagram below represents a simplified nitrogen cycle



- (b) Name the processes represented by F and H (2 marks)
- (c) Name the group of organisms represented by c (i)
13. (a) Distinguish between a community and a population (2 marks)
- (b) Describe how a population of grasshopper in a given area can be estimated (5 marks)
14. Explain how the various activities of man have caused pollution of air (20 marks)
15. Explain how birds of prey are adapted to obtaining their food (2 marks)
16. (a) Name the crop infested by phytophthora infestants and the disease it causes
- | | |
|---------|---|
| Crop | - |
| Disease | - |
- (b) State four control measures against the diseases (4 marks)
17. Explain why the carrying capacity for wild animals is higher than for cattle in a given piece of land (2 marks)
18. (a) What is meant by
- (i) Autecology (1 mark)
- (ii) Synecology (1 mark)
- (b) The number and distribution of stomata on three different leaves are shown in the table below

Leaf	Number of stomata	
	Upper epidermis	Lower Epidermis
A	300	0
B	150	200
C	02	13

Suggest the possible habitat of the plants from which the leaves were obtained.

(3 marks)

Leaf	Habitat
A	_____
B	_____
C	_____

(c) State the modification found in the stomata of leaf C

19. After an ecological study of feeding relationships students constructed the food web below

in the food web. Name them.

(1 mark)

- (ii) State the role played by the organisms named g (i) above. (1 mark)

(h) (i) State three human activities that would affect the ecosystems (3 marks)

(ii) How would the activities stated in h (i) above affect the ecosystems?

(3 marks)

20. How is aerenchyma tissue adapted to its functions?

(2 marks)

21. Explain how abiotic factors affect plants

(20 marks)

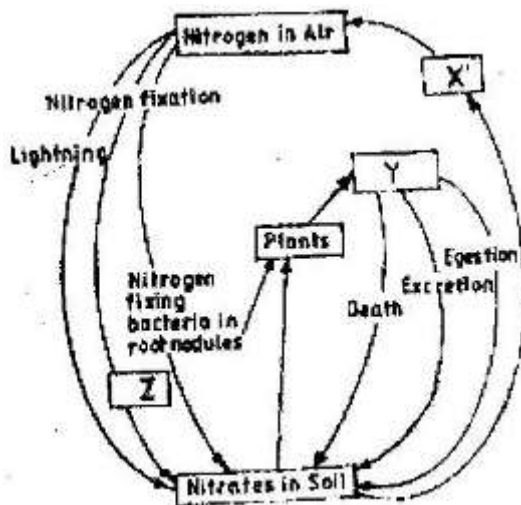
22. What is the importance of the following in an ecosystem?

(3 marks)

(a) Decomposers

(b) Predation

23. Chart below represents a simplified nitrogen cycle



What is represented by X, Y and Z? (3 marks)

24.

(a) Distinguish between pyramid of numbers and pyramid of Biomass

(2 marks)

(b) Give three reasons for loss of energy from one trophic level to another in a food chain. (3 marks)

(c) Describe how the belt transect can be used in estimating the population of a shrub in a grassland (2 marks)

25.

(a) Distinguish between population and community (2 marks)

(b) Name a method that could be used to estimate the population size of the following organisms

(i) Fish in a pond (1 mark)

(ii) Black jack in a garden (1 mark)

26.

State two ways in which schistosoma species is adapted to parasitic mode of life

27.

Describe causes and methods of controlling water pollution (20 marks)

28. (a) What is biological control of population growth? (2 marks)

(b) Describe one example where biological control has been used successfully

(2 marks)

(c) Explain why the number of predators in any ecosystem is less than the number of their prey (1 mark)

29. Suggest reasons to account for the following observations.

(b) Antelopes are more commonly found in open grassland while giraffe while giraffes are commonly found in wooded areas. (2 marks)

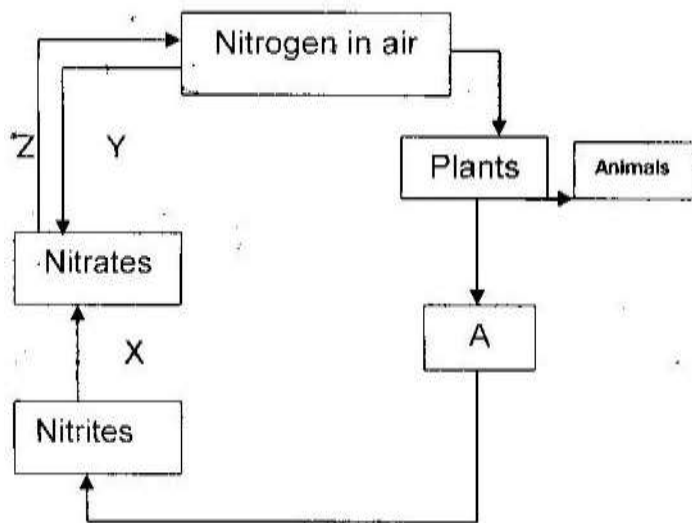
(b) In the savannah there is a wider variety of herbivores in wooded areas than in open grassland (1 mark)

(c) Removal of predators for an herbivore may in the long run lead to a decrease in its population

30. Explain why primary productivity decreases with depth in aquatic environments.

(2 marks)

31. The following is a simplified drawing of nitrogen cycle.



(a) Identify the compound named A (1 mark)

(b) Name the processes

X _____

Y _____

Z _____

(c) In what form is nitrogen found in plants and animals?

32. An investigation was carried out to study the type of food eaten by birds found in forest and savannah in a certain area. The table below compares the feeding habitats of the birds found in a closed forest area and an open dry savannah of the area.

Diet	Percentage of birds
------	---------------------

	Forest	Savannah
Insects only	60	50
Vertebrates	10	10
Seeds	5	20
Fruits	25	10
Other plant materials	5	5
Number	120	60

- (a) Work out the difference in the number of bird species the feed on:
- (i) Fruits found in forest and savannah (2 marks)
 - (ii) Seed found in forest and savannah (2 marks)
- (b) State two factors that may cause this difference in (a) above (2 marks)
- (c) In another investigation two vertebrate species from the savannah were counted and recorded on monthly basis as shown below.

Year	Month	Species A	Species B
1998	July	96	240
1998	August	79	590
1998	September	75	900
1998	October	87	750
1998	November	-	230
1998	December	99	80
1998	January	129	200
1998	February	96	330
1998	March	99	300
1998	April	79	320
1998	May	135	90
1998	June	104	450

- (i) Which species show more fluctuation in numbers? (1 mark)
- (ii) Suggest an explanation of this (3 marks)
- (d) Suggest two ways by which the savannah environment can be destroyed and how it can be conserved (4 marks)