

NAMEADM. NOCLASS:.....

DATE.....

231/3

BIOLOGY
PAPER 3
PRACTICAL

TIME: 1³/₄HRS

2020 FORM 4 TERM 1 ENTRY EXAMS

KENYA CERTIFICATE OF SECONDARY EDUCATION

Instruction to Candidates

- Write your Name, Adm. No., Class and Date in the spaces provided
- Answer all the questions
- You are required to spend the first 15 minutes of the 1³/₄Hrs allowed for this paper reading the whole paper carefully before commencing your work
- Answers must be written in the spaces provided in the question paper. Additional Pages must not be inserted.

FOR EXAMINER'S USE ONLY

QUESTION	MAXIMUM SCORE	CANDIDATE'S SCORE
1	16	
2	8	
3	16	
TOTAL SCORE	40	

1. You are provided with specimen labelled F. Examine the specimen.

a) With reasons state the type of fruit specimen F is. (1mk)

Reason (1mk)

b) Carefully open specimen F to expose it's contents

i) State the type of placentation in the specimen. (1mk)

ii) Draw and label the opened specimen. (5mks)

iii) Work out your magnification. (2mks)

- c) Remove the seeds and crush them using a mortar and pestle to make a paste. Add a little water to make about 10ml solution of the paste.

Using the reagents provided test for the food substances present in the juice. Record the food substances being tested, procedures, observation and conclusion in the table below. (6marks)

SUBSTANCE BEING TESTED	PROCEDURE	OBSERVATION	CONCLUSION

--	--	--	--

2. Identify the specimens in the photograph using the key and outline the steps followed to identify each specimen. (8mks)



A



B



C



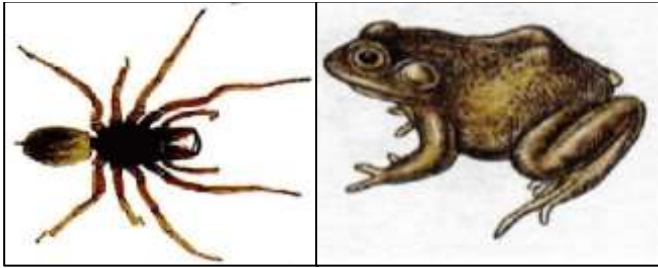
D



E



F



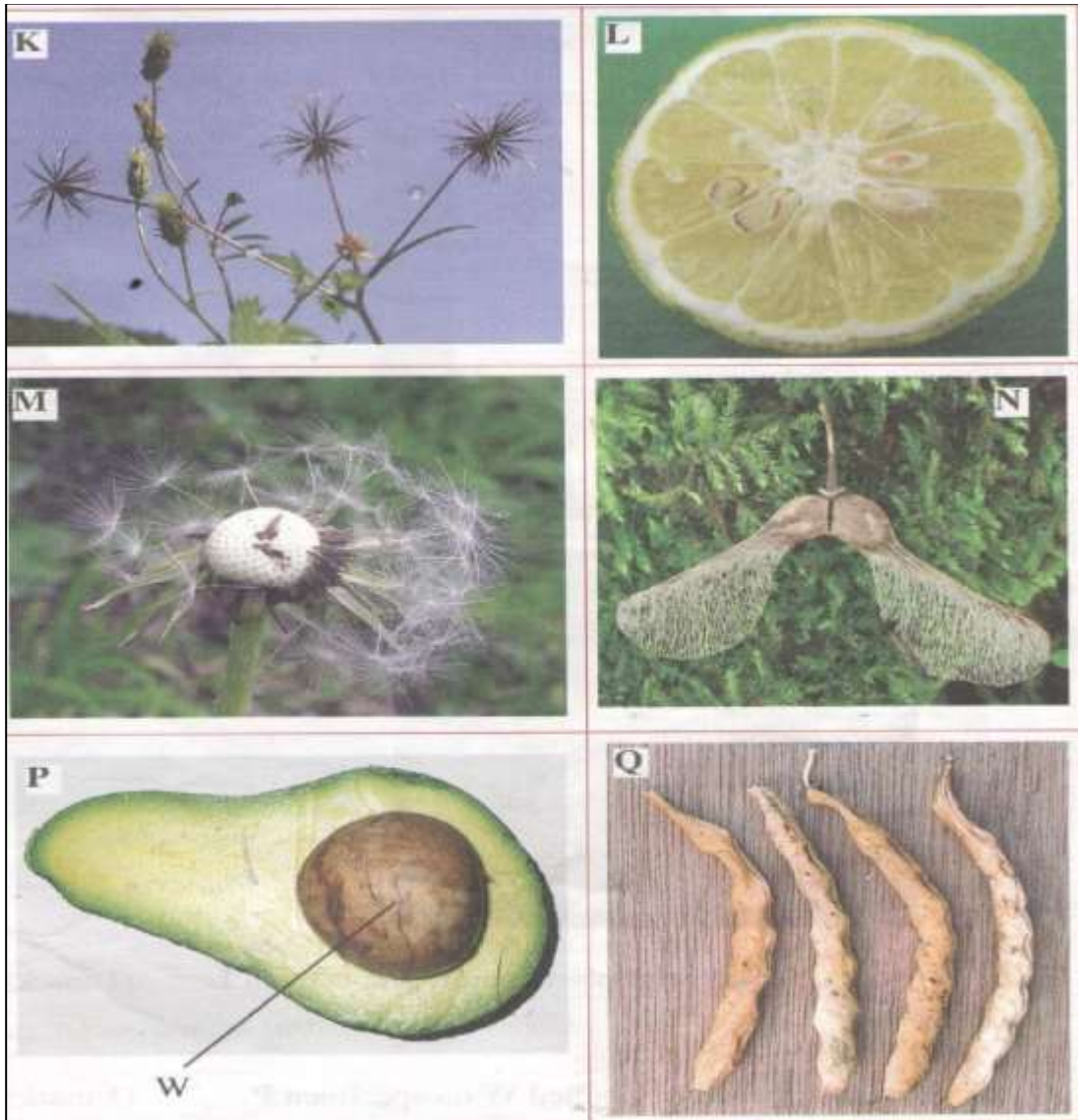
G

H

1. (a) Animals with a backbone Go to 2
 (b) Animals without a backbone Go to 5
2. (a) Animals with wings..... Eagle
 (b) Animals without wings go to 3
3. (a) Animals which live in water all the time..... go to 4
 (b) Animals which live in water some time..... Frog
4. (a) Animals with fins Fish
 (b) Animals without fins Turtle
5. (a) Animals with legs Go to 6
 (b) Animals without legs go to 7
6. (a) Animals with six legs Butterfly
 (b) Animals with eight legs Spider
7. (a) Animals with a shell..... Snail
 (b) Animals without a shell..... go to 8
8. (a) Animals with a jelly-like body go to 9
 (b) Animals without a jelly-like body Starfish
9. (a) Animals with a segmented body Earthworm
 (b) Animals without a segmented body Octopus

SPECIMEN	STEP FOLLOWED	IDENTIFY
A		
B		
C		
D		
E		
F		
G		
H		

3. Below are photographs of specimens obtained from plants. Examine the photographs.



a) In the table below name the mode of dispersal and the features that adapt the specimen(s) to that mode of dispersal. (12marks)

Specimen	Mode of dispersal	Adaptive feature
K		
L		
M		
N		

P		
Q		

- b) i) Label any two parts on specimen (L (on the diagram) (2mks)
ii) State the type of placentation in specimen L. (1mk)

c. Name the structure labelled W on specimen P. (1mark)