

NAME: ..... DATE: .....

ADM NO: ..... CANDIDATE'S SIGNATURE: .....

443 / 2

AGRICULTURE PAPER TWO

FORM THREE

TIME: 2 HOURS

TERM TWO

### MID TERM TWO

#### INSTRUCTIONS TO CANDIDATES

1. Write your name and admission number in the spaces provided above.
2. This paper has **THREE** sections: A , B and C.
3. Answer **ALL** the questions in section A and B and any **TWO** questions in section C.
4. **ALL** answers **MUST** be written in the spaces provided.

#### FOR EXAMINERS USE ONLY

SECTION	QUESTIONS	MAXIMUM SCORE	CANDIDATES SCORE
A	1 - 19	30	
B	20 - 23	20	
C		20	
		20	
TOTAL		90	

**SECTION A: (30 MARKS)**

**Answer all questions in this section in the spaces provided.**

1. Differentiates between apiculture and aquaculture. (1mk)  
.....  
.....  
.....
  
2. State three ways of preventing predation in a fish pond. (1½mk)  
.....  
.....  
.....
  
3. Name one livestock disease that is transmitted by each of the following parasites.  
a) Brown ear tick. (½mk)  
.....  
b) Tse-tsefly. (½mk)  
.....
  
4. Define the following terms as used in livestock production;  
a) Vaccination. (½mk)  
.....  
b) Tapping (½ mk)  
.....
  
5. State the intermediate host for liverflukefasciola (spp) (½mk)  
.....
  
6. State two roles of drones in a bee colony. (1mk)  
.....  
.....
  
7. State four breeds of rabbit. (2mks)  
.....  
.....  
.....
  
8. State four importance of keeping animals healthy (2mks)  
.....  
.....  
.....

9. State four major routes of administering vaccines to livestock. (2mks)

.....

.....

.....

.....  
10. State four factors considered by farmers when sitting a beehive in the farm. (2mks)

.....  
.....  
.....  
.....

11. Give two examples of arachnids parasites (2mks)

.....  
.....

12. State four characteristics of Aberdeen Angus class of cattle. (2mks)

.....  
.....  
.....  
.....

13. State four importances of farm buildings. (2mks)

.....  
.....  
.....  
.....

14. State two causes of bloat in ruminants. (1mk)

.....  
.....

15. Name four exotic breeds of cattle. (2mks)

.....  
.....  
.....  
.....

16. State four characteristics of roughage feedstuff. (2mks)

.....  
.....  
.....  
.....

17. List four causes of livestock diseases.

(2mks)

.....

.....

.....

.....

18. State two ways of improving tool efficiency in work (1mk)  
.....  
.....

19. Name the tools used to for;  
a) Carrying out open method of castration of livestock. (1mk)  
.....

b) Cutting thick sheets of metal. (1mk)  
.....

**SECTION B: (20 MARKS)**

**Answer all questions in this section in the spaces provided.**

20. The diagram below shows a routine operation on sheep. Study it carefully and use it to answer the questions that follow below.

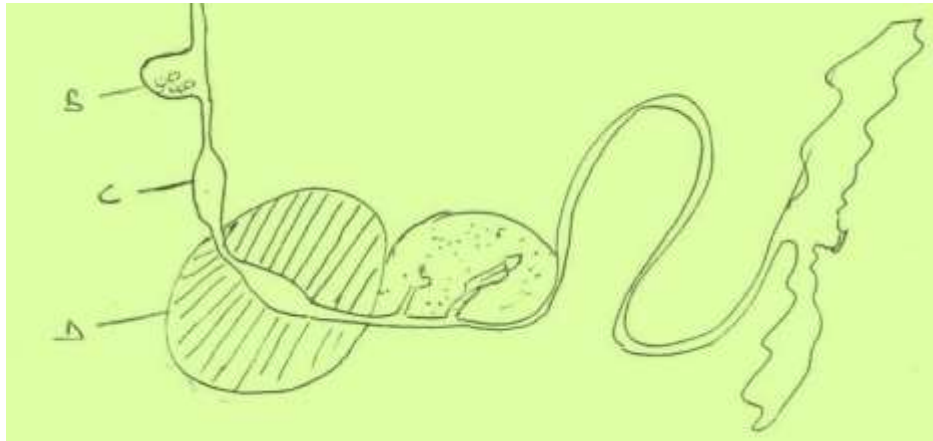


a) Identify the operation. (1mk)  
.....

b) Give two reasons for the operation. (2 mks)  
.....  
.....

c) Name tools used to carry out the operation. (2mks)  
.....  
.....

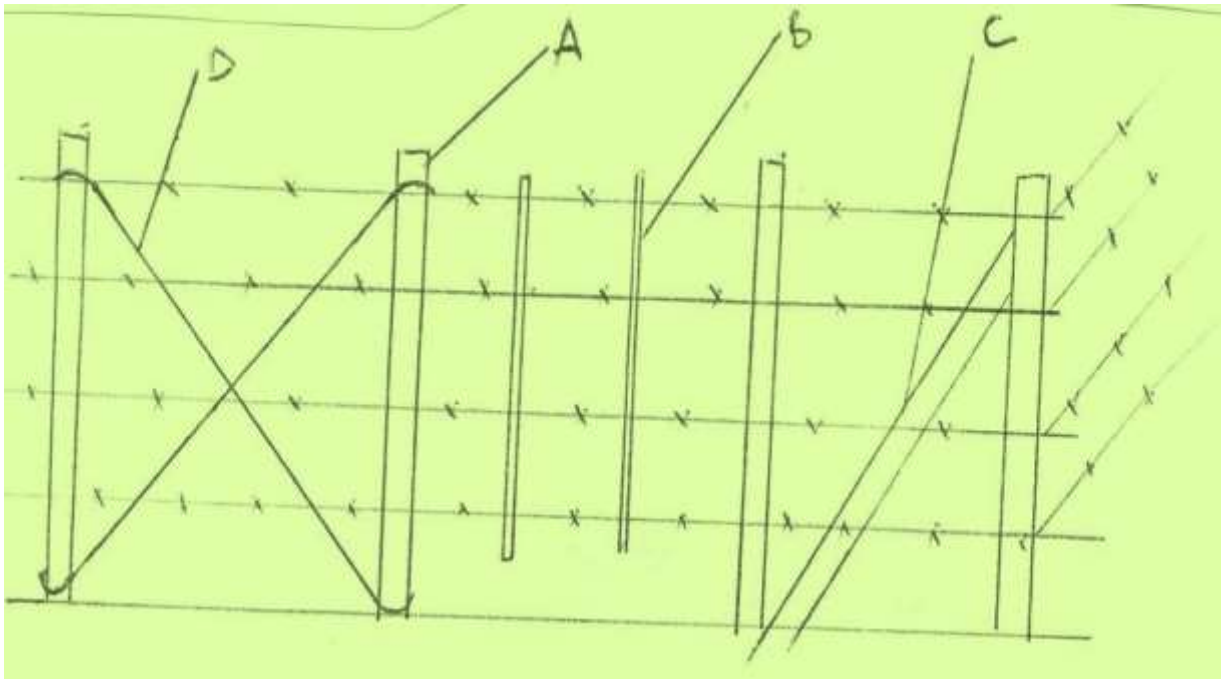
21. The diagram below shows poultry digestive system. Use it to answer the questions that follows.





- a) State the function of part labeled **B**. (1mk)  
.....
- b) Why is part **C** known as the true stomach? (1mk)  
.....
- c) State **two** advantages of part labelled **D** to its functions. (2mks)  
.....  
.....
- d) What management practice is carried out on part **A**? (1mk)  
.....

22. The diagram below is of an illustration of a farm structure. Study it and answer the questions that follow.

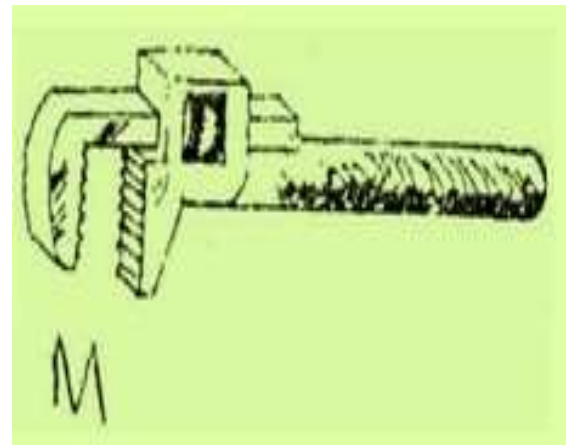
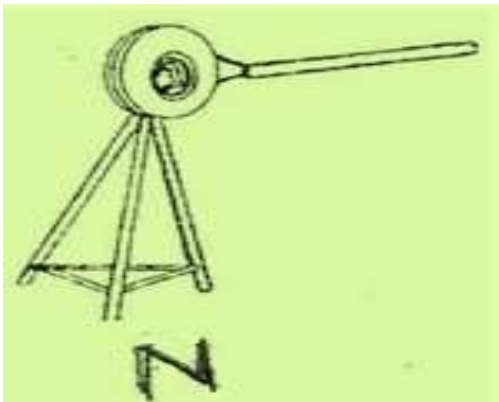
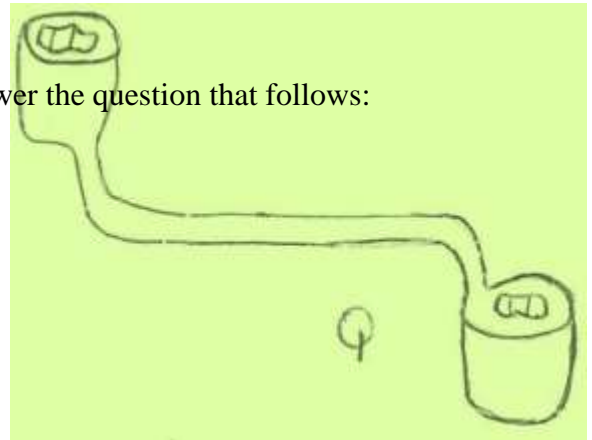
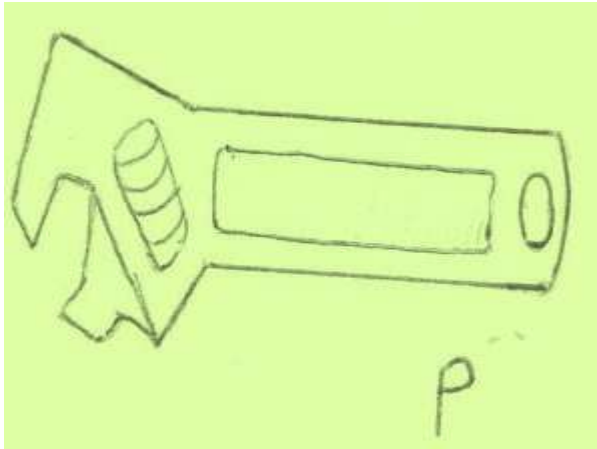


- a) State the type of the fence. (1mk)  
.....
- b) Name the parts labeled: (2 mks)  
.....  
.....

c) State **two** reasons why the above fence is not recommended for sheep production. (2mks)

.....

23. Below are illustrations of farm tools. Study them and answer the question that follows:



a) Identify **P** and **M**.

(1mk)

.....  
.....

b) State **one** advantage of **P** over **Q**.

(1mk)

.....  
.....

c) State the function of tool labeled **N** and **M**.

(2mks)

.....  
.....

- d) Give **two** maintenance practices that can be carried out on tool **P**. (1mk)

.....

**SECTION B: (20 MARKS)**

**Answer only two questions in this section.**

- 24.
- a) State ten advantages of artificial insemination in dairy production. (10mks)
  - b) Give five signs of lambing in sheep (5mks)
  - c) Give five signs of infestation by internal parasites in sheep (5mks)
- 25.
- a) Briefly discuss the management of a pig from birth up to weaning. (10mks)
  - b) List **four** examples of two host tick. (2mks)
  - c) Briefly discuss the life cycle of two host tick. (8mks)
- 26.
- a) Describe the procedure for collecting semen from a proven sire (5mks)
  - ~~b) Give seven management practices carried out in a crush (7mks)~~
  - c) Explain the various methods of controlling diseases on the farm (8mks)

**END OF PRINTED PAGE**