

Z
&
2iii,,,

TIMER NATIONAL SERIES
EVALUATION TEST

{5}

STD 5 SCIENCE

--a

1. Which one of the following does not affect weather?
A. Sun
B. Clouds
C. Rain
D. Moon

2. Which one of the following is the function of large intestines?

- A. Digests food
B. Digests roughages
C. Absorbs water
D. Absorbs digested food

3. The diagram below shows a type of root.



Which one of the plants named below does not have this type of roots?

- A. Grass
B. Millet
C. Pea
D. Maize

4. The rise of water in soil is called :
A. drainage
B. capillarity
C. texture
D. water retention

7. The main source of fibre in a diet is
A. legumes
B. grains
C. fruits and vegetables
D. water

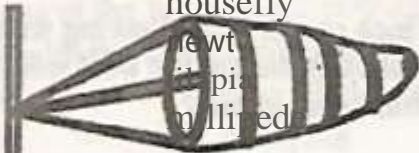
8. Which one of the following animals is correctly classified?

Vertebrates

- A. Man
B. Lizard
C. Snake
D. Wasp

Invertebrate

- housefly
newt
leopard
millipede



9. The instrument shown below is used to measure



5. Which of the following is a sea mammal ?

- A. Tortoise
B. Shark
C. Seal
D. Crocodile

6. Which one of the following is not a source of heat ?

- A. Fire
B. Our bodies
C. Sun

D. Moon

- A. speed of wind
 - B. strength of wind
 - C. direction of wind
 - D. direction and strength of wind
10. Which one of the following is not an oil crop?
- A. Cashewnuts
 - B. Sunflower
 - C. Flax
 - D. Macadamia
11. Which one of the following is not a component of soil?
- A. Humus
 - B. Air
 - C. Water
 - D. Heat

12. Which one of the following statements about the tooth drawn below is correct? It

- A. has cusps
- B. is a canine tooth
- C. is used for cutting
- D. is used for tearing food

13. Pumpkins are examples of

- A. fruits
- B. vegetables
- C. leaves
- D. root tuber

14. Which of the following farm activities is carried out during dry season?

- A. Planting
- B. Weeding
- C. Harvesting
- D. Harvesting

15. Which one of the following weather symbols indicates the best weather for winnowing grains:



16. Which one of the following is an effect of moving air?

18. The following are ways of caring for animals at home except

- A. housing
- B. feeding
- C. watering
- D. slaughtering

19. Which one of the following shows the correct order of change of state in matter?

- A. Solid – Gas – Liquid
- B. Solid – Liquid – Gas
- C. Gas – Solid – Liquid
- D. Liquid – Solid – Gas

20. Which of the following is a nutritional deficiency disease?

- A. Malaria
- B. Measles
- C. Anaemia
- D. Tuberculosis

The diagram below shows the breathing system. Use it to answer questions 21 to 23.

- A. Felling trees
- B. Winnowing
- C. Sailing boats
- D. Driving windmills

17. Temperature is measured using

- A. degrees Celsius
- B. a thermometer
- C. kilogram
- D. millibars



21. Name the parts labelled **P, Q, R** and **S** respectively

P Q R
S

- A. Trachea left lung diaphragm right lung
- B. Windpipe right lung diaphragm left lung
- C. Gullet left lung diaphragm right lung
- D. Trachea left lung chest cavity alveolus

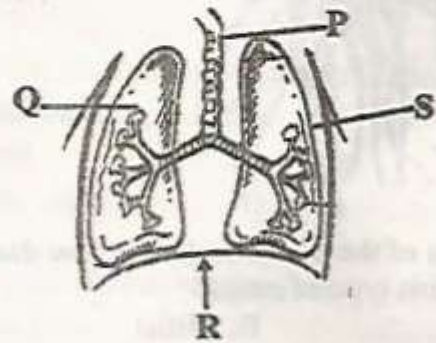
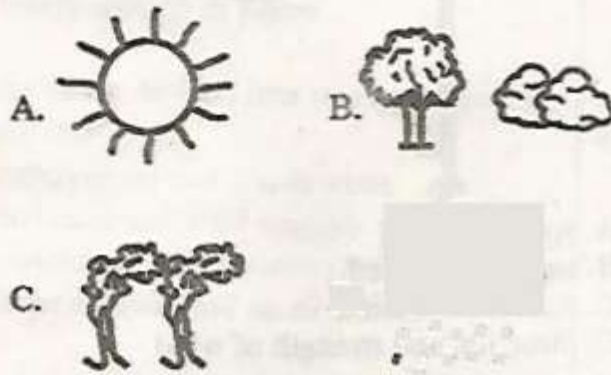
22. Which part cleans the air?

- A. P B. Q**
- C - D. S**

23. Which two parts expand during breathing in?

- A. Q and P
- B. P and S
- C. P and R
- D. R and S

crn << rmM << 1nn7 7021



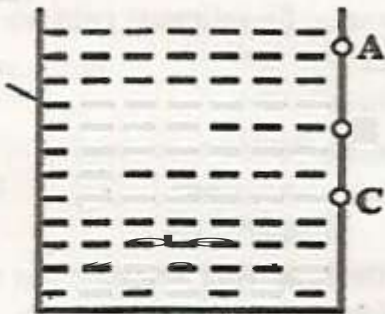
24. When air is heated it
 A. contracts B. cools
 C. expands D. evaporates
25. All the following belong to the same group except
 A. locust
 B. spider
 C. tick
 D. scorpion
26. When the arrow head of the windvane points to the south the wind is blowing from
 A. east B. west
 C. north D. south
27. The following are functions of parts of a plant
 i. Storage of food
 ii. Transport water to the leaves
 iii. Making of food for the plant
 iv. Absorption of water and mineral salts
 Which function is performed by roots, stem and leaves in plants?
 A. v B. ii
 C. i D. iv
28. One of the following will not sink in water. Which one?
 A. A long piece of metallic wire
 B. A long piece of wood
 C. A short metallic wire
 D. A small stone
29. From the diagram below, It is true to say that the

Water



30. Which one of the following is not an effect of too much heat on substances?
 A. Evaporation
 B. Expansion
 C. Melting
 D. Contraction
31. The appearance of smoke with an unpleasant smell when you heat soil in a container indicates the presence of _____ in the soil.
 A. air
 B. water
 C. organic matter
 D. living organisms
32. Which one of the following describes the use of water in recreation?
 A. Drinking B. Cooking
 C. Irrigation D. Surfing
33. Which one of the following is correctly grouped with the way of movement?
 Animals Way of movement
 A. Snail galloping
 B. Snake swimming
 C. Bat walking
 D. Kangaroo hopping
34. Which one of the following sentences about AIDS is false?
 A. AIDS is not curable.
 B. AIDS destroys the body's immunity.
 C. You can tell whether someone has AIDS by just looking at him/her.
 D. Some people who have HIV look very

35.



height

Which one of the following clouds are grey and are found low in the sky?

- A. longest jet of water was from hole A
- B. shortest jet of water was from hole C
- C.

shortest jet of water was from hole A D.
jets of water were equal in all holes

A. Nimbus
C. Stratus

B. Cumulus
D. Cirrus

36. Deciduous teeth in human beings are
- | | |
|-------|-------|
| A. 32 | B. 12 |
| C. 20 | D. 24 |

37. Which one of the following stages of HIV infection indicates presence of HIV in the body but no visible signs?

- A. Window stage
- B. Incubation stage
- C. Symptomatic stage

D. Full blown AIDS

38. Excess medicine that remains should be

- A. kept for later use
- B. given to friends
- C. destroyed or thrown into pit-latrine
- D. given to neighbour



39. The below experiment shows

— Transparent polythene bag

— Water droplets

A. absorption

B. transpiration

C. making of plant food

D. transportation in plants

40. Animals are divided into two main groups. These are

- A. carnivorous and omnivorous
- B. domestic and wild animals
- C. vertebrates and invertebrates
- D. large animals and small animals

43. Which one of the following properties of gases changes when it is heated and cooled?

- A. Colour
- B. Mass
- C. Volume
- D. Weight

44. Which one of the following is not a common characteristics to animals?

- A. Feeding
- B. Growth
- C. Reacting to changes in their environment
- D. Making their own food

45. Which one of the following is a natural source of light?

- A. Glow worms
- B. Electricity
- C. Candle
- D. Torch

46. The process in which solid turn to liquid after increase in temperature is

- A. freezing
- B. melting
- C. evaporation
- D. condensation

47. The path taken by moon when it goes around the earth is called

- A. orbit
- B. phase
- C. axis
- D. way

48. Chemicals should be sprayed

- A. near fires
- B. against the direction of wind
- C. in the direction of wind
- D. without wearing protective clothing

41. The following are methods of controlling weed except
- A. digging out
 - B. uprooting
 - C. using chemicals
 - D. planting
42. The daily brushing of teeth with toothpaste will check all the following except
- A. bleeding gums.
 - B. development of cavities.
 - C. bad smell.
 - D. development of dental floss.
49. Medicines used for relieving pain are called
- A. vaccines
 - B. pain killers
 - C. curative medicines
 - D. preventive medicines
50. Which of the following statements is not correct about tools? Tools should be
- A. cleaned after use
 - B. stored in a dry clean place
 - C. handled carefully
 - D. used for any purpose