

5 "HHS5NS" (6)

STD 42 SCIENCE

DE0062021

zaen

- In which part of the body does ovulation take place?
 - weir
 - Oviduct
 - Uterus
 - Vagina
- Which one of the food substances below help to maintain healthy teeth?
 - Chocolate
 - Cakes
 - Sugarcane
 - Biscuits
- Animals whose bodies are covered with hair or fur also
 - give birth to live young ones.
 - have constant body temperature.
 - only live on dry land.
 - have scales on their legs.
- The main reason why a rain gauge is dug into the ground is to
 - prevent it from harsh weather conditions.
 - reduce the amount of running water getting to it.
 - reduce the rate of evaporation.
 - prevent water from splashing to it
- Which one of the following is not true about zero grazing?
 - Less food is wasted.
 - Less labour is required.
 - It is easy to collect manure.
 - There is less movement of animals.

The following are characteristics of soil;

 - Poorly drained
 - Cracks when dry
 - Highest capillarity
 - Fine particles

The type of soil described above is

A. loam	B. sand
C. clay	D. silt

A person looks healthy and strong but medical test on HIV is positive. Which stage is he likely to be?

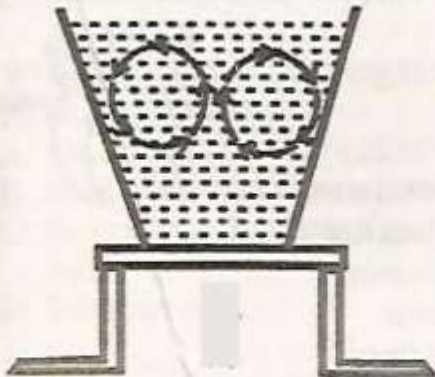
A. Symptomatic	B. Full blown
C. Window	D. Incubation

t

Three of the following are traditional methods of food preservation. Which one is **not**?

- A. Use of low temperatures
- B. Smoking
- C. Drying**
- D. Refrigeration

- A. convection in liquids
- B. conduction in liquids
- C. boiling of water
- D. radiation in liquids

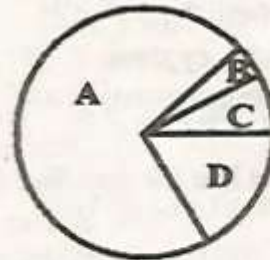


10. The pie chart below shows composition of air.

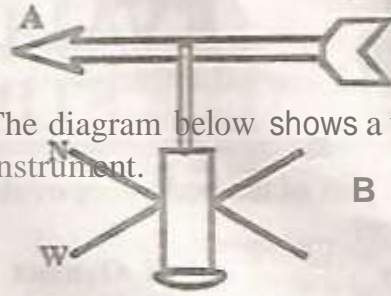
- 7. Which of the following letters is correctly matched with its use?
 - A. C - used in bulbs and tubes.
 - B. A - preserving soft drinks.
 - C. D - making proteins in leguminous plants.
 - D. B - used in germination.

8.

9.



11. Which one of the following is not true about nimbus clouds? They
- are found low in the sky.
 - indicate fine weather.
 - are mountaneous in appearance.
 - are dark grey in colour.
12. Which of the diseases below is a child immunised against at birth?
- Tetanus
 - Measles
 - Whooping cough
 - Tuberculosis
13. Which one of the following is not an artificial source of light?
- Stars
 - Sun
 - Moon
 - Firefly
14. Which one is not a method of grazing?
- Herding
 - Paddocking
 - Stall feeding
 - Rotational grazing
15. A child was diagnosed with the following signs and symptoms;
- Pale finger nails*
 - Dizziness*
- The child is likely to be suffering from
- anaemia
 - marasmus
 - rickets
 - kwashiokor
16. Which of the combinations below consists of non-green plants only?
- Algae, mushroom, puffball
 - Yeast, lichen, fern
 - Pine, lichen, cypress
 - Puffball, mushroom, yeast



19. The diagram below shows a weather instrument.

- Which statement is not true about it?
- The wind is blowing towards point A.
 - The size of the tail should be twice the arrow head.
 - The head points where the wind is blowing from.
 - It should not be firmly fixed to allow free rotation.

20. A process through which white light is split is known as

- spectrum
- reflection
- refraction
- dispersion

21. Mass is defined as

17. Which planet has the smallest orbit?

- Earth
- Neptune
- Mercury
- Jupiter

18. In which part of the alimentary canal is undigested food stored before being removed from the body?

- Anus
- Rectum
- Stomach
- Colon



- A. the pull of gravity on a body.
- B. the quantity of matter in a substance.
- C. the volume of matter in a substance.
- D. the heaviness of an object.

22. Which of the following parts of a flower protects it during the bud stage?
- A. Petal
 - B. Stigma
 - C. Sepal
 - D. Ovary

23. Below is a representation of a human tooth.

The problem shown is

- A. dental carries
- B. dental cavity
- C. gingivitis
- D. dental floss

24. Landslide is a form of erosion.
- A. gulley
 - B. sheet
 - C. splash
 - D. rill



25. The following are characteristics of a certain weed;

- i. Has yellow fruits when ripe.
- ii. Has purple flowers.
- iii. Leaves and stems have thorns.

The weed described above is

- A. thorn apple
- B. blackjack
- C. sodom apple
- D. mexican marigold

26. Which of the following ways is an artificial way of lighting a house? Using

- A. electricity
- B. transparent windows
- C. sky lights
- D. frosted glass

27. Sound travels fastest in which medium?

- A. Liquid
- B. Gas
- C. Vacuum
- D. Solid

28. Below is an experiment that was done to investigate a certain property of matter.

Rubber strip



What conclusion was made?

- A. The pins started falling one after another.
- B. All the pins fell off at the same time.
- C. Rubber is a poor conductor of heat.
- D. Pin I fell off first.

29. Which one of the following is not a function of roots?

31. The type of soil erosion where small holes are formed in the soil is called

- A. splash
- B. rill
- C. gully
- D. sheet

32. Which one of the following animal feeds is a concentrate?

- A. Lucern
- B. Silage
- C. Pasture
- D. Dairy meal

- A. Absorption of water and mineral salts.
- B. Food storage in some plants.
- C. Supporting the plants firmly in the soil.
- D. Transpiration.

30. Which one of the conditions below is not necessary for plants to make their own food?

38. A beam balance is used for
A. measuring the weight of an object.
B. measuring the volume of an object.
C. comparing heights of two objects.
D. comparing the mass of two objects.
39. Materials that do not allow light to pass through are called
A. translucent **B. transparent**
C. opaque **D. spectrum**
40. The transfer of pollen grains from one flower to another flower on a different plant of the same kind is known as
A. cross pollination
B. self pollination
C. ovulation
D. fertilisation
41. Which two processes requires loss of heat to the surrounding?
A. Freezing and condensation
B. Boiling and condensation
C. Evaporation and melting
D. Melting and freezing
42. Which one of the following consists of a balanced diet?
A. Ugali, meat and milk
B. Rice, chips and juice
C. Green grams, milk and rice
D. Chicken, chapati and chips
43. Which of the following parts of a male reproductive system is **wrongly matched** with its functions?
A. Testis - produces sperms
B. Sperm duct - passage of sperms and urine
45. Which of the following physical changes occur to both boys and girls during adolescence?
A. Deepening of the voice
B. Experiencing wet dreams
C. Menstruation
D. Growth of hair in pubic areas
46. The **most appropriate** method of controlling weeds in a large farm is by
A. uprooting
B. spraying with chemicals
C. slashing
D. digging them out
47. HIV stands for
A. Human Immune *Virus*
B. Human Immunity *Virus*
C. Human Immunodeficiency *Virus*
D. Health ignorance *Virus*
48. A human being has _____ sets of teeth.
A. 2 B. 20
C. 32 D. 4
49. Below are two pupils on a seesaw.
For Tracy to balance with Terry,
A. Terry should move closer to the pivot.
B. Tracy should move closer to the pivot.
C. Terry should jump up and down to

- C. Glands - produce fluids through which sperm cells swim
- D. Penis - allow passage of sperms

44. Which of the following diseases is not communicable?

- A. Malaria
- B. Typhoid
- C. Tuberculosis
- D. Tetanus

- increase her weight.
- D. both to remain where they are.

50. The type of soil with coarse particles

- A. has a lot of humus.
- B. drains water fastest.
- C. is the best for farming.
- D. has the highest capillarity.

