



FRONTRUNNER EXAM

STANDARD SIX 2021

6

FRONTRUNNER 007

SCIENCE

READ THESE INSTRUCTIONS CAREFULLY

Time: 2 Hrs

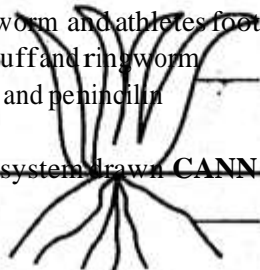
- You have been given this question paper and a separate answer sheet. The question paper contains 50 questions.
- Do any necessary rough work in this paper.
- When you have chosen your answer, mark it on the ANSWER SHEET, not in this question paper.

- The two types of teeth in the mouth used for grinding and chewing food are
 - Incisors and canines
 - Premolars and molars
 - Canines and premolars
 - Incisors and molars

- Jane saw some green plants growing on damp walls, stones and tree trunks during rainy season. They were **LIKELY** to be
 - Mosses
 - Algae
 - Ferns
 - Moulds

- Which pair of plants below are useful and non-green?
 - Yeast and dandruff
 - Ringworm and athlete's foot
 - dandruff and ringworm
 - Yeast and penicillin

- The root system drawn **CANNOT** be found in

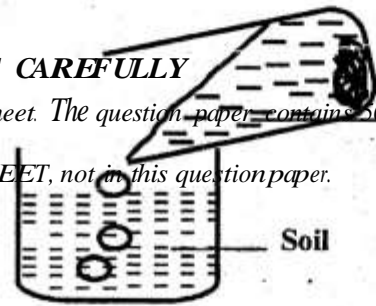


Leaves

Roots

- Maize
- Onion
- Coconut
- Beans

- Nelson was taken to a hospital as he had the following signs and symptoms

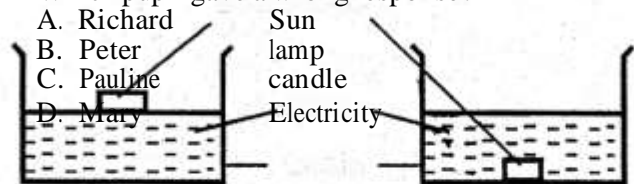


As water was poured in a container that had soil as shown, bubbles were seen coming out. That confirmed that soil contains?

- Water
- Air
- Humus
- Mineral particles

- Which statement is not true about foods and nutrition?
 - We should avoid eating sweet sugary foods
 - We are free to lick our fingers as we eat
 - It is important to have good eating habits
 - Each meal we eat should be a balanced diet

- A class was asked to name artificial sources of light. Which pupil gave a wrong response?



Bottle tops

Q

Water

- Violent diarrhoea with mucus
- Severe abdominal pains

p

gh

(ii) Vomiting

He **was LIKELY** suffering from _____

- A. Typhoid
- B. Bilharzia
- C. Cholera
- D. Malaria

Basin

P

During an experiment, a bottle top was put in a basin of water. It was shown. Another bottle top **was** crushed and put in basin Q. It sank because of a difference in

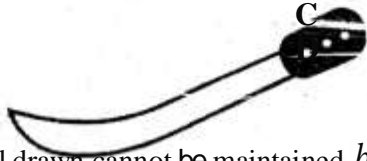
- A. Material
- B. Size
- C. Shape
- D. Weight

10. The diagram is of a tank of water installed to serve Ugunja Town. What is the best position to connect an inlet pipe?



A
B
C

11. The tool drawn cannot be maintained by



- A. Painting the blade B. Sharpening
C. Repairing broken handle D. Oiling the blade

12. Give two examples of protective foods?

- A. Kale, ripe banana B. Watermelon, maize
C. Oranges, termites D. Sardines, termites

13. Clay soil that has been burnt for a long time is **LIKELY to be**

- A. Yellow B. Blue C. White D. Red

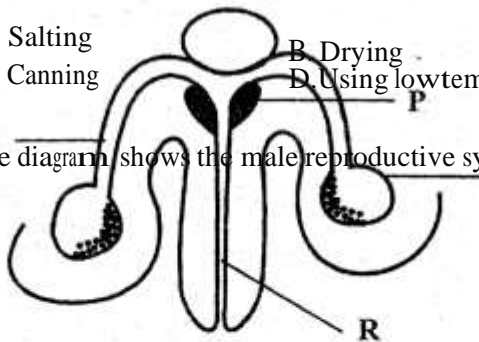
14. The following are poor methods of farming **EXCEPT**

- A. Overgrazing B. Deforestation
C. Burning bushes D. Cultivating across the slope

15. Give one method of preservation which is purely modern

- A. Salting B. Drying
C. Canning D. Using low temperature

16. The diagram shows the male reproductive system.



D. S

17. A certain disease attacks the nervous system and causes paralysis of some parts of the body such as arms and legs. What is the best time to give its vaccine?

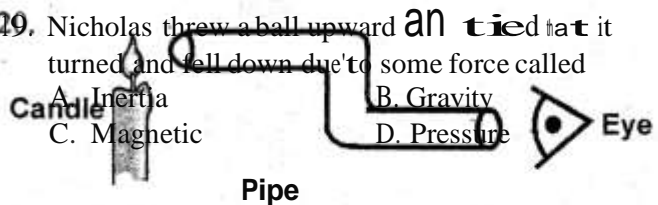
- A. Two years
B. One year
C. Nine months
D. Birth, six weeks, ten weeks, fourteen weeks

18. Which one of the following is not an effect of HIV infection on the nation?

- A. Provision of good health facilities
B. Low agricultural production
C. Increase in the number of school dropouts
D. Poor economy

19. Nicholas threw a ball upward and it turned and fell down due to some force called

- A. Inertia B. Gravity
C. Magnetic D. Pressure



Candle

Pipe

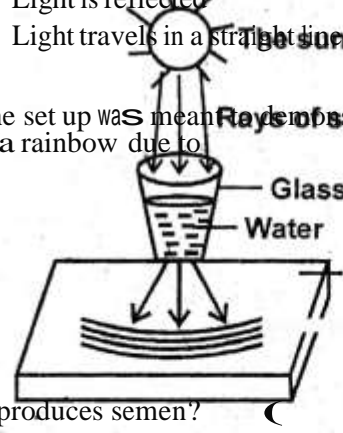


Eye

Kevin observed a burning candle through a pipe as shown. He could not see light because ____

- A. Light travels in all directions
B. Light is refraction
C. Light is reflected
D. Light travels in a straight line

21. The set up was meant to demonstrate formation of a rainbow due to



The sun

Rays of sun

Glass

Water

Which part produces semen?

- A. Q B. R C. P

- A. Reflection of light
- C. Bending of light

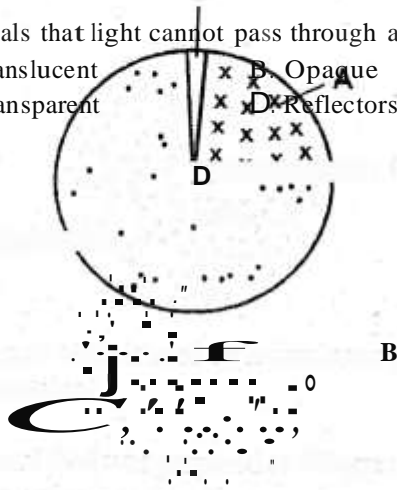
White paper
— Rainbow

- B. Refraction of light
- D. Dispersion of light

Science 6

22. Materials that light cannot pass through are said to be
- Translucent
 - Opaque
 - Transparent
 - Reflectors

23.



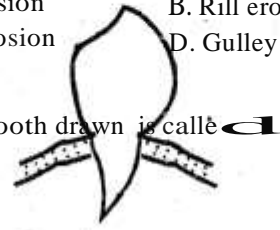
Which part of air is used by leguminous plants to make proteins?

24. An animal feed was prepared as follows:
- Harvesting was done during rains
 - It was dried to remove moisture
 - It was tied in bales to be used later.
- The feed was **LIKELY** to be
- Hay
 - Silage
 - Fodder crop
 - Concentrate
25. James has a farm where he keeps cattle. The animals are enclosed in a permanent structure where feeds and water are provided. The type of grazing he practices is
- Tethering
 - Zero grazing
 - Herding
 - Paddocking
26. Which one of the following is not a reason why animals should be given balanced diet?
- Proper growth
 - Maximum production of milk and meat
 - Proper production of blood when slaughtered
 - Protection against diseases
27. Which one of the following ways cannot prevent spreading of bilharzia?
- Wear gumboots when working in water
 - Kill water snails using chemicals
 - Drain stagnant water

29. Landslide is a form of

- Sheet erosion
- Rill erosion
- Splash erosion
- Gulley erosion

30. The type of tooth drawn is called



- Incisor
- Canine
- Premolar
- Molar

31. Which one of the following is not a sign of gum disease?

- bad breath
- Shedding of milk teeth
- Bleeding gums
- Red and swollen gums

32. Which one of the following food crops is **NOT** a cereal?

- Maize
- Wheat
- Beans
- Millet

33. A beverage is a liquid for drinking. Which one cannot be planted as a beverage crop?

- Coffee
- Cocoa
- Tea
- Coconut

D. Pass stool and urine in the bush

28. Diseases transmitted through water are called

- Water diseases
- Water borne diseases
- Deficiency diseases
- Communicable diseases

34. All the following are disadvantages of weeds **EXCEPT?**
- A. Provide food for crops
 - B. Compete with crops for food
 - C. May have pests that attack crops
 - D. May spoil farm produce
35. The best way of removing weeds is by doing all the following **EXCEPT?**
- A. Digging them out
 - B. Slashing
 - C. Using chemicals
 - D. Burying them in the soil

36. A child was found to be having the following signs and symptoms

- (i) Bow-like- legs
- (ii) Knocking knees
- (iii) Bones that broke easily

The child is **MOST LIKELY** to be suffering from?

- A. Marasmus
- B. Kwashiorkor
- C. Rickets
- D. Anaemia

37. The type of cloud drawn is common in fine weather..

It is **LIKELY** to be

- A. Nimbus
- B. Cumulus
- C. Stratus
- D. None of the above

38. Which one of the following is NOT correct about the moon?

- A. It is commonly seen at night
- B. It is sometimes seen during the day
- C. It causes lightning
- D. It appears in different shapes

39. Which animal is not correctly matched with the way of movement?

- | Animal | Movement |
|------------|----------|
| A. Bird | Flies |
| B. Frog | Leaps |
| C. Snake | Gliding |
| D. Ostrich | Running |

40. A lizard basks on a cold day in the sun. This action supports which characteristic of living things?

- A. Reacting to changes in the environment
- B. Feeding
- C. Removing waste
- D. Moving from one place to another

41. A young one of a sheep is called

- A. Kitten
- B. Kid
- C. Calf
- D. Lamb

42. One of the following does NOT give a recreational use of water

- A. Swimming
- B. Washing the body
- C. Boat racing
- D. Surfing

43. The organ that does NOT help to digest food in the mouth is

- A. Teeth
- B. Tongue

45. Which one of the following does not give a safe way of handling chemicals at home?

- A. Chemicals be stored away from children
- B. Chemicals be stored away from foods
- C. All chemical containers be well labeled
- D. Detergents be kept within the reach of children

46. One of the following cannot help in the spreading of HIV/AIDS

- A. Blood transfusion
- B. Mosquito and other insect bites
- C. Sexual intercourse
- D. Sharing skin-piercing tools

47. The above weather instrument has coloured water used

mpg Cellotape

Scale

Cork

Glass bottle

Coloured water

- A. to make it easy for reading
- B. To expand when heated
- C. To decorate the instrument
- D. To prevent air from entering

48. Which one of the following animal is not a mammal?

- A. Shark
- B. Whale
- C. Spiny ant-eater
- D. Duck-billed platypus

49. A child has the following signs and symptoms

- (i) Brownish and thin hair
- (ii) Sores at the corners of the mouth
- (iii) Swollen stomach, arms and feet
- (iv) Very weak body

The child was likely suffering from

- A. Rickets
- B. marasmus
- C. Kwashiorkor
- D. Anaemia

50.

 Papers

 Flam

- C. Gullet
- D. Salivary glands

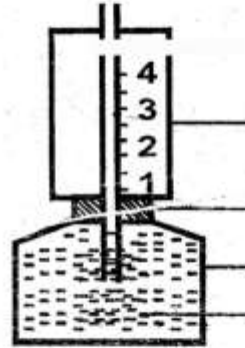
aw®

44. The amount of medicine to be taken at a time by a patient is known as
- A. Dosage
 - B. Prescription
 - C. Medicinal quantity
 - D. Overdose



Prewood

- During a Science practical lesson, pieces of paper were dropped as shown on fire. It was observed that they did not reach the fire because of
- A. Conduction
 - B. Convection
 - C. Radiation
 - D. None of the above



Science 6