

1. Which one of the following clouds are found high in the sky and have a flat base?
 - A. Nimbus
 - B. Cumulus
 - C. Stratus
 - D. Cirrus
2. Draining stagnant water can help prevent the spread of:
 - A. typhoid and malaria
 - B. cholera and bilharzia
 - C. typhoid and cholera
 - D. bilharzia
3. Convection is a mode of heat transfer in:
 - A. liquids only
 - B. gases only
 - C. liquids and solids
 - D. liquids and gases
4. Which of the following is a social effect of drug abuse?
 - A. Drug induced accidents
 - B. Withdrawal
 - C. Addiction
 - D. Memory less
5. The component of blood that helps in clotting is:
 - A. plasma
 - B. platelets
 - C. red blood cells
 - D. white blood cells
6. The type of animal feed grown, cut and fed to animals is known as
 - A. pasture
 - B. concentrator
 - C. iodine
 - D. pasture

7. Which of the following is not a source of current electricity?
 - A. Windmills
 - B. Car battery
 - C. Geothermal wells
 - D. Water dams
8. The processes involved in changing ice to vapour are:
 - A. melting and condensation
 - B. evaporation and condensation
 - C. freezing and evaporation
 - D. melting and evaporation
9. Rays of Light appear bend when they move from the transparent medium to another due to
 - A. bouncing
 - B. dispersion
 - C. refraction
 - D. splitting
10. The component of air used in photosynthesis is also used in:
 - A. germination
 - B. fire extinguisher
 - C. light bulbs
 - D. making proteins
11. Which of the following is a biotic component of the environment?
 - A. Air
 - B. Plants
 - C. Soil
 - D. Water
12. Children who suffer from 'Kwashiorkor' and 'anaemia' lack of and respectively.
 - A. iron and proteins

- 8 calcium and iron
- C. proteins and iron
- D. enough food and iron

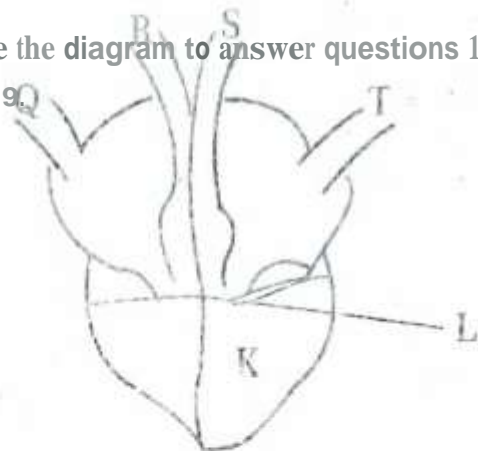
13. The pistil of a flower consist of
- petals, stigma, style and ovary
 - style, stigma, ovary and ovules
 - filament, pollen grains and anthers
 - sepals, petals, style and ovary

14. Plants depend of eachother following except?
- Food
 - Support
 - Shade
 - Habitat

15. Which of the following crop pests cuts the stems of young plants?
- Cutworms
 - Stalk borer
 - Apiids
 - Termites

16. Which of the following methods of controlling animal parasites can be used (or both ticks and liver flukes)?
- Deworming
 - Spraying
 - Rotational grazing
 - Dipping

Use the diagram to answer questions 17 to 19.



17. The two vessels that carry bright red blood are labeled?

A. Q, R

B. O, T

C. S, T

D. R, S

18. The features marked L are useful because they
- allow backflow of blood
 - help in blood clotting
 - help in pumping of blood
 - prevent blood from flowing backwards

19. The chamber marked K has thick muscle wall mainly because:
- it receives a lot of blood
 - it pumps blood to all parts of the body
 - it receives deoxygenated blood
 - it pumps oxygenated blood

20. Which of the following drugs is prohibited in Kenya?

A. Bhang

B. Alcohol

C. Miraa

D. Tobacco

21. Which method of preserving food will keep fish fresh for a long time?

A. Salting

B. Freezing

C. Drying

D. Smoking

22. The soil that cracks when dry also:

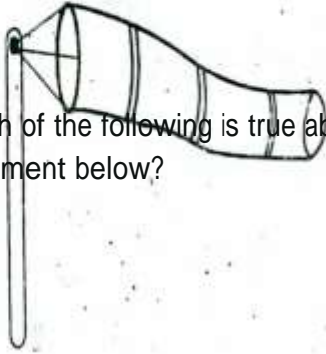
A. has large air spaces

B. is sticky when wet

C. is good for farming

D. has a good drainage

23. Which of the following is true about the instrument below?



- A. It is used to tell the speed of wind
- B. It points where the wind is blowing
- C. It has two open ends
- D. It should be kept under shade

24. Which of the following shows using water sparingly?

- A. Harvesting rain water
- B. Using sprinkler irrigation
- C. Repairing leaking pipes and tanks
- D. Using water that has been used to wash clothes to mop the floor

25. Which of the following is a myth about HIV/AIDS?

- A. AIDS has a cure.
- B. HIV/AIDS is spread through sexual intercourse
- C. HIV/AIDS patients are always thin
- D. HIV/AIDS can affect anyone

26. All the following are major nutrients required by plants except?

- A. Manganese
- B. Phosphorus
- C. Nitrogen
- D. Potassium

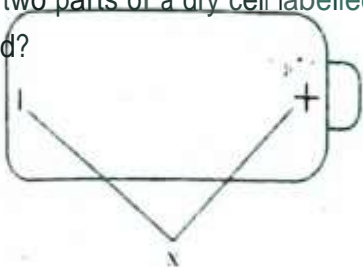
27. The most abundant component of blood is:

- A. platelets
- B. plasma
- C. red blood cells
- D. white blood cells



28. Which of the following groups of crops are fibre crops?
- A. Beans, Peas, Maize
 - B. Cotton, sisal, flax
 - C. Potatoes, Cassava, Carrots
 - D. Maize, wheat, rice
29. Which one of the following is not found in tobacco smoke?
- A. Caffeine
 - B. Nicotine
 - C. Tar
 - D. Carbon monoxide
30. Which of the following cannot be measured using a spring balance?
- A. Weight
 - B. Friction
 - C Magnetism
 - D. Mass
31. The following small animals belong to the same group except?
- A. Flea
 - B Mite
 - C. Spider
 - D Tick
32. All the following are characteristics of an insect pollinated flower except?
- A. Have scent
 - B. Produce nectar
 - C. Feathery stigma
 - D. Brightly coloured petals

33. The two parts of a dry cell labelled x are called?



- A. Poles
- B. Terminals
- C. Circuits
- D. Enos

34. The following are physical changes in both boys and girls during adolescent except

- A. Production of sex cells
- B. Broadening of hips
- C. Pimples may appear
- D. Growth of pubic hair

35. In female, menstruation is

h30pens. n .e

- A. aperiodic
- B. cyclic

C. uterine

D. venous

36. The primary function of the

- A. pulmonary artery
- E. aorta

C. venous

37. Which one of the following has definite volume and mass only?

- A. Water
- B. Vapour
- C. Ice
- D. Steam

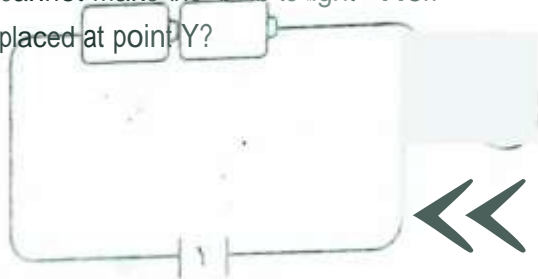
38. Which of the following materials is opaque?

- A. Kerosene
- B. Windscreen
- C. Mirror
- D. Frosted glass

39. The type of soil erosion that occurs on animal paths is:

- A. rill erosion
- B. sheet erosion
- C. splash erosion
- D. gulley erosion

40. The diagram below represents a simple circuit. Which of the following materials cannot make the bulb to light when placed at point Y?



- A. Copper
- B. Razor blade
- C. Graphite
- D. Glass

41. Which of the following stores food in the stem?

- A. Cassava
- B. Irish potato
- C. Carrot
- D. Arrow root

- A. CA1
- D. Vapour

42 The
gas
!ha' is
used by
iepure
s to
make
proteins 's
30Lr00imat
I,
7
800
C 1%
0097%

43. Which of the following is not a **water** pollutant?

- A. Raw sewage
- B. Acid rain
- C. Oil spills
- D. Tobacco smoking

44. Which of the following is not a special sound?

- A. Car hooting
- B. Fire siren
- C. Baby crying
- D. Bell ringing

45. All the following are characteristics of amphibians except?

- A. Have external fertilization
- B. Have a backbone
- C. Have scales on their bodies
- D. Lay eggs

46. Which of the following is correctly matched with their products?

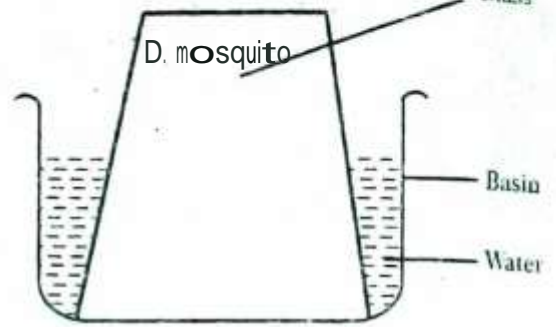
- A. Sheep - mutton and mohair
- B. Cow - beef and mohair
- C. Goat - mutton and mohair
- D. Poultry - egg and wool

47. Which of the following can be attracted by a magnet?

- A. Plasmodium
- B. Aluminum rod
- C. iron nails
- D. Cobalt filings

48. Malaria is a communicable disease caused by:

- A. plasmodium
- B. female anopheles
- C. stagnant water



A. air bubbles produce

B. water is thicker

C. mosquitoes are small

D. mosquitoes are floating

49. The most common method of controlling weeds is

A. spraying with herbicides

B. ploughing with herbicides

C. weeding

D. burning

49. The water did not enter the glass because:

- A. air exerts pressure
- B. water is heavier
- C. air occupies space
- D. air expands on heating

50. The best method of controlling weeds is.

- A. digging them out
- B. spraying with herbicides
- C. uprooting them
- D. burning them