

FRONTRUNNER EXAM

STANDARD EIGHT 2021

SCIENCE

(8)

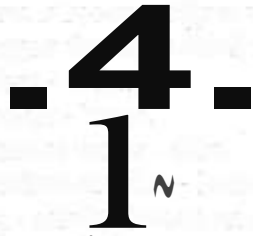
FRONTRUNNER 007

Time: 1 Hour 40 Minutes

- Which one of the following excretory products is **incorrectly** matched with the body organ through which it is excreted?
 - Urea - kidney.
 - Sweat - lungs.
 - Excess water- skin.
 - Carbon dioxide - lungs.
- During a science lesson on miscibility in liquids, standard seven pupils carried out an experiment and made the following observations: Liquid **P** mixed with liquid **Q** but did not mix with liquid **R**. Liquid **S** mixed with liquid **R** but did not mix with liquid **Q**.
Which one of the following would be the likely names of liquids **Q**, **R**, **S** and **P** respectively?
 - Ink, water, milk, cooking oil
 - Milk, ink, petrol, kerosene
 - Engine oil, water, milk, petrol
 - Kerosene, cooking oil, water, milk
- Standard five pupils were told to name the parts of the alimentary canal. Which group gave the **correct** answer?
 - Group **B**: Small intestine, liver, stomach.
 - Group **A**: Large intestine, mouth, pancreas.
 - Group **D**: Rectum, duodenum, gall bladder.
 - Group **C**: Ileum, oesophagus, large intestine.
- The following are ways of educating masses as a control measure for HIV/ AIDS. Which one is **not**?
 - Newspapers
 - Public rallies
 - Workshops
 - Seminars.
- Which one of the following vaccines is administered in infants at the age of 6th, 10th and 14th week?
 - Anti-polio and BCG.
 - BCG and anti-measles.
 - Anti-measles and DPT.
 - DPT and anti-polio.
- A flower whose stigma is inside the flower is **not** likely to
 - have a sweet scent
 - be large in size



- C. have feathery stigma
 D. produce few pollen grains.
7. The diagram below shows a weather measuring instrument.



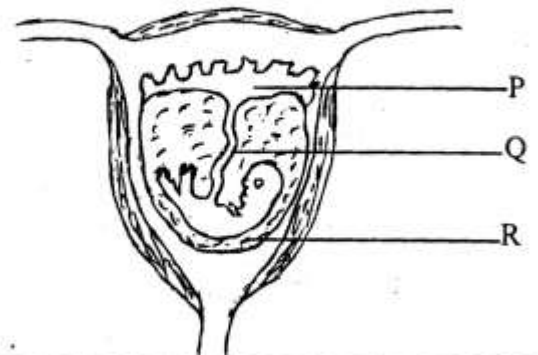
Which statement below is **not true** about the above weather instrument?

- A. The tail-end should be made heavier than the arrowhead.
 B. It is used to measure the strength and direction of wind.
 C. The arrowhead shows the

Science Std. 8 007

- direction from which the wind is blowing.
 D. It works under the principle of air in motion.

8. Which one of the following factors determines the roughness or smoothness of a soil type?
 A. The water retention ability of the soil.
 B. The colour of the soil type.
 C. The amount of water in the soil.
 D. The size of the soil particles.
9. Which one of the following is **not** a benefit of using inorganic manure?
 A. It is needed in small quantities.
 B. It is easily absorbed by plants.
 C. It does not pollute the soil.
 D. It supplies specific plant nutrients.
10. The diagram below shows the development of foetus in the human body.



Name the parts marked P, Q, R.

	R	Q	P
A.	Placenta	Umbilical cord	Amniotic fluid
B.	Amniotic fluid	Umbilical cord	Placenta
C.	Umbilical cord	Amniotic sac	Foetus
D.	Amniotic sac	Placenta	Amniotic fluid

11. Cedar, moss and grass have one thing in

common. It is that

- A. they are non-flowering plants
- B. they are non-green plants
- C. they are green plants
- D. they are towering plants.

12. Standard five pupils carried an experiment to find out the rate at which water drains in different soils. Which one of

the following materials is not necessary to bring to class?

- A. Identical tubes.
- B. Identical funnels.
- C. Equal amount of cotton wool.
- D. Equal amount of different soil.

13. The following are the stages of germination in a bean seed but not in their correct order.

- (i) The seeds swell up and burst open.
- (ii) The radicle emerges
- (iii) The seeds absorb water.
- (iv) The plumule emerges

Which one of the following shows the correct order of the above stages?

- A. (i), (ii), (iii), (iv)
- B. (iii), (i), (ii), (iv)
- C. (iv), (iii), (ii), (i)
- D. (ii), (iii), (i), (iv)

14. 16.

15.

- C. The clouds that are found high in the sky indicate fair weather.
- D. The clouds that are dark appear like huge mountains.

17. Which one of the following types of foods are not correctly matched to their group?

- A. Milk, green grams - proteins.
- B. Arrowroots, cassava - carbohydrates.
- C. Grapes, water melon - vitamins.
- D. Groundnuts, cashewnuts - carbohydrates.

18. Which one of the following is not a sign of ill health in livestock?

- A. Rough skin coat.
- B. Increased appetite.
- C. Loss of weight.
- D. Stunted growth.

19. The diagram below shows the planets in the



Which one of the following shows the correct order of the named planets from the smallest to the largest?

- A. D, E, F, G
- B. F, G, D, E
- C. E, G, D, F
- D. E, D, G, F

20. Scholar, a standard four pupil, filled a polythene paper with water. She used a pin to make holes at different parts of the paper. Which one of the following was she likely to be investigating? Pressure in liquids

- A. Silage and hay
- B. Fodder and pastures
- C. Pastures and concentrates
- D. Concentrates and fodder.

The following statements are true about the different types of clouds. Which one is **not** true?
A. The clouds that bring rain appear low in the sky.
B. The clouds that bring about fair weather are dark and mountaneous.

Which one can farmers apply during the rainy season?
A. Recycling
C. Harvesting
D. Reusing
The following statements

- is equal in all directions
 - increases as the depth increases
 - C. is equal at the same depth
 - D. increases with an increase in height.
21. Which one of the following pollutants of water **mainly** leads to the spread of waterborne diseases?
A. Oil spills. B. Farm chemicals.
C. Domestic waste. D. Acid rain.
22. Tush used the following process in separating a certain mixture:

Use of a magnet — dissolving — filtering — evaporating

- Which one of the following mixtures was he **likely** to be separating?
A. Pieces of copper metal, salt and sand.
B. Sand, sugar and iron fillings.
C. Sugar, wheat flour, sand.
D. Beans, chaff, iron fillings.

23. Which one of the following **correctly** shows the uses of the second largest and the smallest components of air **respectively**?
- Making food in legumes and preserving soft drinks.
 - Breathing and making plant food.
 - Germination of seeds and putting out fire.
 - Burning and making fluorescent tubes.
24. The diagram below shows a simple lever.

Which one of the following statements is **true** about the above lever when in use?

- It belongs to the same class as a claw hammer.
- The position of the load is between the fulcrum and the effort.
- It belongs to the first class of levers.
- The position of the effort is

'ice: i - \$krr and the load.
The following are effects of water pollution:

• eep

- eath of aquatic life

- respiratory diseases
- rusting of iron, etc.

26. snug fo

- Galley erosion. +. Sp h
 - C. RR }ercio. *Sheets+esion
- Which one of the following activities **do not** need the force that acts in the opposite direction to the applied force?

- Riding. Swinmi
- Braking. D Waling.

28. Which one of the following adaptations

survival are not true in sisal and rice plants?
Sisal: i s

- Shark and bat.
- Toad and spiny ant-eater.

30.

~!~a~!a;:r~m below — beak of a



Which one of the following pair of birds have the type of beak shown above?

- Kiwi and hawk.
- Flamingo and duck.
- Hen and parrot.
- Kite and seagull.

31. The following are nutritional deficiency diseases. Which one is caused by lack of calcium and phosphorus in the diet?

- Rickets
- Anaemia
- Marasmus
- Kwashiorkor.

Which one of the following consists of the biological part of the environment?

- Light and locusts.
- Ants and sweet potatoes.
- Buildings and heat.
- Soil and sodom apple.

The diagram below shows three different



objects that were weighed by standard six

one of the following conclusions
<in pupae are?

- Load Q is twice as heavy as load S
- The mass of load Q is twice that of 'oa

34. During a Science lesson, different groups of pupils mixed small pieces of different metals

- A. Has sunken stomata
- B. Has long deep roots
- C. Has silvery hairs
- D. Has a flexible stem



- 29. Which one of the following animals have a varied body temperature but have no scales?
 - A. Frog and lizard.
 - B. Newt and salamander.

Science Std. 8 007

as shown below.

- Group A: Steel and silver
- Group B: Aluminium and nickel
- Group C: Alnico and cobalt
- Group D: Iron and copper

Which of the above groups could not use a magnet to separate their mixture?

- A. Group C
- B. Group D
- C. Group A
- D. Group B

- 35. Which one of the following effects of HIV/AIDS is correctly grouped?
 - Effects on an Effects on Effects on

25.

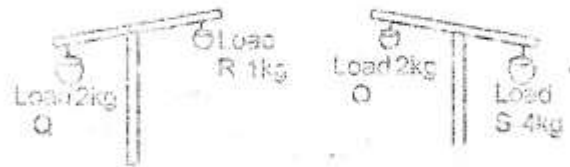
spread of waterborne diseases.
 of the following types of soil erosion, which one is characterised by formation of shallow channels on the ground?

27.

Has many

32.

33.



- Which of the following is correct?
- A. The...
 - B. The...
 - C. The...

- A. Loss of self esteem
 B. Emotional weakness
 C. School drop out
 D. Making one unproductive
- Lack of parental care
 Poor health care
 Many deaths
 Physical weakness
- Poor health care
 Decrease in agricultural production
 Low economic production
 Increase in number of orphans



36. The diagram below shows a monocot seed.

The parts marked T, S, U respectively are
 A. Style, scar, endosperm, cotyledon
 B. Cotyledon, radicle, endosperm
 C. Endosperm, radicle, cotyledon
 D. Endosperm, cotyledon, radicle

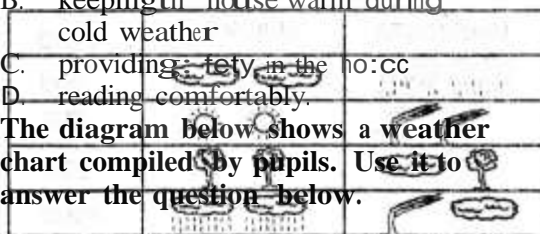
37. Which one of the following is a way of controlling internal livestock parasites?

- A. Dipping. B. Spraying.
 C. Dosing. D. Dusting.

38. The following statements describe the uses of light energy. **Except**

- A. keeping away pests in the house
 B. keeping the house warm during cold weather
 C. providing light in the classroom
 D. reading comfortably.

The diagram below shows a weather chart compiled by pupils. Use it to answer the question below.



39. Which one of the following statements is false?
 A. Monday morning had the most favourable weather for drying clothes.

A. Convection in liquids. B. Convection in gases.

C. Conduction in gases. D. Radiation in air.
 41. Which one of the following ways of maintaining simple tools is **not** applicable to all the tools?

- A. Cleaning after use.
 B. Using the tool for the right work.
 C. Repairing broken handles.
 D. Proper storage of the tools.
 42. The following are properties of light energy.

Which one of them leads to the formation of a spectrum?

- A. Refraction. B. Reflection.
 C. Bending. D. Dispersion.

43. Which one of the following materials is correctly grouped?

- A. Dirty water - Translucent material.
 B. Mirror - Opaque material.
 C. Dirty water - Translucent material.
 D. Iron sheet - Transparent material.

44. A standard seven science teacher came to class with a candle, a bent pipe, a matchbox and a straight pipe. Which one of the following was he **likely** to teach about?
 A. Light travels in all directions from the

source.

5. Light bends as it hits a shiny smooth surface
 C. Light travels in straight lines from the source.
 D. Light bends as it moves from one medium to another.

45. Noise refers to loud, unpleasant sound. Which one of the following is **not** caused by noise pollution?

- A. Deafness. B. Dumbness.
 C. Discomfort. D. Irritation.

46. Static electricity is produced when

- A. surfaces are rubbed
 B. turbines are used to drive generators
 C. underground hot springs are used to give electricity
 D. dry cells are connected in series.

47. Which one of the following foods can **best** be preserved by refrigeration?

- A. Mutton and beans B. Bacon and honey
 B. Mutton and beans
 C. Mutton and beans
 D. Mutton and beans

O
 n
 T

- C. Pupils flew kites on Tuesday afternoon.
D. On Wednesday farmers could not winnow their grains.
40. Esther cut a paper into small pieces. She then dropped them towards burning fire and realised that they did not fall on the fire but moved away from the fire. Which one of the following aspects was she investigating?
- C. Milk and pork
D. Vegetables and maize grains.
48. Which one of the following factors affecting floating and sinking makes wooden materials to float on water?
A. Shape B. Size C. Density D. Material
49. Among the following substances, which one of them have indefinite volume?
A. Carbon dioxide and milk.
B. Ice and kerosene.
C. Oxygen and nitrogen.
D. Stone and wood.
50. Which one of the following materials is an insulator?
A. Carbon B. Glass C. Silver D. Tin.