



THE FINAL CURVE

K.C.P.E TRIAL -2020

-SOCIAL STUDIES AND RELIGIOUS EDUCATION

Time: 2 hours 15 minutes

READ THESE INSTRUCTIONS CAREFULLY

1. You have been given this question booklet and a separate answer sheet. The question booklet contains 50 questions.
2. Do any necessary rough work in this booklet.
3. When you have chosen your answer mark it on the **ANSWER SHEET**, not in the question paper.

HOW TO USE THE ANSWER SHEET.

4. Use an ordinary pencil only.
5. Make sure that you have written on the answer sheet
YOUR INDEX NUMBER
YOUR NAME
NAME OF YOUR SCHOOL
6. By drawing a **dark** line inside the correct numbered boxes mark your full Index Number (i.e. School Code Number and the Candidate's Number) in the grid near the top of the answer sheet.
7. Do not make any marks outside the boxes.
8. Keep your answer sheet as clean as possible and **DO NOT FOLD IT**.
9. For each of the questions 1-50 four answers are given. The answers are lettered A, B, C, D. In each case only **ONE** of the four answers is correct. Choose the correct answer.
10. On the answer sheet show the correct answer by drawing a **dark line** inside the box in which the letter you have chosen is written.

Example

In the Question Booklet:

45. Planting and taking care of trees is known as **B**

A. re - afforestation

B. deforestation

C. forestry

B. afforestation.

44. [A] [B]

D

B]

The correct answer is C.

On the Answer sheet:

i e | i t

i | i n p l t i e E l t r c o

In the set of boxes number 45, the box with letter **D** printed in it is marked.

11. Your dark line **MUST BE** within the box.

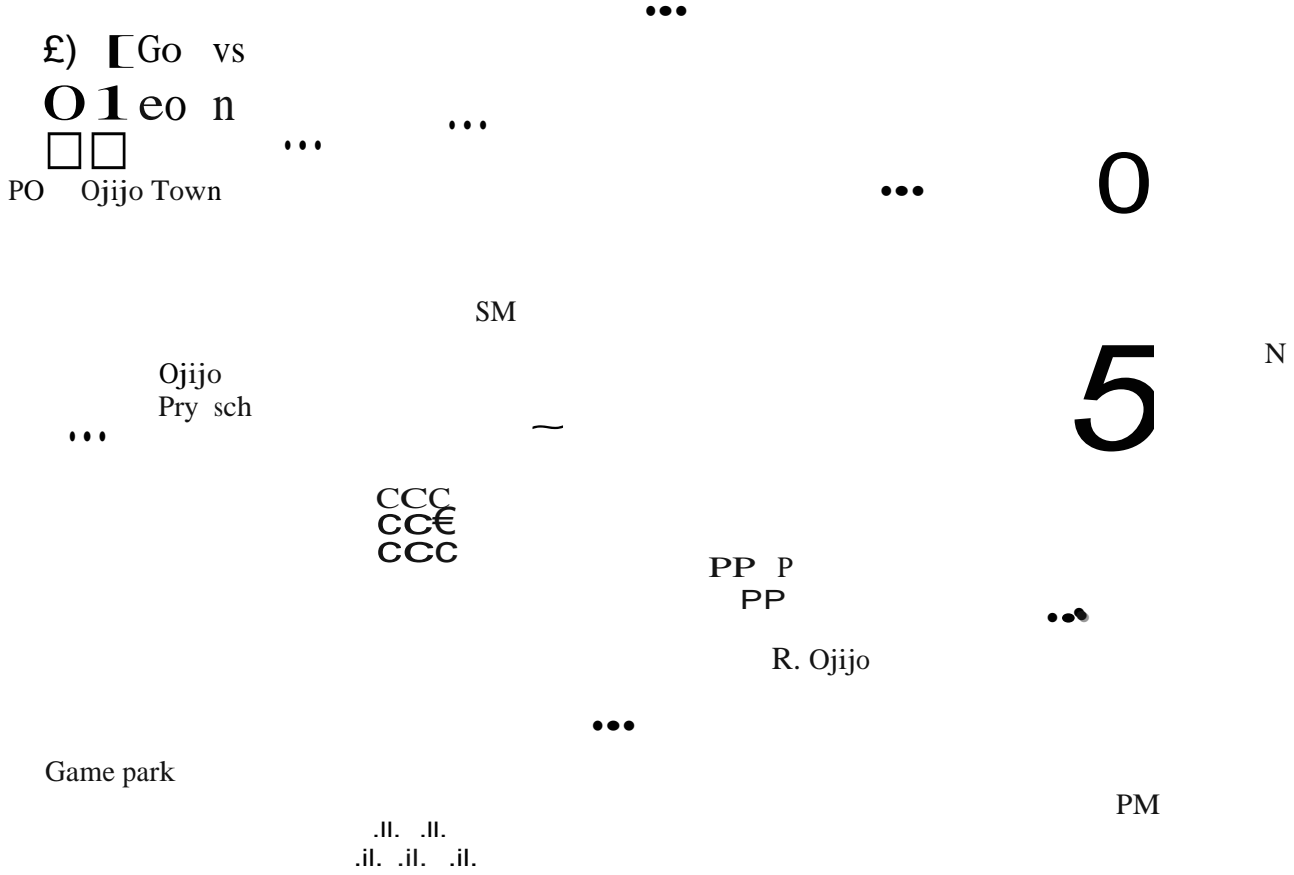
12. For each question **ONLY ONE** box is to be marked in each set of four boxes.

This question paper consists of 12 printed pages.

TURNOVER

PART I: SOCIAL STUDIES

OJJOARE A



Scale



- Railway line
- Houses
- Saw mill
- Scrub
- Police station
- Hospital
- Natural forest
- Airport
- County Offices
- Abandoned quarry
- Governor's Office
- Tarmac road
- Church
- Factory
- Posho mill
- Pyrethrum
- Post Office

5

Mosque

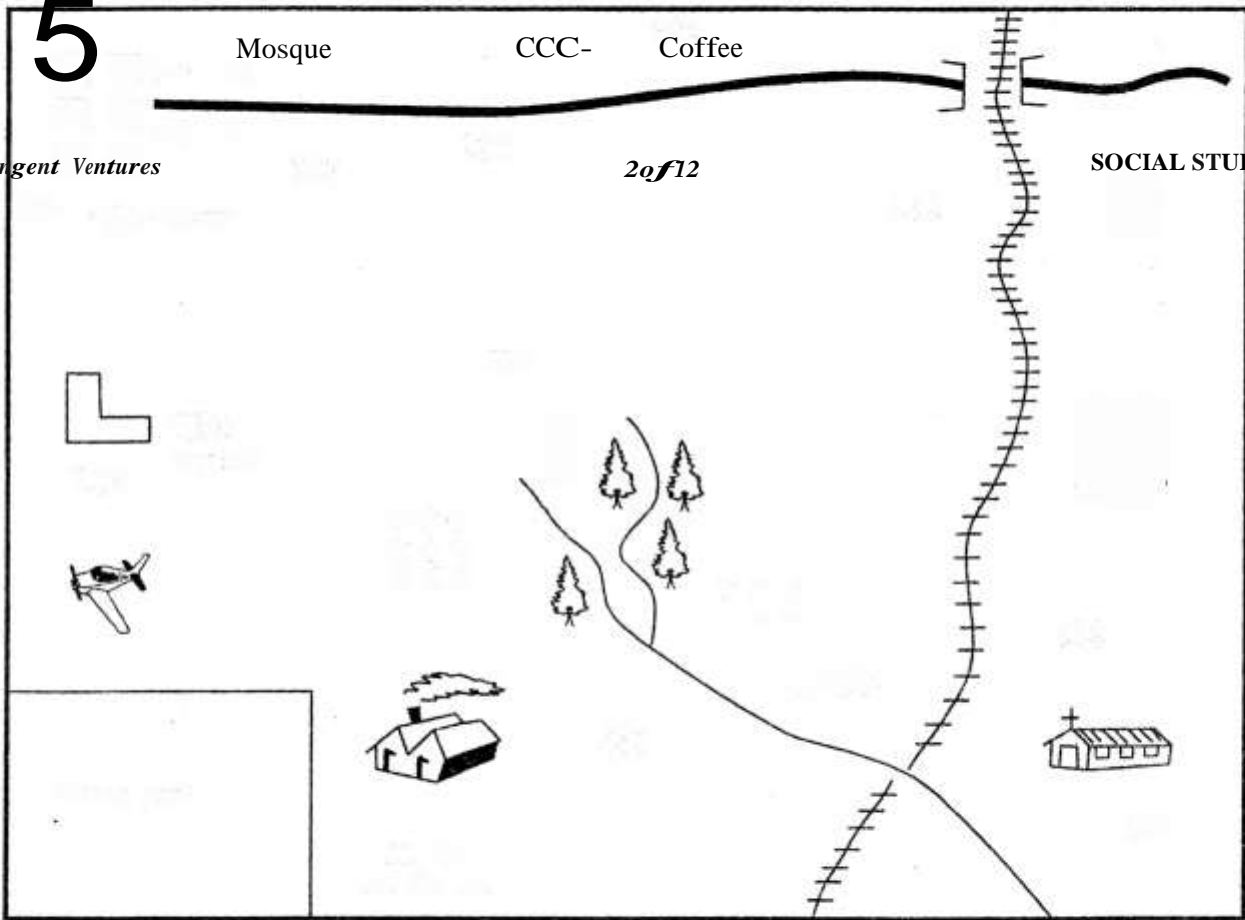
CCC-

Coffee

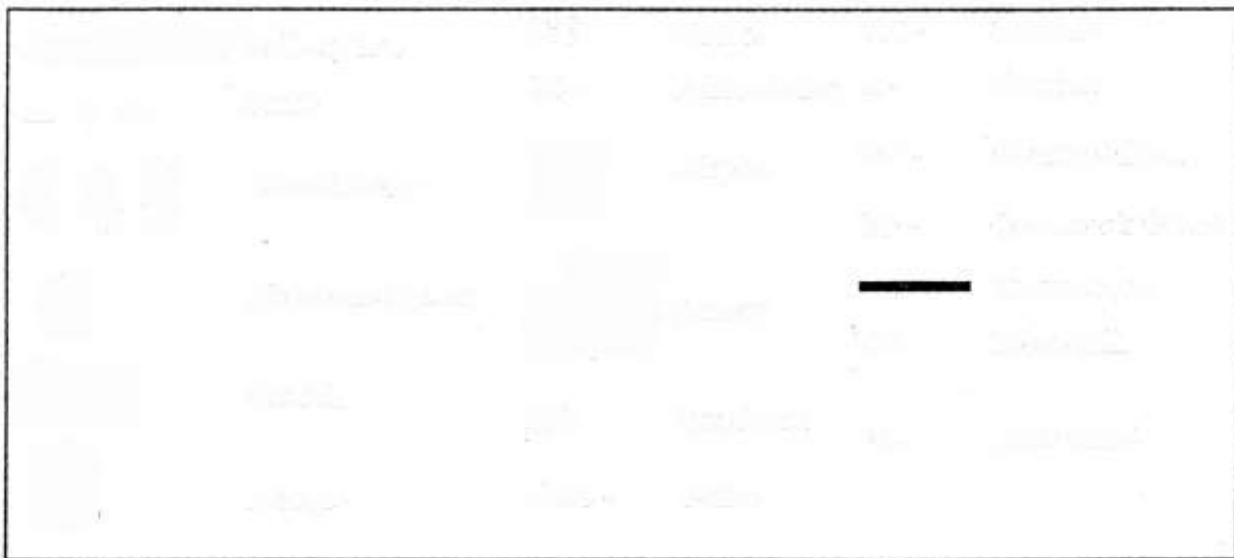
Tangent Ventures

2 of 12

SOCIAL STUDIES/RE



KEY



- B. nucleated
- C. linear
- D. dense

*Study the **MAP** of Ojijo Area and answer questions 1 to 7*

1. What is the direction of the church from the post office in Ojijo Area?
 - A. North West
 - B. South East
 - C. South West
 - D. North East

2. Which factor among the following has contributed to the location of the factory at its present location in Ojijo Area?
 - A. The government policy
 - B. Availability of hydro-electric power
 - C. Availability of cheap labour from the nearby villages
 - D. Availability of the raw materials

3. The two **main** religions in Ojijo Area are
 - A. Sikhism and Traditional religion
 - B. Islam and Christianity
 - C. Hinduism and Christianity
 - D. Islam and Sikhism

4. Which group of trees among the following cannot be found in the natural forest at Ojijo Area?
 - A. Cypress and Pine
 - B. Obeche and Meru oak
 - C. Mahogany and Elgon Teak
 - D. Mahogany and Meru oak

5. Which economic activity is **not** carried out in Ojijo Area?
 - A. Mining
 - B. Lumbering
 - C. Farming
 - D. Tourism

6. Which statement among the following is untrue about Ojijo Area?
 - A. Ojijo Area is headed by a governor
 - B. Ojijo Area is likely to be found in the highlands
 - C. Ojijo Area receives high convectional rainfall
 - D. The factory in Ojijo Area processes coffee berries

7. The settlement pattern in Ojijo Area is **likely** to be
 - A. sparse

8
.
W
h
i
c
h
o
f
t
h
e
f
o
l
l
o
w
i
n
g
s
h
o
w
s
t
h
e

- easons?
- A. Spring ->Summer ->> Autumn
Winter
 - B. Summer— Winter »> Spring-
» Autumn
 - C. Spring -> Autumn — Winter >
Summer
 - D. Summer -> Spring->> Winter »>
Autumn
9. The tops of Mount Kenya and Mount Kilimanjaro have no vegetation cover **mainly** because
- A. of the high temperatures
 - B. the soils are very poor
 - C. the temperatures are too low to support vegetation growth
 - D. the ground has a rocky surface
10. Which group among the following contains areas that experience desert climate only?
- A. Nubian region in Sudan
Ogaden in Ethiopia
Taru in South Kenya
Large parts of Somalia
 - B. Lonan swamp in Kenya
Lake Victoria basin
Blue Nile in Ethiopia
Shores of Lake Kyoga
 - C. Southern Sudan
Northern parts of Uganda
Kakamega in Kenya
Slopes of Mount Kenya
 - D. Ogaden in Ethiopia
Chalbi in Kenya
Large parts of Ethiopia
Slopes of Mount Kilimanjaro
11. Which of the following water bodies does **not** border the continent of Africa?
- A. Indian ocean
 - B. Pacific ocean
 - C. Mediterranean sea
 - D. Atlantic ocean

[Faint, illegible text on the left side of the page, possibly bleed-through from the reverse side.]

[Faint, illegible text on the right side of the page, possibly bleed-through from the reverse side.]

[Faint, illegible text inside the first rectangular box.]

[Faint, illegible text inside the second rectangular box.]

[Faint, illegible text inside the third rectangular box.]

[Faint, illegible text inside the fourth rectangular box.]

[Faint, illegible text on the right side of the page, below the boxes.]

12. The diagram below shows the formation of a certain type of lake on



Mountain

The lake was formed through the process

- of
- A. down warping
 - B. deposition
 - C. glacial erosion
 - D. faulting

13. The following are economic uses of soil **except**

- A. clay soil is used in making household utensils
- B. sand soil is used in building and construction
- C. soils provide physical support for

plants

- D. soils are used to bury the dead

14. All the following were benefits of the interaction among communities in Africa, during the pre-colonial period **except**

- A. the Bantus learnt initiation by circumcision and age-set systems from the Cushites
- B. the Bantus learnt cattle keeping from the Cushites and Nilotes
- C. cattle raids brought deaths and misery among communities
- D. the exchange of names between the Luo and the Luhya people

15. Which group among the following does not contain ox-bow lakes only?

- A. Lake Kanyaboli, Lake Gambi, Lake Bilisa
- B. Lake Utange, Lake Manzala, Lake Bilisa
- C. Lake Kariba, Lake Kainji, Lake Utange
- D. Lake Shakababo, Lake Gambi, Lake Manzala

17. The solstices occur

- A. June 21 and December 22
- B. March 3 and June 21°
- C. March 21" and 22 September
- D. December 22" and July 21"

18. The following are aspects of our culture

(i) *practising polygamy*
 (ii) *use of traditional foods such as cassavas*

(iii) *wife inheritance*
 (iv) *elders settling conflicts*
 (v) *boys inheriting family property*

Which two aspects our culture should be preserved?

- A. i and v
- B. i and ii
- C. i and iii
- D. ii and iii

19. Which one of the following is **not** a soil

conservation method?

- A. Mulching
- B. Construction of gabions
- C. Farming on steep slopes
- D. Contour ploughing

20. A clan is

- A. a group of people who are related by blood
- B. a group of people who share a common ancestor
- C. a group of people who are related by marriage
- D. a group of people who are related through adoption

21. The following are factors that favour the growth of a certain crop in Kenya

(i) *well-drained fertile soils*
 (ii) *moderate rainfall during the growing period*
 (iii) *cool temperatures are ideal*
 (iv) *dry sunny period during the*

16. The following are functions of a certain

town

- (i) *It is a major tourist centre*
- (ii) *It is a sea port*
- (iii) *It is a gate way to East Africa*
- (iv) *It hosts the county headquarters*

The town described above is

- A. Malindi
- B. Mombasa
- C. Moyale
- D. Kisumu

Tangent VTures

ripening and harvesting period
(v) *gentle slopes to facilitate use of*

machines during harvesting

The factors described above favour the growth of which crop among the following?

- A. Wheat
- B. Tea
- C. Coffee
- D. Cotton

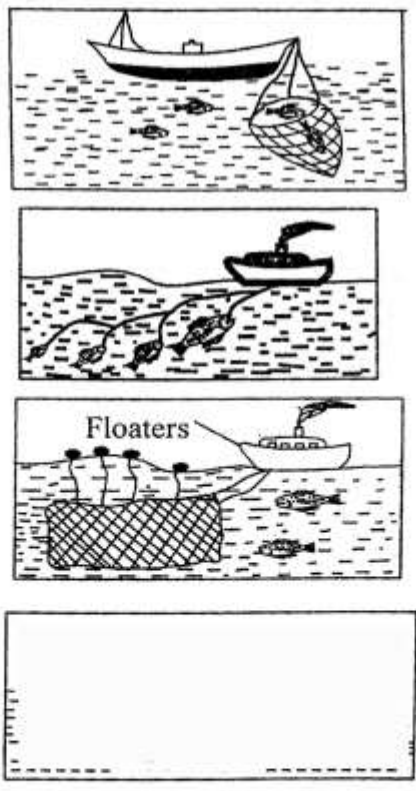
22. The following is a description of a certain type of vegetation
 (i) tall, evergreen trees
 (ii) trees have straight trunks and buttress roots
 (iii) trees grow close together
 (iv) forest has very little undergrowth
 Which vegetation type is described above?
 A. Mediterranean vegetation
 B. Tropical rainforest
 C. Equatorial vegetation
 D. Savannah vegetation
23. Which type of soil is found on the lower valleys of rivers?
 A. Sandy soil
 B. Loam soil
 C. Alluvial soil
 D. Clay soil
24. The following is a description of a certain mountain in Africa
 (i) It is snow-capped
 (ii) It is near the boundary of two countries
 (iii) It is of volcanic origin
 The mountain described above is
 A. Mount Elgon
 B. Mount Kilimanjaro
 C. Mount Kenya
 D. Mount Ruwenzori
25. Which method of fishing is known as long lining among the following?
 A.
 B.
 C.
26. The following are uses of a certain mineral
 (i) used in flavouring food
 (ii) used in food preservation
 (iii) used in making animal feeds
 (iv) used in the manufacture of paper
 (v) used in the manufacture of dye-stuff
 (vi) used in the manufacture of soap, chemicals, glass and drugs
 The mineral is likely to be
 A. soda ash
 B. salt
 C. gemstones
 D. limestone
27. Three of the following are problems resulting from the construction of the Aswan High Dam in Egypt **except**
 A. production of hydro-electric power
 B. stagnant water in the irrigated areas has caused waterborne diseases such as Bilharzia and Malaria which affect many people
 C. silt is deposited in the dam leading to the loss of the fertile soils down-stream
 D. people who lived along the Nile valley, were displaced as Lake Nasser was being constructed
28. Which group of communities among the following contains the Southern Cushites living in Tanzania only?
 A. Mbungu, Sandawe, Hawa
 B. Sanye, Crabra, Oromo
 C. Somali, [raqw, Sandawe
 D. Dahalo, Rendile, Aramanik
29. Which of the following is **not** true about an age-set?
 A. It is made up of two or more age groups
 B. All members of an age-set were born at the same time
 C. Members of an age-set married at almost the same time
 D. The period of time it took to form an age-set varied from one community to another
30. Three of the following are problems facing Jua kali industries in Kenya **except**
 A. insecurity in the open air premises which makes the goods prone to theft
 B. lack of capital to expand the business

Is% sac~

----- 40Mx. rEEEEEEEE

Tangent Ventures

- C. competition from well established industries
- D. jua kali industries are a source of employment for many young *people* in Kenya



31. All the following are measures that the government is taking to conserve the wildlife **except**
- establishment of Kenya Wildlife Service to ensure the safety of animals
 - Educating the public on the importance of conserving wildlife
 - Translocating or moving some animals to other game parks to decongest the overpopulated ones
 - Building more jails to accommodate the arrested poachers
32. Three of the following are causes of road accidents in Kenya **except**
- lack of clear markings on the roads
 - poor state of roads
 - careless road users
 - tarmacked roads
33. Which one of the following is a way of caring for people with special needs in communication?
- Providing them with wheelchairs
 - Providing them with the white canes
 - Providing them with tactile books
 - Construction of ramps and lifts in tall buildings
34. One of the **main** advantage of television over radio is that
- it conveys information in many languages
 - it has many programmes
 - it has many channels
 - it transmits both audio and visual information
35. Which one of the following groups of communities found in West Africa is made up of West Atlantic speakers only?
- Soninke, Malinke, Kanuri
 - Zarma, Hausa, Andarawa
 - Fulani, Wolofs, Serer
 - Mossi, Dagomba, Mande
37. Which one of the following statements **best** explains why coffee is intercropped with bananas?
- To increase soil fertility
 - To protect coffee trees from strong winds
 - To increase the productivity of bananas
 - To utilize the land better
38. The **main** cause of the resistance by Koitalel against the British was
- to fight the British and welcome the Germans based in Tanganyika
 - to oppose the construction of the railway line through his territory
 - to win favour from the British
 - to provide the land to the colonialists
39. All the following were functions of the Njuri Ncheke during the pre-colonial period **except**
- to curse wrong doers
 - to bless the warriors
 - to preside over sacrifices and rituals
 - to look for wives for the warriors
40. The statements below describe a certain early visitor in East Africa
- He was the first missionary to arrive in East Africa in 1844*
 - He was a German sent by the Church Missionary Society (CMS)*
 - Together with Johannes Rebman they started a mission station at Rabai*
 - In one of his missions with Chief Kivoi, he became the first white man to see Mt. Kenya*
- The visitor described above is likely to be
- John Speke
 - Henry Morton Stanley
 - Vasco da Gama
 - Dr. Ludwig Krapf
41. Which group among the following contains countries that were colonised by Portugal?

36.	Which one of the following methods is
W	
h	
i	

used to improve the quality of local breeds of cattle?

- A. Tethering of animals
- B. Daily dipping of animals
- C. Cross breeding with exotic breeds
- D. Practising ranching

Tangent Ventures

6 of 12

A. Angola
Cape verde
Kenya
Somaliland

C. DRC Congo
Rwanda
Burundi
Togo

B. Cape verde
Mozambique
Sao Tome and
principe
Angola

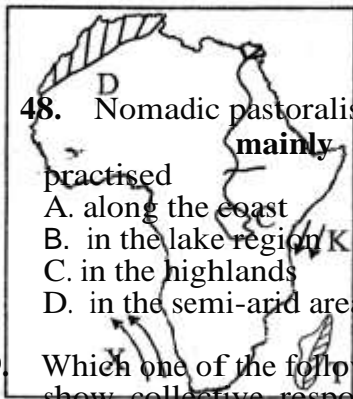
D. Togo
Kenya
Swaziland
Zanzibar

SOCIAL STUDIES/RE

Study the map below @d use it to answer questions 42 to 45.

- A. Fout Djallon - Guinea
- B. JebelAbyad- Sudan
- C. Tibesti - Central Africa Republic
- D. Teiga - Sudan

- 42. The vegetation zone marked **T** is
 - A. Desert vegetation
 - B. Equitorial vegetation
 - C. Temperate grassland
 - D. Mediterranean vegetation
- 43. The ocean currents marked **X** and **K** respectively are known as
 - A. Benguela cold currents, Somali warm currents
 - B. Mozambique cold currents, Somalia warm currents
 - C. Guinea currents, Somali currents
 - D. Canary currents, Guinea currents
- 44. The lake marked **C** was formed through the process of
 - A. folding
 - B. faulting
 - C. deposition
 - D. down warping
- 45. The mountains marked **D** are known as the
 - A. Usambara Mountains
 - B. Ruwenzori Mountains
 - C. Cape ranges
 - D. Atlas Mountains
- 46. Which one of the following is **not** an importance of national unity?
 - A. It promotes tribalism
 - B. It makes people appreciate one another
 - C. It promotes respect for human rights
 - D. It enables the government to serve its citizens well
- 47. Which plateau among the following is **wrongly** matched with the country where it is found?



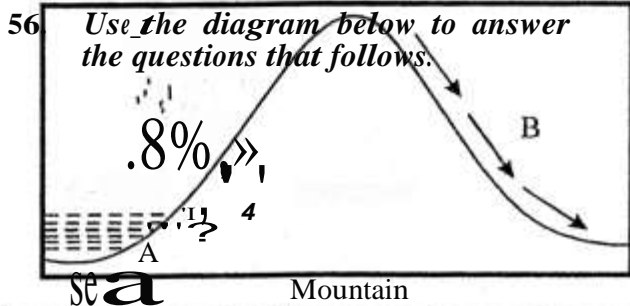
48. Nomadic pastoralism in Kenya is **mainly** practised
- A. along the coast
 - B. in the lake region
 - C. in the highlands
 - D. in the semi-arid areas
49. Which one of the following does not show collective responsibility of citizens?
- A. Taking part in the development of the country
 - B. Paying taxes when one feels like
 - C. Fighting corruption in the society
 - D. Taking part in community projects
50. Three of the following are forms of child abuse **except**
- A. social exploitation for example sexual abuse, early marriages and genital mutilation for girls
 - B. denying them food, clothing and shelter as their basic needs
 - C. forcing children to go to school
 - D. economic exploitation for example child labour
51. What is the time in Accra, Ghana when the time in Arusha, Tanzania on longitude

35E is 5.00 a.m?

- A. 07. 20 am
- B. 02. 40 am
- C. 03. 00 am
- D. 02.20 am

52. The process of restoring good relationship among warring communities is referred to as
- A. agreement
 - B. amendment
 - C. reconciliation
 - D. encouragement
53. Which one of the reasons **best** explains why the seven forks projects were established?
- A. To regulate the flow of River Tana
 - B. To settle the landless people
 - C. To generate hydro-electric power
 - D. To establish a fishing area
54. Three of the following are functions of the Supreme Court in Kenya **except**
- A. to hear appeals from the court of appeal
 - B. to hear and determine cases affecting presidential elections
 - C. to advise and give directions on disputes of constitutional interpretation
 - D. to hear appeals from the high court

55. All the following are national security organs in Kenya **except**
- A. the Kenya Defence Forces
 - B. the Administration Police
 - C. the National Police Service
 - D. the Judiciary



The type of rainfall shown above is likely to be experienced in the

- A. Lake basin
- B. High lands**
- C. Coastal region
- D. Lowlands

57. Which one of the following is **not** a characteristic of traditional farming?
- A. Planting and harvesting was communal
 - B. Yields were poor
 - C. Shifting cultivation was practised
 - D. Cash crops were mainly grown

58. The table shown below shows the amount of rainfall and temperature recorded in a certain weather station in Africa

Months	J	F	M	A	M	J	J	A	S	O	N	D
Rainfall	164	320	200	260	190	390	204	226	306	329	252	206
Temp	27	26	27	28	28	25	26	27	28	23	24	28

The station is likely to be found in which town among the following? A.

- A. Khartoum
- B. Arusha
- C. Capetown
- D. Younde

59. The following statements describe the Khoisan's way of life
- (i) They were herders
 - (ii) They were hunters and gatherers
 - (iii) They lived a nomadic lifestyle
 - (iv) Their government was by consensus
 - (v) They had a god called Kaggen
- Which of the above describes the social political and economic way of life of the San only?
- A. i and ii only
 - B. v only
 - C. ii, iv, v
 - D. ii, iii, iv and v
60. Discrimination that is based on the skin colour of a person is referred to as
- A. nepotism
 - B. discrimination
 - C. tribalism
 - D. racism

Tangent Ventures

8 of 12

SOCIALSTUDIES/RE

CHRISTIAN RELIGIOUS EDUCATION

61. According to Genesis *story* of creation, what was created on the fifth day?
 A. Sky, moon and sun
 B. Birds and sea creatures
 C. Sea creatures and man
 D. Heaven and earth
62. According to Genesis 14:2, Abel worked as a
 A. priest B. shepherd
 C. farmer D. judge
63. Adam and Eve were driven out of the garden of Eden because
 A. they had disobeyed God
 B. they were naked
 C. it was infertile
 D. they were very lonely
64. Which one of the following statements is true about Abraham?
 A. His father was called Isaac
 B. He was the first king of Israel
 C. His wife was called Rebecca
 D. He was an ancestor of the Jews
65. What was the **main** reason for the covenant between God and the Israelites on Mount Sinai?
 A. They were God's chosen people
 B. They would never return to Egypt
 C. They would not live in the desert for long
 D. They would inherit the promised land
66. Which one of the following commandments teaches Christian about respect to other people's property?
 A. Thou shall not covet
 B. Thou shall not worship idols
 C. Thou shall not accuse anyone falsely
 D. Thou shall not kill
67. Who among the following people was the only female judge in Israel?
 A. Rachel B. Deborah
 C. Haggai D. Miriam
69. According to the Bible among all the people who left Egypt during Exodus, only two people reached the promised land. These were
 A. Moses and Aaron
 B. Gideon and Joshua
 C. Miriam and Moses
 D. Joshua and Caleb
70. "*Leave your country, your relatives and your father's home and go to the land that I am going to show you.*" (Genesis 12:17). These words were spoken by God to Abram while he was still living in
 A. Goshen B. Ur
 C. Haran D. Bethlehem
71. Which one of the following events took place during the night before the Exodus started?
 A. The Israelites drank wine
 B. All the first born sons of the Israelites were killed by the angel of death
 C. Roasted meat was eaten by both the Israelites and the Egyptians
 D. Blood was smeared on the door posts to identify the houses of the Israelites
72. Jesus told the parable of the talents to make christian learn that they should
 A. use their abilities
 B. use illegal means to gain more money
 C. pray always
 D. forgive those who wrong them
73. "**Do not collect more than is legal**" Luke 3:13. These words were said by John the baptist to the
 A. Tax collectors B. Pharisees
 C. Builders D. Believers
74. The following are events which took place during the baptism of Jesus
 (i) *A voice from heaven was heard saying "This is my own dear son with whom I'm pleased."*
 (ii) *The Holy spirit descended upon him like a dove*
 (iii) *heavens opened*
 Which of the following is the correct order of events?

68. Who among the following kings was punished by God because of sparing the

- life of King Agag? A. King Solomon
- B. King Saul
- C. King David
- D. King Rehoboam

Tangent Ventures

- A. ii, i, ii
- B. i, ii, iii
- C. ii, iii, i
- D. iii, ii, i

75. Who among the following apostles accompanied Jesus in the garden of Gethsemane during His transfiguration

- A. Peter, John and James
- B. Peter, John and Judas Iscariot
- C. John, Andrew and James
- D. Peter, John and Andrew

SOCIAL STUDIES/RE

76. In which form did the Holy spirit come down on the day of pentecost?
 A. Smoke B. Dove
 C. Fire D. Water
77. Which of the following statements is **not** found in the Lord's prayer?
 A. Hallowed be your name
 B. Our father who is in heaven
 C. Maker of heaven and earth
 D. Give us this day our daily bread
78. Which one of the following statements describes the main work of the Holy spirit among Christians? To
 A. protect them against hunger
 B. protect them against diseases
 C. help them acquire wealth
 D. guide and counsel them
79. Which one of the following statements is **not true** about fasting?
 A. It is self-denial
 B. It should be done publicly
 C. It should be done in private
 D. It supplements prayer
80. Which one of the following parables of Jesus teaches Christians to show concern for others?
 A. The parable of the thief at night
 B. The parable of the net
 C. The parable of the sower
 D. The parable of the good Samaritan
81. Which one of the following was **not** an accusation levelled against Jesus before Pilate?
 A. Declaring himself the son of God
 B. Claiming to be the king of the Jews
 C. Saying that he would destroy the temple in Jerusalem and rebuild it in three days
 D. Healing the sick on the day of Sabbath
82. The two disciples on the way to Emmaus recognised Jesus when he
 A. performed a miracle
 B. read the scriptures
 C. prayed with them
 D. broke the bread
84. The following are events which took place during the day of Pentecost
 (i) *they began to speak in other languages*
 (ii) *suddenly there was a noise from the sky which sounded like a strong wind blowing*
 (iii) *tongues of fire rested upon each one of them*
 (iv) *they were filled with the Holy spirit*
 Which was the correct order of events during that day?
 A. ii, iv, iii, i B. iii, ii, i, iv
 C. i, iv, ii, D. ii, iii, iv, i

8

3

M

a

t

e

r

i

a

l

g

i

f

t

s

a

r

e

g

i

v

e

n

t

o

t

h

e

n

e

w

l

y

w

e

d

d

e

d couple in both traditional African communities and Christianity in order to
 A. enable them to start a new life in their homestead
 B. show that they are now grown ups
 C. show that they are important people of the family
 D. accept them as new members of the family

85. *M* *y* *t* *e* *m* *P* *l* *e* *w* *i* *l* *l* *b* *e* *c* *a* *l* *l* *e* *d* *a* *h* *o* *u* *s* *e* *o* *f* *P* *r* *a* *y* *e* *r* *J* *o* *r* *t* *h* *e* *P* *e* *o* *P* *l* *e* *o* *f* *a* *l* *l* *n* *a* *t* *i* *o* *n* *s* *b* *u* *t*
- "you have turned it into a hideout *for* thieves" These words were spoken by Jesus when He was
- A. being dedicated in the temple
 - B. being tempted by the devil
 - C. clearing *the* temple from those who were selling and buying
 - D. being baptised by John in River Jordan
- Which one of the following is a way of promoting justice in the society?
- A. Treating the rich and the poor equally
 - B. Reducing the prices of basic goods
 - C. Giving fake information in a court of law
 - D. Giving all our resources to the poor
- "*There is more happiness in giving than in receiving*" Paul said these words in Acts 20:35. How can Christians put this into practice
- A. praying for the sick
 - B. sharing with the needy
 - C. attending church meetings
 - D. visiting the sick
- Which one of the following would **best** promote a good relationship between parents and their children?
- A. Parents being role models to their children
 - B. Children asking for advice from their parents
 - C. Parents buying gifts for their children
 - D. Children being given what they want by their parents
- How did people in traditional, African communities reconcile with God? By
- A. offering sacrifices
 - B. fighting for the community
 - C. naming children after those who died
 - D. dancing in ceremonies
- You have learnt that your friend Janet is trafficking drugs. As a Christian which is the **best** action to take
- A. pretend that you have not noticed that
 - B. avoid her
 - C. share some drugs with her
 - D. report her to the authorities

ISLAMIC RELIGIOUS EDUCATION

61. The Surah that talks of the revelation of the "*Tanzi*!" is
- A. AI-Qadr. B. AI-
C. Tiyn. Alaq.
D. Dhuha.
62. "*Lakad khalaqnal insana.*" This verse comes from
- A. An-Nas. B. Dhuha.
C. Tiyn. D. Asr.
63. "*Naaswiyatin kaadhibatin khaatwiah*" refers to:
- A. "Then, does he not realise that Allah sees (all)."
B. "Surely, unto your Lord is the return."
C. "Have you seen him who prevents." D. "A lying, sinful forelock!"
64. Which one of the following Hajj activities is **not** performed during Umrah?
- A. Spending a day at Arafah.
B. Performing Tawaaf.
C. Running between Swafa and Marwa.
D. Putting on Ihraam.
65. The first Ayat of the Qur'an given to Prophet Mohammed (SAW) said "IQRA" which means
- A. fight B. preach
C. read D. knowledge
66. The Prophet (SAW) insisted people should spend so as to be given by Allah. This is an act of .
- A. living B. generosity
C. selfishness D. faithfulness
- 67.
70. People cook a lot of food which they throw in dustbins during the Month of Ramadhan. This act is called
- A. Israaf B. Haraam
C. Istinjai D. Istikhara
71. Who among the following prophets had a strong faith?
- A. Adam (A.S) B. Musa (A.S)
C. Ibrahim (A.S) D. Daud (A.S)
72. When he threw his stick to the ground, it turned to a live snake. Who is he?
- A. Ibrahim (A.S) B. Musa (A.S)
C. Isa (A.S) D. Lut (A.S)
73. Allah (S.W) created a man in the best stature and returned him to the lowest of the low. The above teaching is derived from Surah
- A. AI-Tiyn B. AI-Quraish
C. AI-Fatiha D. AI-Aiaq
74. It is a must for all pilgrims to be at Arafat on
- A. 8 Dhul Hijjah.
B. 10 Dhul Hijjah.
C. 9 Dhul Hijjah.
D. 7 Dhul Hijjah.
75. According to Islam it is haraam to fast on
- A. Ayyamul tashriq.
B. Sitatu Shawal.
C. Yaumu Arafat.
D. Ayyamul Beidh.
76. Class Seven pupils came up with the following points during their lesson.

Which one of the following is NOT an optional prayer?

- (i) *Fainting.*
- (ii) *Denouncing Islam.*

- A. Witr
- B. Tahajjud
- C. Taraweh
- D. Mayit

68. What is Zakat for Ksh. 100,000/= that has stayed for one year?

- A. Ksh. 2,500
- B. Ksh. 250
- C. Ksh. 25,000
- D. Ksh. 25

69. What creation of Allah (S.W) in our bodies can be best compared to the car engine?

- A. Eyes
- B. Liver
- C. Lungs
- D. Heart

(iii) *Intentional vomiting.*

(i) *Drinking.*

What were the pupils discussing about?

- A. Pillars of Umrah.
- B. Nullifiers of Saum.
- C. Conditions of Saum.
- D. Sunnah acts of Saum.

77. Riziki eats deliberately during the month of Ramadhan, this is _____

- A. halaal
- B. mustahab
- C. haraam
- D. nothing

78. Pupils at Kakadubu Primary School were asked to list modes of HIV and AIDS transmission. Who was **WRONG**?
- A. Amina: Living with infected people.
 B. Feruz: Through open wounds.
 C. Juma: From an infected mother to the baby during birth.
 D. Magati: Sharing sharp and piercing objects with infected person.
79. Which of the following act is found in both Umrah and Hajj?
- A. Standing at Arafat.
 B. Wearing Ihram.
 C. Going to Mina.
 D. Going to Muzdalifa.
80. Which of the given hadith explains good relationship with neighbours?
- A. "A Muslim is a brother to a Muslim."
 B. "Indeed Allah (S.W) loves kindness in everything that one does."
 C. "If you want to do something think of its outcome."
 D. "Whoever believes in Allah (S.W) and the Last Day should not annoy his neighbours."
81. Which one of the following is the **main** source of knowledge?
- A. Hadith and Sunnah.
 B. Fiah.
 C. Qur'an.
 D. Teacher.
82. Which one of the following acts of Hajj is compulsory for a pilgrim to perform?
- A. Saying the Talbiya.
 B. Assembling at Arafat.
 C. Spending a night at Muzdalifa.
 D. Stoning the Jamarat.
83. Which one of the following events took place first?
- Osman, a boy in *Class Seven* *hilled* in the end of term examination. The **best** thing for him to do is
- A. blame the teachers for their poor teaching.
 B. find out better ways of improving his performance.
 C. ask for remarking.
 D. avoid sitting for any examination in future.
85. Aqabah is
- A. a place where people from Madinah met the prophet (S.A.W).
 B. the black stone at the Kaaba.
 C. the migration of the prophet (S.A.W) to Madinah.
 D. a Muslim festival.
86. Fasting is observed from
- A. dawn to sunset.
 B. sunset till sunrise.
 C. day time till night time.
 D. sunset till dawn.
87. When someone insults you, you should
- A. advise him not to do it again.
 B. insult him the same way.
 C. insult him more.
 D. beat him.
88. Which Prophet of Allah (S.W) created a bird using clay?
- A. Nabii Musa (A.S).
 B. Nabii Ibrahim (A.S).
 C. Nabii Isa (A.S).
 D. Prophet Mohammad (S.A.W).
89. Before selling goods, a seller must
- A. hide the wrong things.
 B. explain the defects.
 C. not tell everything bad on his goods.
 D. look for good profit.
90. What advice will you give to Katana who tested positive of HIV and AIDS after visiting a Voluntary Counselling and Testing Centre?

- A. The Truce of Hudaibiyah.
- B. Conquest of Mak:kah.
- C. Battle of Siffin.
- D. Farewell speech.

- A. To thank Allah (**S.W**) and avoid being re-infected.
- B.** Tell him to commit suicide.
- C. Tell him to stay indoors.
- D. Tell him to run away from his family.

Tangent Ventures

SOCIALSTUDIES/RE

12 of 12