



KCPE ASSESSMENT ONE

STANDARD EIGHT

FIRST TRIAL - 2020

8

TIME: 1HR 40MINS

SCIENCE

HOW TO USE THE ANSWER SHEET
READ THESE INSTRUCTIONS CAREFULLY

- You have been given this question booklet and a separate answer sheet. The question paper contains 50 questions.
- Do any necessary rough work in this booklet.
- When you have chosen your answer, mark it on the ANSWER SHEET, not in this question booklet.
- Use an ordinary pencil only. Use the correct numbered boxes in the answer sheet. Write your Candidate's Number in the brackets (A) outside the brackets.
- Make sure you have written your name and school name as possible and DO NOT FOLD the answer sheet. For questions 1-50, four answers are given. Only one answer is correct. Choose the correct answer by drawing a dark line inside the box near the top of the answer sheet.
- By drawing a dark line inside the box near the top of the answer sheet.
- Do not make any marks
- Keep the sheet as clean
- For each of the question's choices, only one is correct. The correct answer is lettered A, E, C, D. In each case only ONE of the four choices is correct. Mark your answer.
- On the answer sheet the correct answer is to be shown by drawing a dark line inside the box in which the letter you have chosen is written.

Example:-

In the question paper.

- Which one of the following is NOT a controlled method of grazing?

- Zero grazing
- Strip grazing
- Herding
- Tethering

The correct answer is C. (Herding).

On the answer sheet

EN AI [BI [CI ID] ZZ IA1 (81 IC) ID1 E IA1 IB1 IC1 [DJ EI IA TB1 IC1 D1

In the first set, the box with the letter C printed in it is marked.

11. Your dark line **MUST** be within the brackets.

12. For each question **ONLY ONE** bracket is to be marked in each of four brackets.

This Question Paper consist of 8 printed pages.

001 - 2020

SCIENCE

1. The following are function of skin. Which one is **not**?
 - A. It is a sensory organ.
 - B. Protection.
 - C. Filter and excrete urine.
 - D. Its a storage organ.

2. Which group of materials below has definite size but no define shape?
 - A. Sand, stone, wool.
 - B. Water, kerosine, milk.
 - C. Air, water vapour, carbon dioxide.
 - D. Ash, toothpaste, soil.

3. The following are signs and symptoms of a certain disease.

(i) Pain in the joint.

(ii) headache.

(iii) Vomiting.

(iv) Fever

The disease with above signs and s can **best** be prevented by;

- A. destroying the breeding places mosquitos.
- B. immunization
- C. eating balanced diet.

D. avoid eating **contaminat** water.

4. An iron bowl float on water **mainly** due to;
 - A. materials
 - B. shape
 - C. size
 - D. mass
5. Which instrument below can be used to demonstrate effect of heat on matter?
 - A. Windvane.

7. The diagram below shows a certain type of a tooth.

Which statement is **true** about the tooth above?

- A. It is never shed off.
 - B. It is the last to grow in milk teeth.
 - C. It is bread and chisel shaped.
 - D. It is found between canine and premolars.
8. Which stage of HIV infection does the victim test negative but can infect other persons?
 - A. Full blown.
 - B. Asymptomatic.
 - C. Window.

diagram below shows a certain excretory

B ge. C. Wind sock.

R D. Air thermometer.

Q Which one of the following animal feeds can **not** be fed on livestock under zero grazing?

A. pasture

B. fodder

C. silage

D. concentrates.

a

u

idney	Ureter	Bladder	Urethra B.	Left
Kidney	Urethra	Blader	Ureter C.	Right
kidney	Blader	Ureter	Urethra D.	Left
kidney	Ureter	Blader	Urethra	

10.

Which one of the following is an industrial use of water?

- A. Cooking.
- B. Irrigation.
- C. Washing farm tools.
- D. Fountain making.

mark
ed
A
,
B,
C
and
D
re
sp
ec
ti
ve
ly.

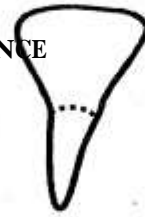
A

B

C

D

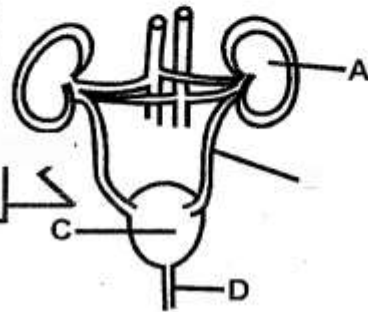
A
R
i
g
h
t
k



ymptoms D. Symptomatic.



STEP FLYER



11. Which of the following groups of plants have the type of roots shown below
- A. Beans, grams, peas.
B. Grass, barley, wheat.
C. Avocado, sorghum, onion
D. Pigweed, maize, cabbage
12. The transfer of heat through solids is called?
- A. Radiation.
B. Expansion.
C. Conduction
D. Convection..
13. Grade Four pupils set-up an experiment shown below.
14. Which of the following air components is
15. Which of the following **is not** an interdependence between plants?
- A. Support.
B. Habitat.
C. Shade.
D. Pollination
16. Which one of the following are the third and fifth planet from the sun?
- A. Mars and Saturn.
B. Venus and Jupiter.
C. Earth and Jupiter
D. Mars and Saturn.
- Which group of food below helps in removal of undigested food in the body?
- A. Fats and oil.
B. Water
C. Fruits and vegetables
D. Milk and arrow roots
- Which of the following is **not** an effect of stress in livestock?

Four pupils to get the correct conclusion, which of the following should be done?

- A. The container must be made of glass.
B. Water container must be closed on the top.
C. Water should be coloured.
D. The distance between the boles should be the same.

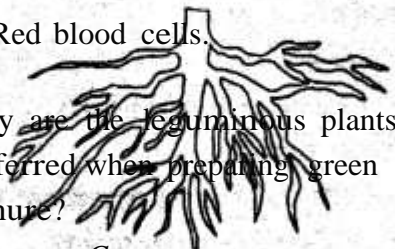
14. Which of the following air components is

- Which blood component is responsible for clotting?
- A. Red blood cells.
B. White blood cells.
C. Plasma.

Which of the following is **not** correctly matched with its use?

D. Red blood cells.

20. Why are the leguminous plants preferred when preparing green manure?



Component	Use
A. Oxygen	Puttin
B. Carbon dioxide	Food ration
C. Rare gases	Making soft drinks
D. Nitrogen	Photosynthesis

- A. They are rich in nitrate.
- B. They take long to decay.
- C. They release nutrients very fast.
- D. They release nitrogen to the air.

21. Livestock parasite can be controlled in the following ways **except**

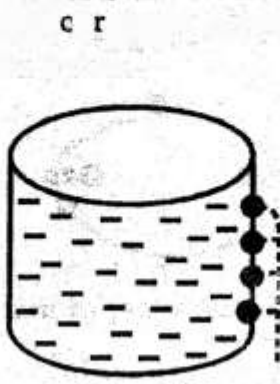
- A. dipping
- B. spraying
- C. deworming
- D. using insecticides

001 -2020

17. STD. 8

SCIENCE

PG 3



STEP FLYER

18. Why is it a parasite?
- A. Irritation.
 - B. Poor health.
 - C. Anaemia.
 - D. High quality product

19. which is...

	mpo	
		g out fire
		preser
	g	y

ce

22. The following *are* internal parasites, which one is **not**?

- A. Tapeworm
- B. Ringworms.
- C. Roundworms.
- D. Livefluke.

23. In which part of alimentary canal does the absorption of **water and minerals** take place?

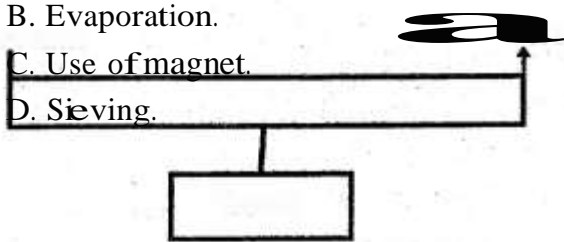
- A. Small **intestines**.
- B. Stomach.
- C. Mouth
- D. Large intestines.

24. Which crop pest below sucks the sap in the leaves of the crops?

- A. Aphids.
- B. Stalk borers.
- C. Cutworms.
- D. Weevils.

25. Which one of the following is method of **separating a mixture** of small solids?

- A. Filtering.
- B. Evaporation.
- C. Use of magnet.
- D. **Sieving**.



26. The diagram below show a lever in use.

Fulcrum

Effort

27. Which one of the following is a way of maintaining simple tools?

- A. Regular use of tools.
- B. Cleaning before use.
- C. Oiling and greasing wooden parts.
- D. Storing them properly.

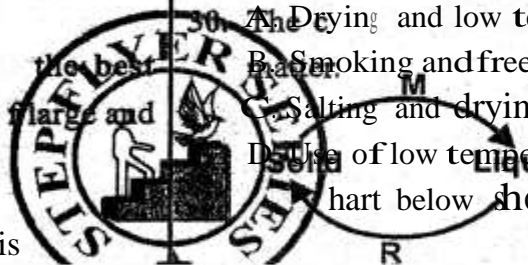
28. Which one of the following represent the **correct order** of foetal development?

- A. Baby \gg foetus \rightarrow **embryo** \rightarrow **zygote**.
- B. Zygote \rightarrow embryo \rightarrow foetus \rightarrow **baby**.
- C. Foetus \rightarrow embryo \rightarrow zygote \rightarrow baby.
- D. Embryo \rightarrow zygote \rightarrow foetus \rightarrow baby.

29. Which pairs **of food** preservation below preserves food by dehydration?

- A. Drying and low temperature.
- B. Smoking and freezing.
- C. Salting and drying.
- D. Use of low temperature and **freezing**.

30. The diagram below shows change of state of



id Gas

P processes cause loss of heat by

- A. M and P
- C. M and N

- B. N and R**
- D. M and R**

31. Which pairs of wastes is excreted by the lungs?

Load

Which lever below is in the same class as the one drawn above?

- A. Spade.
- B. Claw hammer.
- C. Wheelbarrow.
- D. Fishing rod.

- A. Excess water and carbon dioxide.
- B. Excess water and urea.
- C. Carbon dioxide and urea.
- D. Carbon dioxide and salt.

32. Which one of the following does not help in water conservation?

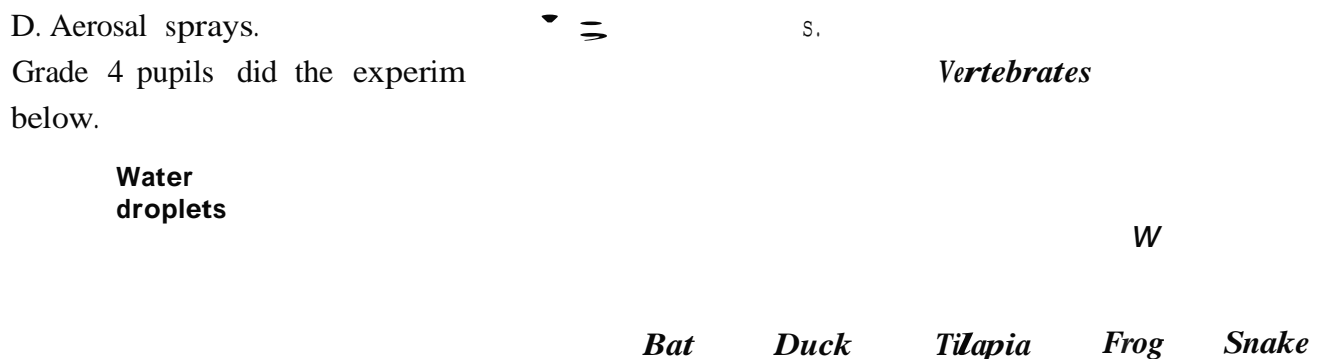
- A. Construction of dams.
- B. Mulching.
- C. Water filtering.
- D. Recycling water.

33. Which one of the following is **not** a function of the placenta during the pregnancy?
 A. Facilitate the transport of physical from the foetus to mother.
 B. Nourishing the foetus.
 C. Prevent the baby from shock.
 D. Facilitate the movement of oxygen from mother to the baby.
34. Which sexually transmitted infection below is **not** caused by the bacteria?
 A. Chancroid.
 B. HIV and AIDS.
 C. Syphilis.
 D. Gonorrhoea.
35. Which one of the following activities does **not** cause water pollution?
 A. Excess use of farm chemical.
 B. Oil spillage.
 C. Release of raw sewage into rivers.
 D. Aerosal sprays.
36. Grade 4 pupils did the experiment below.
38. Std 5 pupils observed an animal with the following characteristics.
 (i) **Moist skin.**
 (ii) **Lay eggs.**
 (iii) **Breathing through lungs.**
 (iv) **Cold blooded.**
39. Which one of the internal parasites below affects the small intestines of the animal?
 A. Hookworms.
 B. Lungworms.
 C. Liverfluke.
 D. Roundworms.

The animal is **likely** to be

- A. duck
 B. bat
 C. platypus
 D. salamander

chart below shows the classification of



From the experiment above, it is not **true** to conclude that;

- A. soil has humus
 B. soil has water
 C. soil has air
 D. the soil was obtained from garden.

The classification of **X** and **W** above was based on;

- A. feeding habits.
 B. methods of reproduction.
 C. presence of backbones.
 D. body temperature.

37. The force that opposes motion can be reduced in the following ways **except**;
41. Shallow V-shaped channels observed on steep bare land is **likely** to be

- A. smothering surface
- B. oiling the surfaces
- C. using rollers
- D. treading the surface.

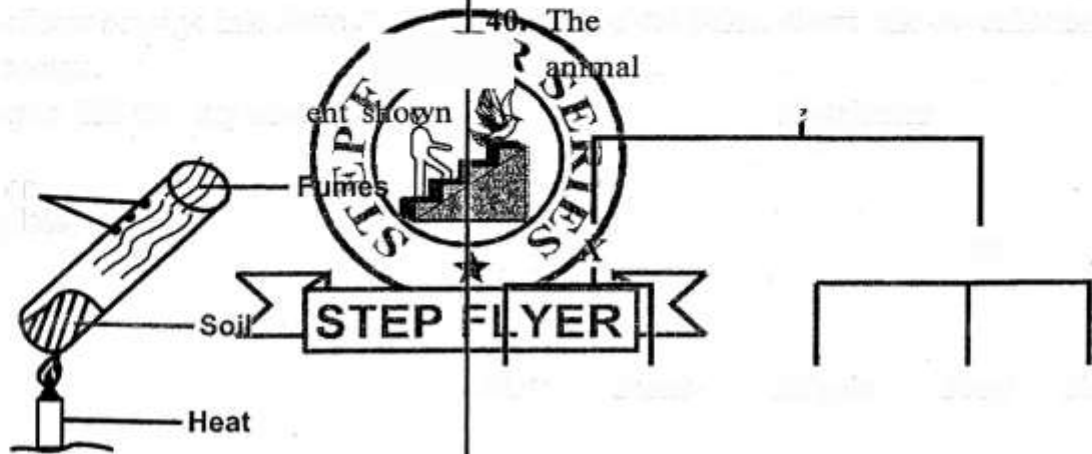
- A. Rill erosion.
- B. Gully erosion
- C. Sheet erosion.
- D. Splash erosion.

001 -2020

STD. 8

SCIENCE

PG 5



42. The diagram below shows a maize seed.

Which parts above shows the embryo of the seed?

- A. N and M B. P and R
 C. Q and P D. Q and R

43. Std 6 pupils placed a glass of water near the window on a sunny day. They placed it on a white piece of paper. What were the pupils likely to be investigating?
 A. How light travels.
 B. Formation of rainbow.
 C. Refraction of light.
 D. Reflection of light.

44. Which one of the following is not the characteristics observed on a cloud of a cloud?

- A. Found high in the sky.
 B. Dark grey in colour.
 C. Indicate fair weather.

D. Flat base.

45. Which one of the following plants is green no-flowering plant?

- A. Pine. B. Cactus.
 C. Sugar cane. D. Mushroom.

What is the function of the layer marked R?

- A. Remove colour.
 B. Kills germs.
 C. Trap organic matter.
 D. Soften the hard water.

47. Which one of the following diseases is a child immunized against at the age of 6 weeks and 9 months respectively?

- A. 1st DPT and 3rd polio vaccines.
 B. 1st DPT and measles.
 C. 2nd DPT and yellow fever.

D. T.B and poliomyelitis.

48. The set up below was used by pupils to

investigate a certain property of matter.

Straw

Tight - plug Ink drop cork

Hot water

Which of the following is correct observation after the glass bottle was

filled with hot water?

A. Glass bottle broke.

B. Glass bottle contacted.

46. The figure below shows a home made water filter.

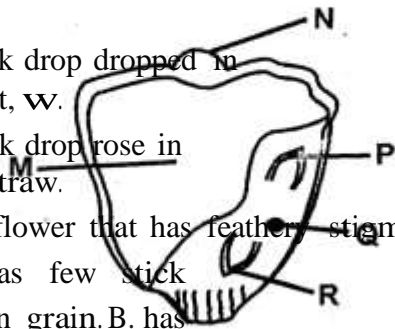
Dirty water

R

C. Ink drop dropped in the st, w.

D. Ink drop rose in the straw.

49. The flower that has feather stigma also.
- A. has few stick pollen grain.
 - B. has powdery pollen



grain. C. is scented.

D. has brightly coloured petals.

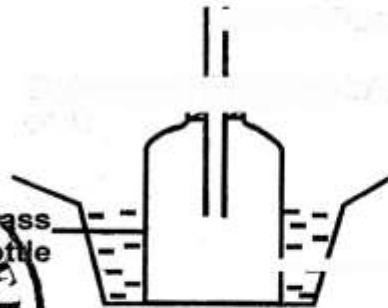
50. Which liquids below will form one layer when put in one container?
- A. Water and oil.
 - B. Petrol and spirit.
 - C. Kerosine and cooking oil.
 - D. Milk and kerosine.

001 -2020

STD. 8

SCIENCE

PG 6



Which one of the

STEP FLYER

