

(ESMA)
003

K.C.P.E THIRD TRIAL STANDARD EIGHT 2020

SCIENCE

Time: 1hr 40mins

READ THESE INSTRUCTIONS CAREFULLY

You have been given this question booklet and a separate answer sheet. The question booklet contains 50 questions.

- Do any necessary rough work in this booklet.
- When you have chosen your answer, mark it on the **ANSWER SHEET**, not in the question booklet.

HOW TO USE THE ANSWER SHEET

- Use an ordinary pencil.
- Make sure that you have written on the answer sheet your **INDEX NUMBER** in the numbered boxes mark your full name and the name of your school in the boxes provided. Write as clearly as possible and do not fold it.
- By drawing a **dark line** in the correct answer box. The answers are given in the form of a multiple-choice question (i.e. School Code Number and the three-figure index number). Choose the correct answer.
- Do not make any marks outside the answer boxes to be shown by drawing a dark line.
- Keep your answer sheet as flat as possible.
- For each of the questions, there are four possible answers labeled A, B, C and D. In each case only ONE of the four answers is correct.
- On the answer sheet the correct answer is to be shown by drawing a dark line inside the box in which the letter you have chosen is printed.

Example

1. The correct answer is B.

14. Which one of the following is the COOL.Y abused drug in Kenya?

A. Tobacco

B. Marijuana

C. Alcohol

D. Tea

The correct answer is C (Alcohol)

On the answer sheet:

In the second set, the box with the letter C printed in it is marked.

- Your dark line **MUST** be within the box.

12. For each question OKEY ONE ~~boit~~ be marked in each set of ~~four~~ boxes.

This question paper consists of 7 printed pages Candidates
should check the **question paper** to ensure that all the
pages are printed as indicated and no questions are missing

Website: www.jesmpublishers.com

E-mail: jesmpublishers@yahoo.com

003 *© Jama Publisher Education **Burr** Ltd. Tel: 0202217088/016554346 10701545759/073420781!* TURN OVER

1. Heat is transferred through liquid by
- A. conduction only.
 - B. radiation only.
 - C. convection only.
 - D. convection and radiation.

2. Which of the following processes occurs

when temperature increases?

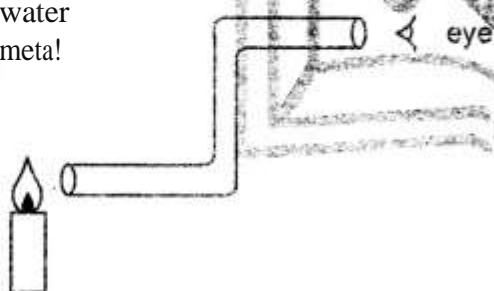
- A. Evaporation and expansion.
- B. Condensation and contraction.
- C. Melting and contraction.
- D. Freezing and melting.

The diagram below represents a set up used

3. Sound travels BEST in a property of light.

- A. air
- B. vacuum
- C. water
- D. metal

- 4.



Which one of the following statements is **CORRECT** about the set up? Light

- A. is refracted at a corner.
- B. travels in a straight line.
- C. is reflected at a corner.
- D. travels in all directions.

6. Digestion of food takes place in all of the following parts **EXCEPT**

- A. oesophagus
- B. small intestine
- C. stomach
- D. mouth

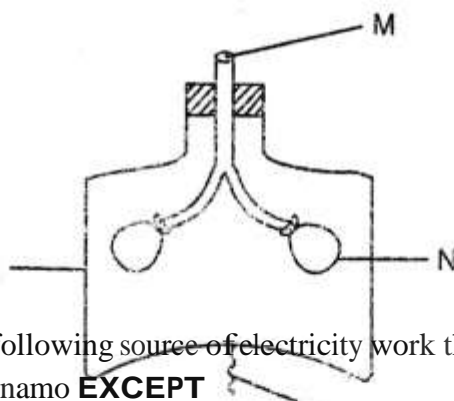
7. Which changes occur in **BOTH** boys and girls? The following are changes that occur during adolescent stage.

- (i) Production of sex cells.
- (ii) Hips broaden.
- (iii) Enlargement of breasts.
- (iv) Increase in weight and height.

8. Which one of the following blood vessels carries blood from the heart to the lungs?

- A. Pulmonary artery
- B. Aorta
- C. Venacava
- D. Pulmonary vein

9. Study the diagram below and answer the question that follows



5. The following sources of electricity work the same way as dynamo **EXCEPT**

- A. wind driven turbine.
- B. geothermal generator
- C. torch batteries.
- D. petrol driven generator.

R

S

When part marked S is pulled down part

A. N burst.

- Mallow air to move out.
- N decrease in size.
- f. Move upward and outward,

2

STD 8 003

SCIENCE 202G

10. The following are the functions of placenta. Which one is **NOT**?

- A. Facilitate transfer of waste products.
- B. Facilitate transfer of food.
- C. Protect the foetus from shock.
- D. Exchange of oxygen and carbondioxide.

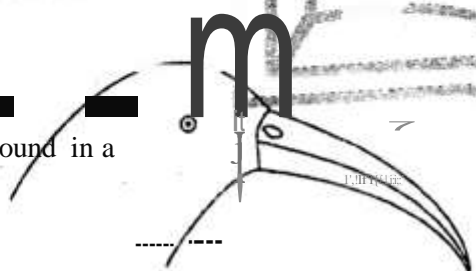
11. Which one of the following is an advantage of zero grazing?

- A. Animals feed on commercial feed only.
- B. Pasture is utilized properly.
- C. Pests and diseases spread easily.
- D. The manure can be easily collected.

12. Which one of the following is a **COMMON** characteristic between a newt and a Nile perch?

- A. Have scales.
- B. Covered with moist skin.
- C. Lay unfertilized eggs.

13. _____ be found in a _____



- A. muddy places.
- B. rice farm.
- C. granary
- D. flower garden

14. Which one of the following pair of animal feed provide animals with energy?

- A. Maize germ and rice husks.
- B. Fish meal and holly

15. Which one of the following animal parasite can be controlled by dipping?+

- A. Tsetsefly
- B. Liverfluke
- C. Tapeworm
- D. Mite

16. The soil which has smooth texture has

- A. large particle.
- B. best drainage
- C. best capillarity
- D. alot of humus

17. The **BEST** way of conserving soil in steep slope is by

- A. mulching
- B. terracing

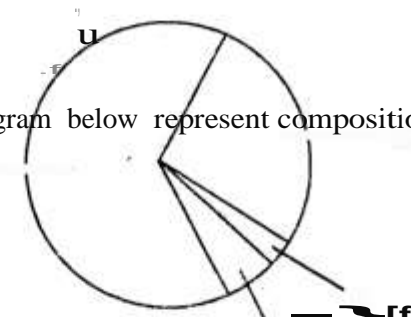
18. Which one of the following is made of trees left-over and f

- A. Farmyard manure
- B. Straight manure
- C. Composite manure
- D. Green manure

_____ material collected from kitchen arm waste?

- A. Farmyard manure
- B. Straight manure
- C. Composite manure
- D. Green manure

19. The diagram below represent composition of air



- C. Salt lick and lucerne
- D. Desmodium and glycine

The component of air used in
preservation of drinks is
represented by letter

- A
-
- S**
- B
-
- N**
- C
-
- M**
- D
-
- R**

20. Which one of the following materials works in the same way as side mirror?

- A. Frosted glass
- B. Skylight
- C. Clean water
- D. Milk

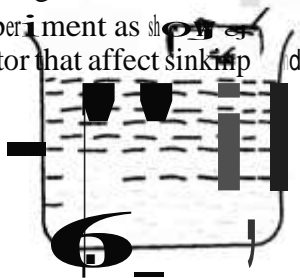
21. Which is the first step when separating a mixture of salt, sand and iron filling?

- A. Filtering the mixture.
- B. Using a magnet.
- C. Adding water to the mixture.
- D. Decanting the mixture

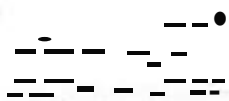
22. Which one of the following pair is made of materials that attract magnet?

- A. Office pin and aluminium foil
- B. Copper coin and staples
- C. Steel wool and nails
- D. Hair strand and glass

23. During a science less experiment as shown in the diagram, factor that affect sinking



£5a3,



Both material floated because of their

- A. material
- B. weight
- C. shape
- D. size

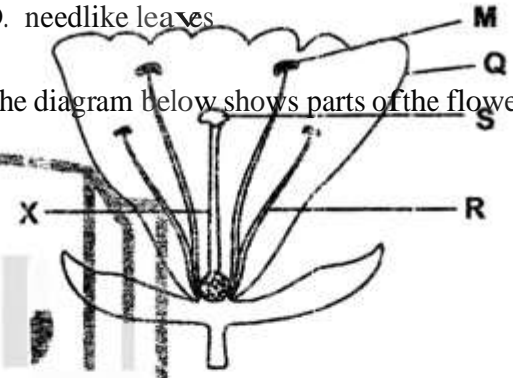
25. Pressure in liquids increases with

- A. surface area
- B. volume
- C. height
- D. depth

26. A plant with flexible stems also have

- A. thin cuticle
- B. fewer stomata
- C. shallow roots
- D. needlelike leaves

27. The diagram below shows parts of the flower



in part labelled

24. Which one of the following is a COMMON characteristic between paraffin and ice cubes?

- A. Have indefinate size.
- B. Have indefinate mass.
- C. Have definate volume.
- D. Expand most on heating.

- 28.** Which one of the following pairs consists of plants that are green and non flowering?
- A. Bracket tree and algae
 - B. Cedar and fern
 - C. Mushroom and moss
 - D. Cypress and onions
- 29.** Which of the following is a sign of unhealthy crops?
- A. Robust growth
 - B. Leafy branches
 - C. Streaked leaves
 - D. Reduced yield

30. Study the food chain below and answer the question

Grass-> grasshopper-> frog-> snake

The **MOST** abundant organisms is represented by

- A. grass
- B. frog
- C. snake
- D. grasshopper

31. In which one of the following activities is water **NOT** used sparingly?

- A. Repairing leaking pipe.
- B. Closing taps when not in use.
- C. -Using basin when bathing.
- D. Construction of dam

32. Which one of the following soil?

- A. Oil spillage
- B. Overstocking
- C. Rotting vegeta
- D. Excess fertilizers

33.  support

- B. habitat
- C. shade
- D. oxygen

34. During a science lesson, pupils collected the following material.

- (i) A glass bottle
- (ii) Water
- (iii) A container
- (iv) Ink
- (v) Mynilla paper

Which weather instrument were pupils

35. Which one of the planets is between Mars and Saturn?

- A. Jupiter
- B. Earth
- B. Neptune
- D. Uranus

36. Thick and feathery clouds also

- A. are dark in colour.
- B. cover the whole sky.
- C. have flat base.
- D. are low in the sky.

37. Which one of the following pairs consist of health effects of drug abuse?

- A. Trauncy and addiction.
- B. Impaired judgement and marital conflicts.

[e@@School dropout and loss of

s~rouness.

d lack of concentration.

wihare signs of a certain

fitted infections .

(ii) Pain

E; as

LIKELY to make?

- A. Liquid thermometer
- B. Raingauge
- C. Windvane
- D. Air thermometer

T
h
e
i
n
f
e
c

tion is **LIKELY** to be

- A. syphilis
- B. gonorrhoea
- C. chancroid
- D. genital herpes

39. Which one of the following ways of campaign against HIV and AIDS is the **MOST** effective? Use of

- A. newspapers
- B. radio
- C. billboard
- D. wedding ceremonies

STD 8 003 SCIENCE 2020



id

40. Which one of the following diseases is **NOT** immunizable but communicable?
- A. Tuberculosis
 - B. Measles
 - C. Typhoid
 - D. Malaria

41. The following are effects of HIV and AIDS to the family **EXCEPT**
- A. loss of income.
 - B. school drop out.
 - C. embarrassment
 - D. increase number of orphan.

42. Which one of the following is a recommended way of storing medicine?
- A. Taking medicine according to doctor's prescription.
 - B. Completing the dosage.
 - C. Labelling all the medicine.
 - D. Checking expiry date of medicine.

43. A child had the following signs and symptoms:
- (i) Wasted muscles.
 - (ii) Alert eyes.
 - (iii) Visible bones.
 - (iv) Crying a lot.

In order to control the above disease, the child should be given food rich in

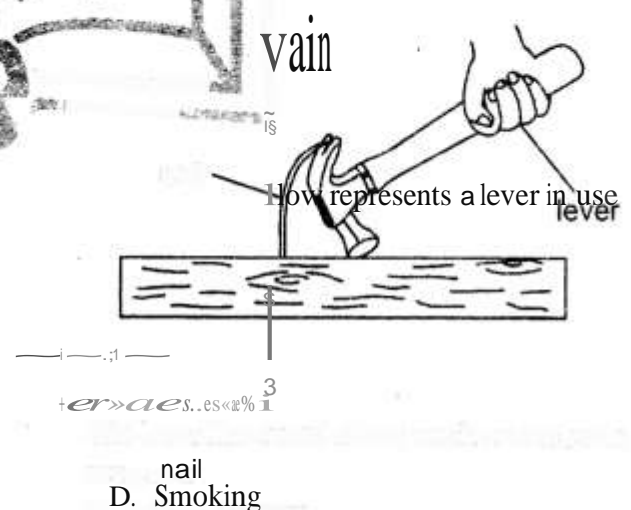
- A. protein
- B. all nutrients
- C. iron
- D. mineral salts

44. Which one is **NOT** a traditional method of preserving food?
- A. Canning
 - B. Use of honey
 - C. Drying

45. Which one of the following lists consist of food rich in protein?
- A. Milk, banana, soya beans
 - B. Fish, wheat, irish potatoes
 - C. Rice, ugali, yams
 - D. Coconut, peas, termites

46. Which one of the following is a sign of cholera?
- A. Persistent cough
 - B. Dehydration
 - C. Skin rashes
 - D. Pain in the joints.

47. Which one of the following is an industrial use of water?
- A. Irrigation
 - B. Rearing fish
 - C. Generating electricity
 - D. Cooling



- A. Nail
- D. Smoking

The lever illustrated above works in the same way as a

- A. wheel barrow
- B. crow bar
- C. spade
- D. bottle opener

49. Metallic tools are **MAINLY** oiled and greased in order to
- A. reduce friction.
 - B. prevent theft.
 - C. make work easier.
 - D. prevent rusting.
50. Which one of the following is measured using a spring balance?
- A. Weight
 - B. Mass
 - C. Length
 - D. Inertia

