



STANDARD EIGHT

DIGITAL EDITION
022

SIGNAL EXAMS 2020

SCIENCE

Time: 1hr 40min

READ THESE INSTRUCTIONS CAREFULLY

- 1 You have been given this question booklet and a separate answer sheet. The question booklet contains 50 questions.
- 2 Do any necessary rough work in this booklet.
- 3 When you have chosen your answer, mark it on the **ANSWER SHEET**, not in the question booklet.

HOW TO USE THE ANSWER SHEET

- 4 Use an ordinary pencil.
- 5 Make sure that you have written on the answer sheet:
YOUR INDEX NUMBER
YOUR NAME
NAME OF YOUR SCHOOL
- 6 By drawing a **dark line** inside the correct numbered boxes mark your full Index Number (i.e. School code Number and the three-figure Candidate's Number) in the grid near the top of the answer sheet.
- 7 Do not make any marks outside the boxes.
- 8 Keep your answer sheet as clean as possible and do not fold it.
- 9 For each of the Questions 1 – 50, four answers are given. The answers are lettered A, B, C, and D. In each case only **ONE** of the four answers is correct. Choose the correct answer.
- 10 On the answer sheet the correct answer is to be shown by drawing a **dark line** inside the box in which the letter you have chosen is written.

Example

In the question booklet:

4. Water can be conserved through the following ways **except** by
- A. mulching
 - B. recycling
 - C. harvesting
 - D. adding chemicals.

The correct answer is **D (adding chemicals)**

On the answer sheet:

4. [A] [B] [C] [D] 14. [A] [B] [C] [D] 24. [A] [B] [C] [D] 34. [A] [B] [C] [D] 44. [A] [B] [C] [D]

In the set of boxes numbered **4**, the box with the letter **D** is printed in it is marked.

11. Your **dark line** **MUST** be within the box.

12. For each question **ONLY ONE** box is to be marked in each set of four boxes.

This question paper consists of 7 printed pages.

© All rights reserved. No direct reprint, duplication, photocopying or sharing on social media platforms without the prior written permission of the publisher.

Signal Publishers Limited



Signal Exams



@Signalexams

1. Which one of the following is **not** a function of the amniotic fluid?
Ecolebooks.com
A. Allows for the free movement of the foetus.
B. Prevents the foetus from shock.
C. Moistens the foetus.
D. Provides food nutrients to the foetus.
2. Which of the following is **not** a sexually transmitted infection?
A. Bilharzia
B. Chancroid
C. Syphilis
D. Gonorrhoea.
3. Blood from the lungs enters the heart through the
A. aorta
B. pulmonary artery
C. venacava
D. pulmonary vein
4. Which of the following crop pests

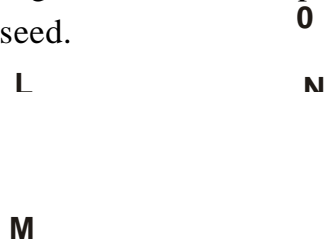
makes large holes in leaves?

- A. Weevils
- B. Weaver birds
- C. Aphids
- D. Cutworms.

5. The following are some of the effects of drug abuse.
- (i) Unconsciousness
 - (ii) Brain damage.
 - (iii) Poor relationship with family members.

6. Which of the following parts of the reproductive system produces sex cells?
A. Vagina and penis.
B. Testis and ovary.
C. Uterus and urethra.
D. Oviduct and penis.

7. The diagram below shows parts of a bean seed.



Which letter represent the seed leaves?

- A. M
- B. L
- C. N
- D. O

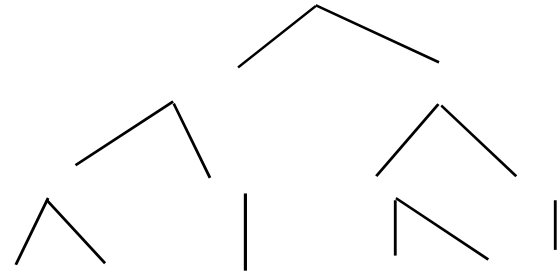
(iv) Rape.

Which pair consists of the social effects of drug abuse?

- A. (i) and (iii)
- B. (i) and (ii)
- C. (iii) and (iv)
- D. (ii) and (iv)

8. The chart below shows classification of plants.

Plants			
Flowering		Non-flowering	
Tap root	fibrous root	Green	Non-green
Carrot	banana	wandering jew	kales fir fern



Which group of plants were **wrongly** classified?

- A. Carrot, kales, wandering jew
- B. Kales, bananas, fern.
- C. Fir, banana, fern.
- D. Wandering jew, carrot, fir.

9. During a Science practical lesson, class six pupils put maize seeds in boiled water and added to it a layer of cooking oil. What condition necessary for germination were they investigating?
- A. Warmth
 - B. Moisture
 - C. Light
 - D. Air.
10. Mass is measured using a
- A. spring balance
 - B. newton
 - C. standard weight
 - D. weighing scale
11. Which one of the following is **not** a living component of the environment?
- A. Earthworms
 - B. Cactus
 - C. Water
 - D. Bacteria.
12. Class four pupils put soil in a clear container and added water. They stirred the mixture then left it to settle. They investigated all the following components **except**
- A. air
 - B. mineral particles
 - C. water
 - D. organic matter

13. The diagram below shows a compost heap.

W

TOOL.

J

H

G

E

Which letter represents the layer that consists of the old compost manure?

- A. Y
- B. X
- C. W
- D. Z

14. A mixture of husks and maize flour can be best separated by

- A. filtering
- B. sieving
- C. winnowing
- D. decanting.

15. What is the total percentage of the two gases used by plants to make food?

- A. 1.0%
- B. 78.03%
- C. 21.03%
- D. 99%

Dry grass

Y
Z
X



16. The diagram below shows a simple



Which pair of letters represents parts on which friction has to be increased for the lever to work effectively?

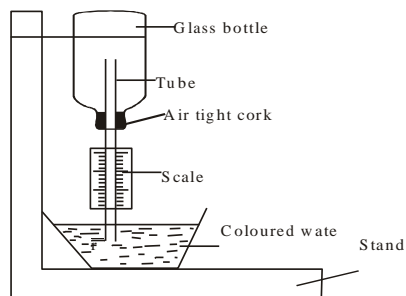
- A. G and E
- B. F and E
- C. G and H
- D. J and F

17. Rollers are used to

- A. reduce the weight of an object
- B. reduce the force that hinders motion
- C. increase the friction of an object
- D. reduce the mass of an object.

18. Which one of the following is the third step when modelling the solar system?
- A. Pasting manila paper on the soft board.
 - B. Modelling the sun and the planets.
 - C. Drawing circles to represent the orbit.
 - D. Pasting name tags against each planet.

19. The diagram below shows a simple weather instrument.



The weather instrument above works under the principle that

- A. air exerts pressure
 - B. air is a good conductor of heat
 - C. liquids contract when cooled
 - D. matter expands when heated.
20. Which one of the following is **not** an effect of parasites on livestock?
- A. Irritation.
 - B. Poor quality products.
 - C. Increased appetite.
 - D. Anaemia.

22. The following are signs and symptoms of certain water-borne diseases.

- (i) Blood in urine and faeces.
- (ii) Muscular pains.
- (iii) Red spots on the chest.
- (iv) Itching at the anus.

Which ones are **not** signs of typhoid?

- A. (ii) and (iii)
- B. (i) and (iv)
- C. (ii) and (iv)
- D. (i) and (iii)

23. Which of the following methods of food preservation works the same way as use of honey?

- A. Smoking
- B. Refrigeration
- C. Salting
- D. Drying.

21. Which one of the following is the **most** expensive method of grazing?

- A. Strip grazing.
- B. Herding.
- C. Paddockging.
- D. Stall feeding.

24. Which one of the following is a common characteristic in rat, duck and gecko?
- A. They lay eggs.
 - B. Their bodies are covered with scales.
 - C. They have constant body temperature.
 - D. They breathe through lungs.
25. After fertilization, all the following parts of a flower dries up **except** the
- A. style
 - B. petals
 - C. sepals
 - D. stigma.
26. Which of the following is **not** an immunizable disease?
- A. Hepatitis
 - B B. Bilharzia
 - C. Measles
 - D. Tuberculosis

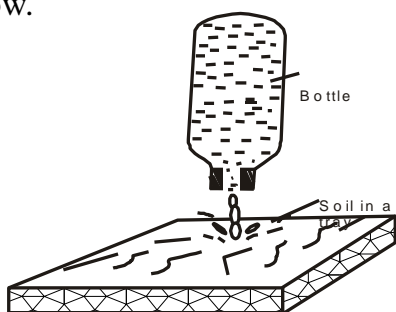
27. The following are importance of taking a HIV test **except** that it helps

- A. in administering proper treatment
- B. to know one's status
- C. in behavioural change
- D. to overcome fear.

28. Which one of the following food nutrients is **not** absorbed in the intestine?

- A. Fats and oils.
- B. Carbohydrates
- C. Proteins
- D. Calcium.

29. Standard six pupils poured water on a flat soil surface. They used a bottle which had a hole in the lid as shown below.



Which type of erosion were they **likely** to be investigating?

- A. Rill erosion
- B. Gully erosion
- C. Splash erosion
- D. Sheet erosion.

31. Which one of the following is a poor conductor of electricity?

- A. Pencil
- B. Razor blade
- C. Copper iron
- D. Marble.

32. All the following animals have the same way of movement **except**

- A. scorpion
- B. cockroach
- C. ant
- D. chicken.

33. Which of the following liquids are **correctly** classified?

Immiscible	Miscible
A. Petrol, cooking oil	Spirit, diesel
B. Milk, kerosine	ink, water
C. Water, milk	Spirit, kerosine
D. Petrol, ink	Diesel, milk.

30. In a convection box, a burning candle is

- mainly** used to
- A. produce smoke
 - B. light the box
 - C. warm the air
 - D. colour the air.

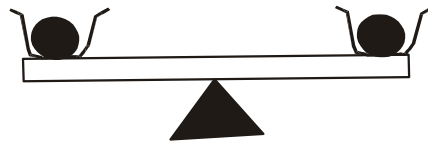
34. Water vapour has definite

- A. density
- B. mass
- C. volume
- D. shape.

35. Two pieces of stones were placed in tins and balanced on a see-saw as shown below.

J

K



What is likely to happen if stone **J** is broken into small pieces?

- A. **K** will move upwards.
- B. **J** will move downwards.
- C. The see-saw will tilt towards **K**.
- D. There will be no change.

36. Which one of the following is the **best** way of controlling both external and internal livestock parasites?

- A. Clearing bushes around the farm.
- B. Practising rotational grazing.
- C. Deworming.
- D. Dipping and spraying.

37. All the following are characteristics of cumulus clouds **except** that they

- A. indicate fine weather
- B. appear low in the sky
- C. have flat base
- D. look like bundles of cotton wool.

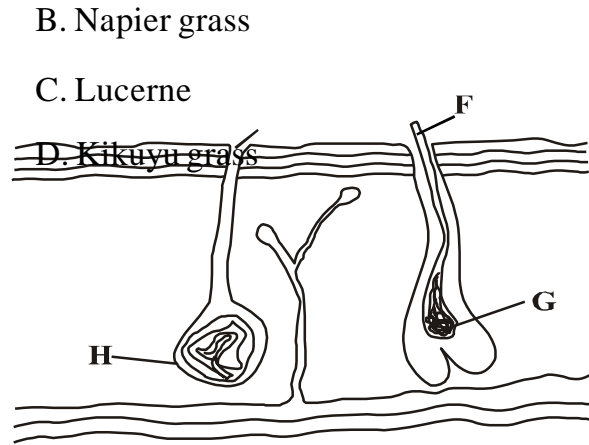
38. The following are all excretory products **except**

- A. excess salt
- B. lactic acid
- C. faeces
- D. carbon dioxide.

39. Which of the following water pollutants is **likely** to increase the growth of water weeds?

- A. Oil spillage.
- B. Floods.
- C. Excess farm chemicals.
- D. Raw industrial sewage.

40. The diagram below shows parts of the skin.



Which letter represents the part that produces sweat?

- A. H
- B. G
- C. E
- D. F

41. A patient with pale eyes and rapid heartbeat should take a diet rich in

- A. calcium
- B. iron
- C. proteins
- D. fibres and water.

42. Which of the following animal feeds is **not** suitable to use as pasture?

- A. Desmodium

43. A mouse was seen basking in the sun. It is true to say that the body temperature of the mouse

- A. rose
- B. dropped
- C. dropped and then rose steadily
- D. did not change.

44. Which one of the following is **not** a fibre crop?

- A. Sunflower
- B. Sisal
- C. Cotton
- D. Flax

45. Which one of the following is **not** true about the first stage of HIV infection?

- A. It has no visible signs.
- B. The patient has no AIDS.
- C. HIV shows positive results.
- D. It is most dangerous stage.

46. Which one of the following is **not** a blood?

- A. Maintains blood pressure.
- B. Suspends red blood cells.
- C. Transports waste products.
- D. Helps in clotting of blood.

47. The following materials are needed when investigating refraction of light **except**

- A. pencil
- B. water
- C. mirror
- D. coin.

48. Which one of the following is **not** a source of heat?

- A. Moon
- B. Sun
- C. Electricity
- D. Gas.

B. Expansion.

C. Evaporation.

D. Condensation.

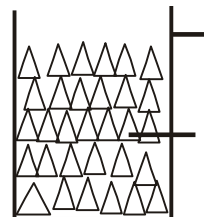
49. Which of the following groups of materials **cannot** sink in water?

- A. Marble, feathers and paper.
- B. Stone, rice and pin.
- C. Leaf, bottle and wire.
- D. Wood, leaf and rubber.

50. Class five pupils placed a glass full of ice cubes in the sun.

Glass

Ice cubes



Which of the following processes did **not** take place after some time?

- A. Melting.