

**441/2
HOME SCIENCE
CLOTHING CONSTRUCTION
PAPER 2
JANUARY 2021**

**KASSU JOINT EXAMINATION
Kenya Certificate of Secondary Education
441/2
HOME SCIENCE
CLOTHING CONSTRUCTION
Paper 2
Time: 2 ½ hours**

This paper consists of 3 printed pages Candidates should check the question paper to ensure that all pages are printed as indicated and that no questions are missing.

A pattern of a girl's dress is provided. You are advised to study the sketches, instructions and the layout carefully before you begin the test.

MATERIALS PROVIDED

1. Pattern pieces
 - A - SKIRT BACK
 - B - FRONT BODICE
 - C - BACK BODICE
 - D - SLEEVE
 - E - COLLAR
 - F - SLEEVE CUFF
 - G - SLEEVE BINDING
 - H - BACK NECK FACING
2. Plain light weight cotton fabric 67 by 90 cm.
3. Sewing thread to match the fabric.
4. 1 large envelope.

THE TEST

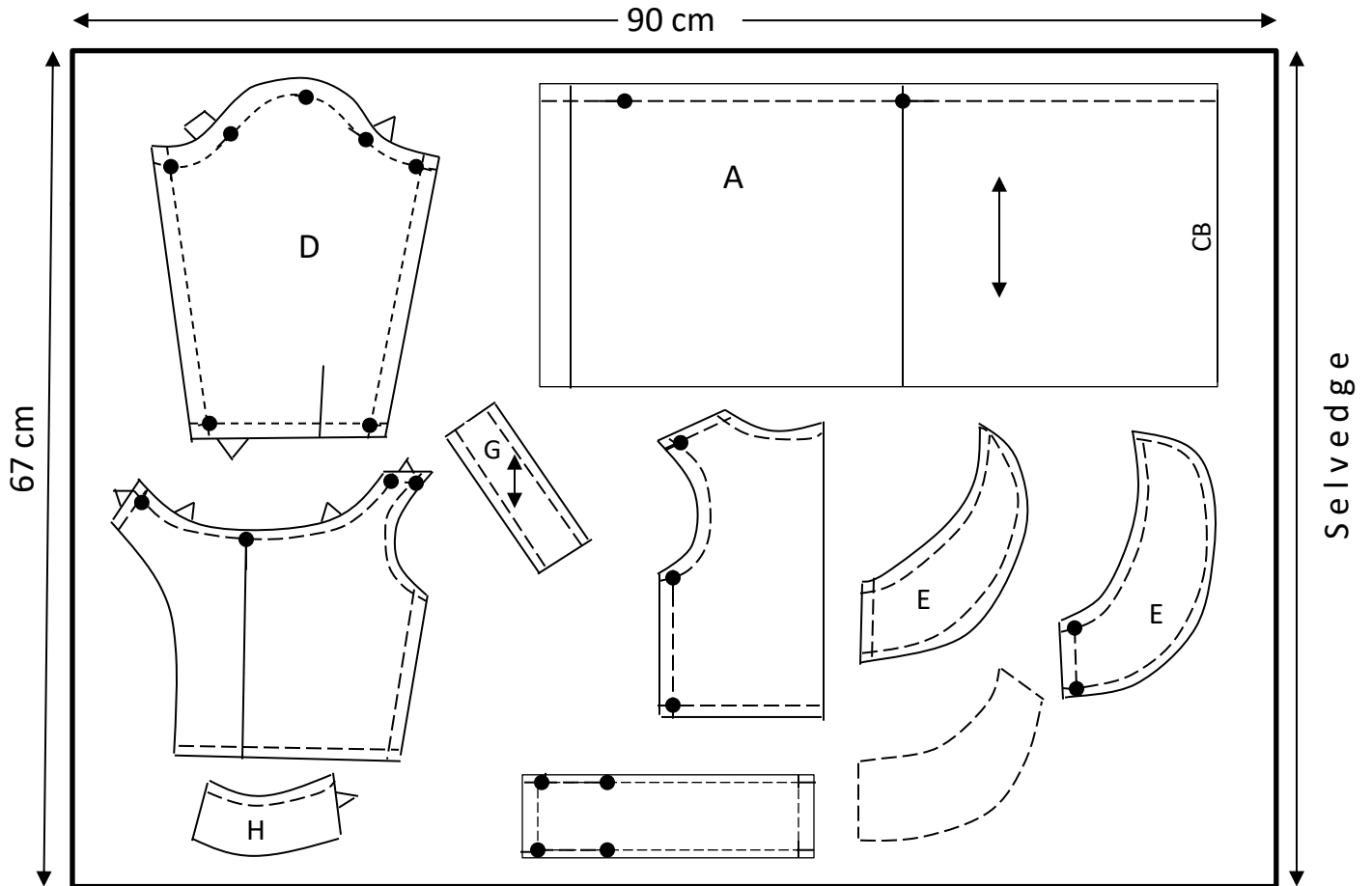
Using the materials provided, cut out and make up the **LEFT HALF** of the girl's dress to show the following.

1. Cutting out. (16mks)
2. Making of the shoulder seam using double stitched seam. (6¹/₂mks)
3. Making of bodice side seam using an open seam. (4¹/₂ mks)
4. Making of gathers on front and back skirts. (1¹/₂mks)
5. Attaching the joined bodices to the skirt using overlaid seam. (9¹/₂mks)
6. Joining the front facing to the back facing and neatening the free edge (6mks)
7. Preparation and attachment of the interfaced collar by sandwiching between the garment and the joined facings. (10mks)
8. Making the bond opening at the lower edge of the sleeve. (5mks)
9. Management of fullness at the crown. (2mks)
10. Making of the underarm seam using French seam. (8mks)
11. Preparation and attachment of the cuff at the lower edge of the sleeve. (8mks)
12. Joining of the sleeve to the garment at the armhole. (**Do not trim, do not neaten**) (7mks)
13. Presentation. (6mks)

NOTE:

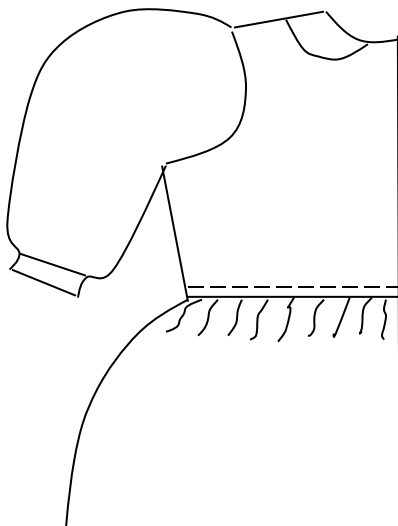
At the end of the test, firmly sew on to your work on a single fabric a label bearing your name and admission number. Remove needles and pins from work. Then fold your work carefully and place it in the envelope. DO NOT PUT SCRAPS OF MATERIALS IN THE ENVELOPE.

LAYOUT - NOT DRAWN TO SCALE



VIEW

FRONT VIEW



BACK VIEW

