



Province of the
EASTERN CAPE
EDUCATION

**NATIONAL
SENIOR CERTIFICATE**

GRADE 10

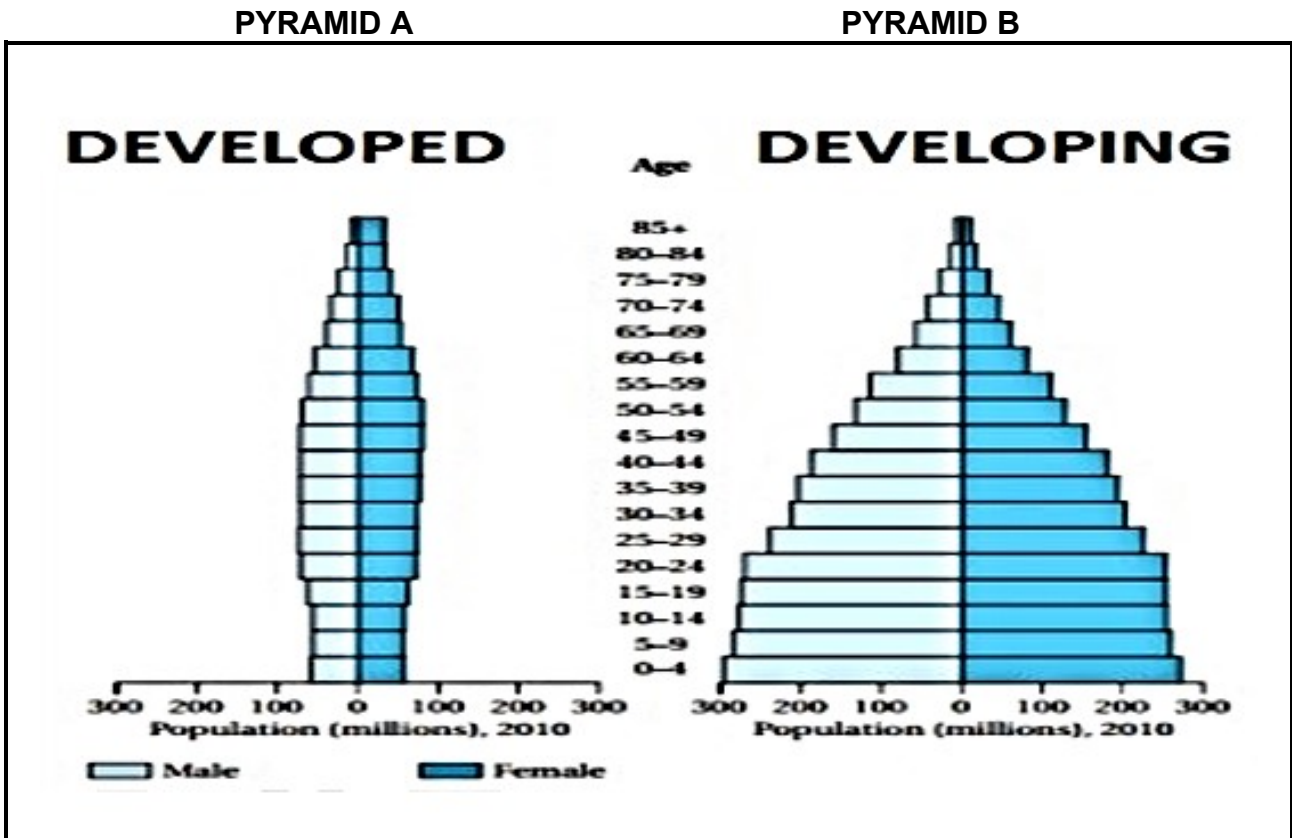
NOVEMBER 2020



**GEOGRAPHY P2
ADDENDUM
(EXEMPLAR)**

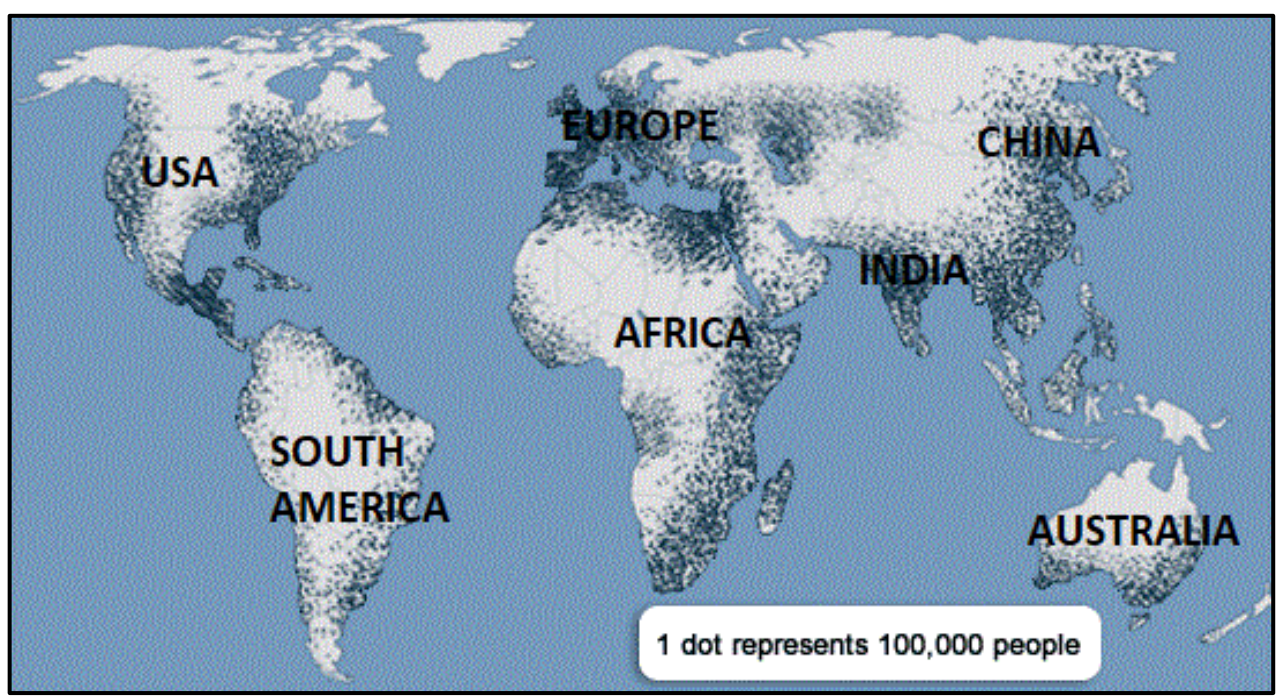
This addendum consists of 9 pages.

FIGURE 1.2: POPULATION PYRAMIDS FOR DEVELOPED AND DEVELOPING COUNTRIES



[Source: Google Images]

FIGURE 1.3 A: WORLD POPULATION DISTRIBUTION



[Source: www.bbc.co.uk]

FIGURE 1.3B: WORLD'S HIGHEST POPULATED COUNTRIES

COUNTRY	POPULATION	DENSITY (P/km ²)	LAND AREA (km ²)	FERTILITY RATE
CHINA	1 439 323 776	153	9 388 211	1,7
INDIA	1 380 004 385	464	2 973 190	2,2
USA	331 002 651	36	9 147 420	1,8
INDONESIA	273 523 615	151	1 811 570	2,3

[Source: www.worldometers]

FIGURE 1.4: XENOPHOBIA IN SOUTH AFRICA (2018)

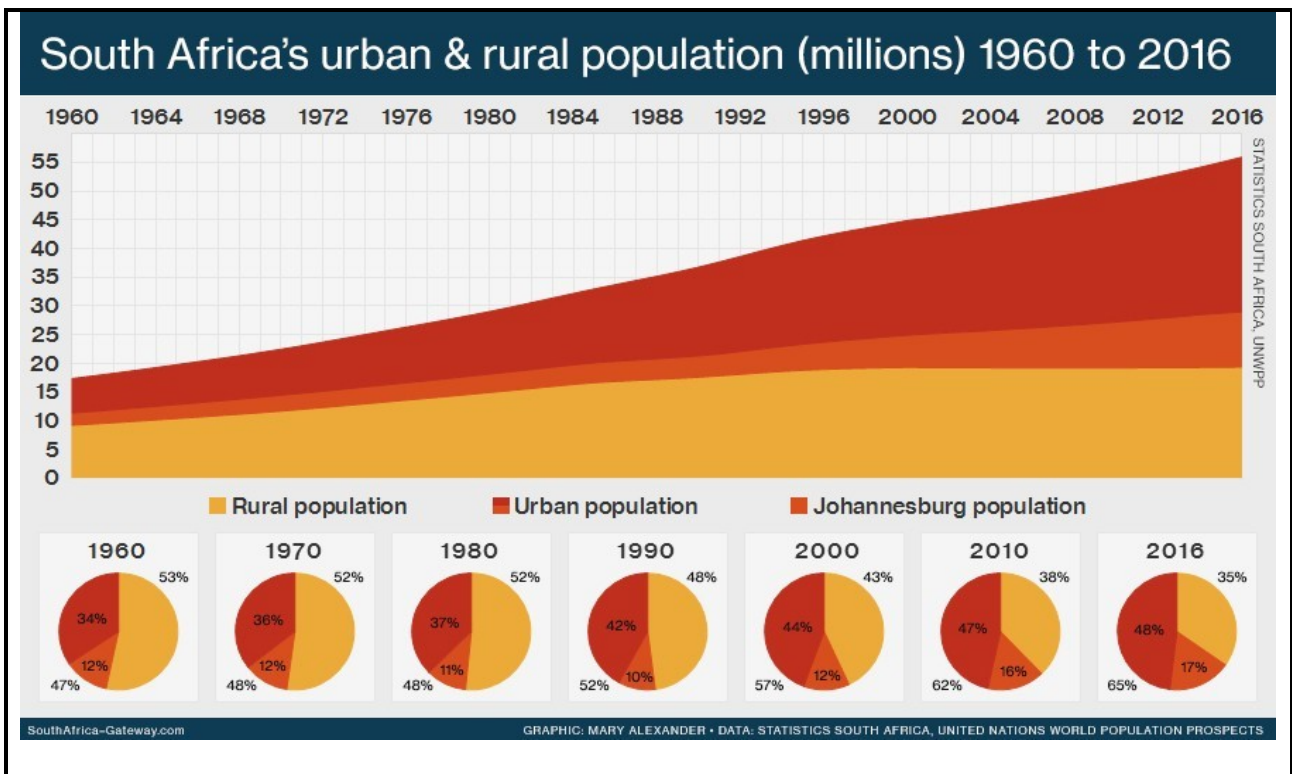


Foreign nationals have, yet again, been attacked, displaced and had their shops looted in South Africa. This is an unfortunate – but entirely unsurprising way to mark the anniversary of the 2008 xenophobic attacks during which tens of thousands were displaced and more than 60 people killed.

Even before 2008, a handful of scholars and activists were urging the government to do more to protect those targeted for violence because of their geographic origins. Only after the 2008 melee did the government join civil society and international organisations in committing to ensure that such bloodletting would never happen again. But it has.

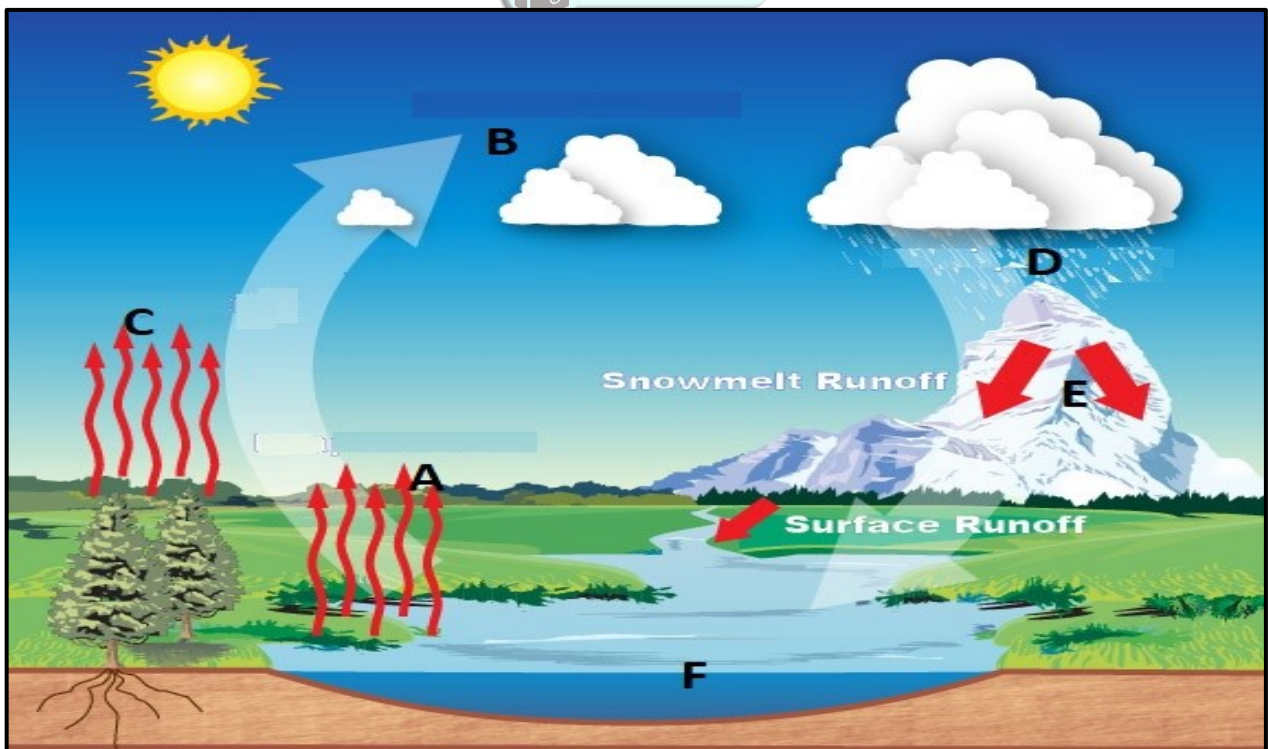
[Source: www.wits.ac.za/news]

FIGURE 1.5: SOUTH AFRICA'S URBAN AND RURAL POPULATION



[Source: StatsSA (2016)]

FIGURE 2.1: THE WATER CYCLE



[Source: www.weather.gov]

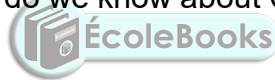
FIGURE 2.3: WAITING FOR DAY ZERO, CAPE TOWN

[source: Google Images]

Daily Maverick: 29 January 2018

Marelise Van Der Merwe

Cape Water Gate Explainer: What do we know about Cape Town's disaster management plan?



On Sunday morning, officials gathered at the disaster Risk Management Centre in Goodwood, Cape Town, to brief media on preparations for day Zero. This followed hot on the heels of the launch of the #Defeat Day Zero campaign in Athlone the previous week. Information is trickling in bit by bit.

The date, as we know, can shift, but City officials have confirmed that it will kick in when dam levels hit 13.5%. The member of Safety and Security said it would take approximately two weeks to shut down water systems and similarly take a couple of weeks to activate the water points and other disaster management systems, so those two processes would overlap, although preparations were already underway.

It should be noted that Day Zero is not the day Cape Town 'runs out' of water. It is the day officials move from Phase One preservation restrictions to Phase Two, what the City has termed disaster restrictions.

FIGURE 2.4: FLOOD IN PORT ST JOHNS**Residents evacuated amid heavy rainfall**

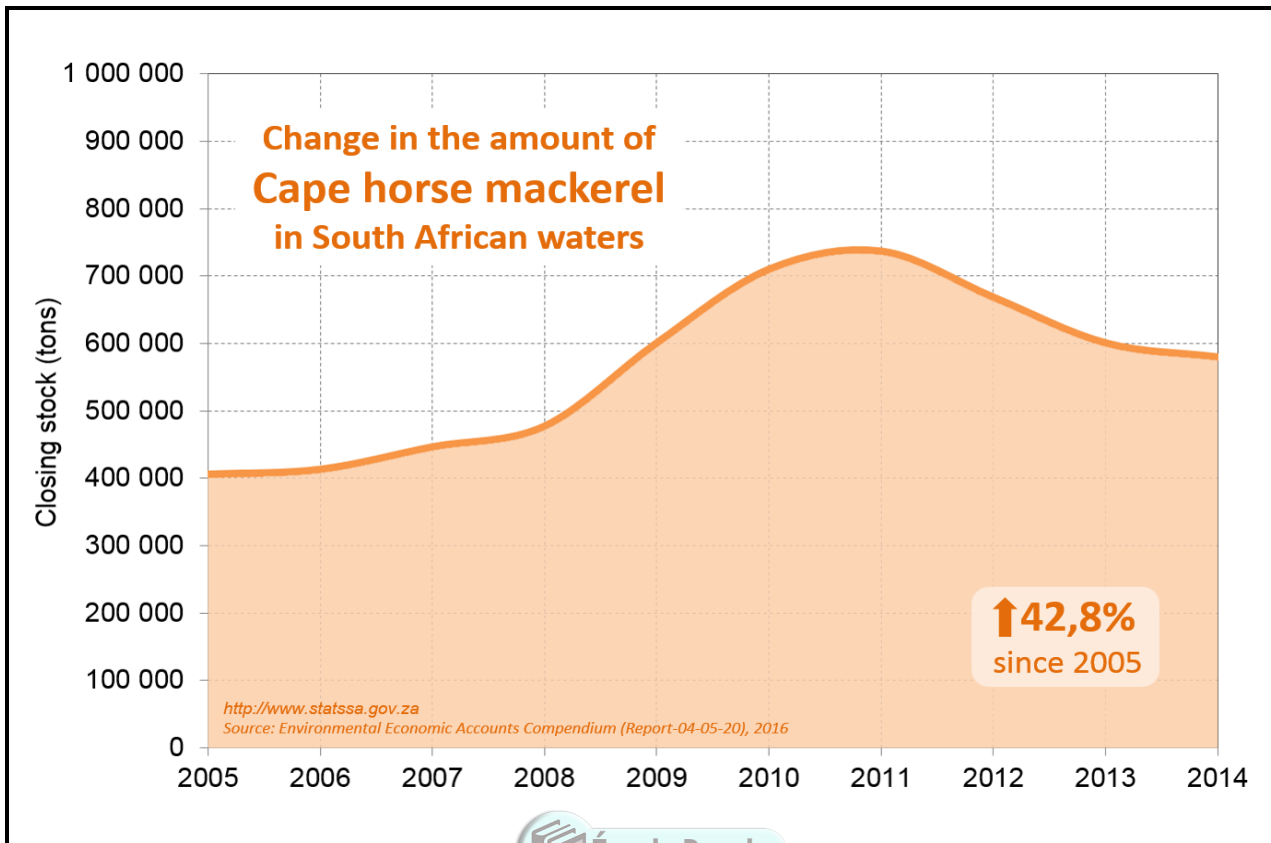
Port St Johns, on the Wild Coast in the Eastern Cape, has been battered by heavy rains and localised flooding, leading to large scale evacuations. The region of Green Farm, situated along the Mzimvubu River, which burst its banks on Monday, has been particularly hard-hit by flash flooding.

According to SABC News, large portions of the low-lying rural settlements have been left inaccessible.



[Source: www.thesouthafrican.com]

FIGURE 2.5: CHANGE IN THE AMOUNT OF CAPE HORSE MACKEREL IN SOUTH AFRICAN WATERS



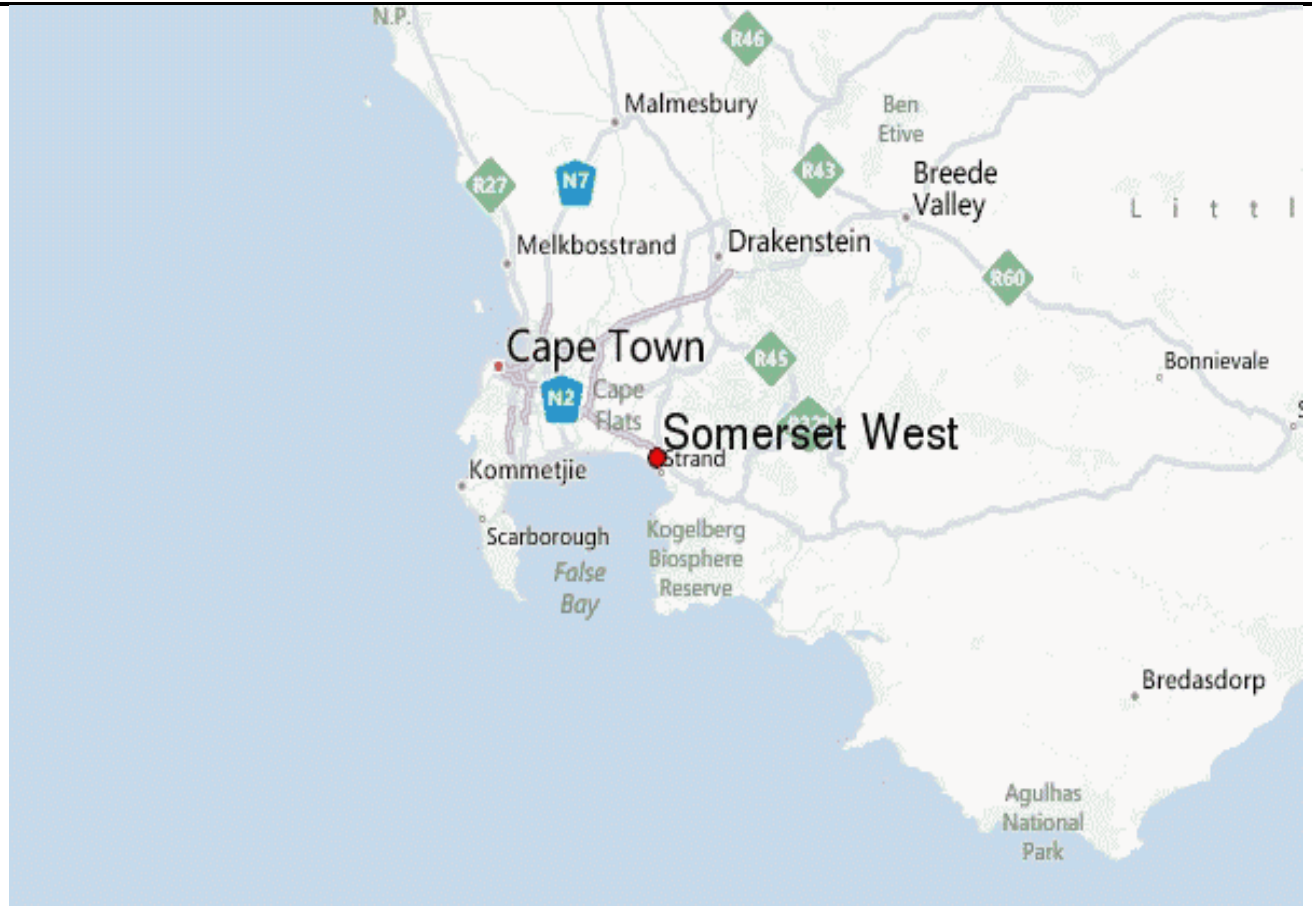
[Source: www.statssa.gov.za]

List of words of some of the Afrikaans and English words and their translation that appear on the topographical map.

ENGLISH	AFRIKAANS
Landing strip	Vliegveld
Furrow	Voor
Caravan park	Karavaanpark
Canal	Kanaal
Sewerage works	Rioolwerke
Golf course	Golfbaan
Excavation	Uitgraving
Nature reserve	Natuurreservaat
Rifle range	Skietbaan
Aerodrome	Vliegveld
Ravine	Kloof

GENERAL INFORMATION ON SOMERSET WEST

Somerset West is a town in the Western Cape, South Africa. Organisationally and administratively it is included in the City of Cape Town metropolitan municipality as a suburb in the Helderberg area (formerly called Hottentots Holland), about 50 kilometres east of Cape Town central city area, and bordering on Strand. The town is overlooked by the Helderberg Mountain (meaning 'clear mountain').



Coordinates: 34° 07' 56" S, 18° 50' 36" E

[Source: <https://www.weather-forecast.com>]

FIGURE 3.3.4

