

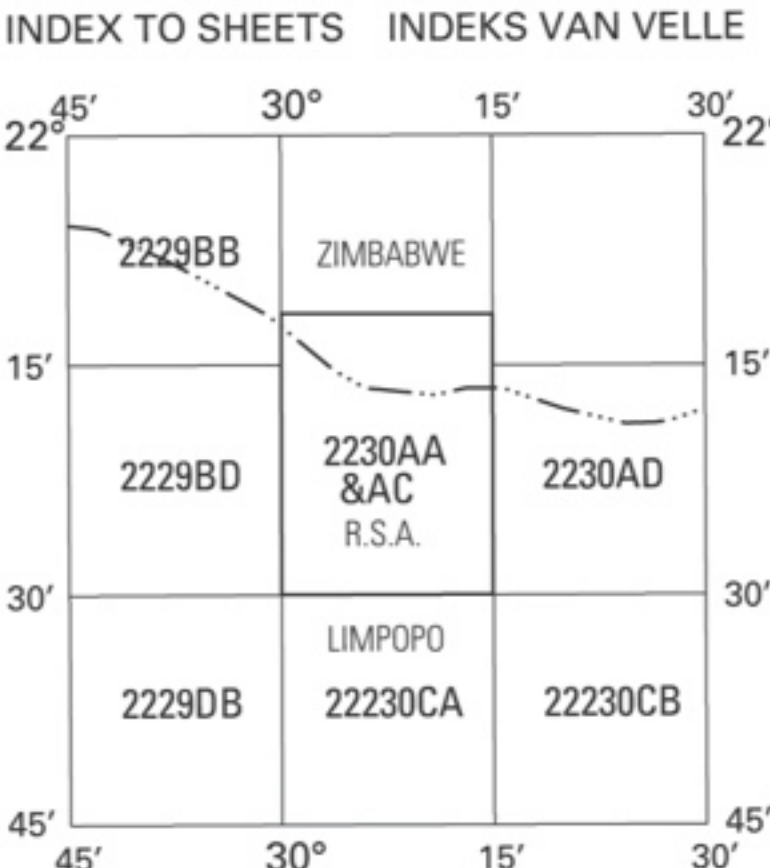
Published by the Chief Directorate: Surveys and Mapping, Private Bag X10, Mowbray
Gepubliseer deur die Hoofdirektorat: Opmetings en Kartering, Private Bag X10, Mowbray
© State Copyright 2003 Staatsouteursreg
This map may not be reproduced by any means, including digital, without prior permission.
Hierdie kaart mag nie deur enige metode herproduseer word, insluitend digitaal, sonder vooraf verkreepte goedkeuring nie.

Printed by the Chief Directorate: Surveys and Mapping.
Gedruk deur die Hoofdirektorat: Opmetings en Kartering.

REFERENCE	VERKLARING
National Freeway; National Route.....	Nasionale Deurpad; Nasionale Roete
Arterial Route.....	Hoofverkeersroete
Main Road.....	Hoofpad
Secondary Road; Bench Mark.....	Sekondêre Pad; Hoogtemerk
Other Road; Bridge.....	Andere Pad; Brug
Track and Hiking Trail.....	Downweg Pad en Voetslaanpad
Railway; Station or Siding.....	Spoorweg; Stasie of Sylyn
Other Railway; Tunnel.....	Andere Spoorweg; Tunnel
Embankment; Cutting.....	Opvalling; Deurgrawing
Power Line.....	Kraglyn
Built-up Area (High, Low Density).....	Beboude Gebied (Hoë, Lae Digtheid)
Buildings; Ruin.....	Geboue; Mursie
Post Office; Police Station; Store.....	Poskantoor; Polisie-stasie; Winkel
Place of Worship; School; Hotel.....	Plek van Aanbidding; Skool; Hotel
Fence; Wall.....	Draadheining; Muur
Windpump; Monument.....	Windpomp; Monument
Communication Tower.....	Kommunikasietoring
Mine Dump; Excavation.....	Myinhooi; Uitgraving
Trigonometrical Station; Marine Beacon.....	Peilbaken; Seevaartbaken
Lighthouse and Marine Light.....	Vuurtoring en Seevaartlig
Cemetery; Grave.....	Begraafplaas; Graf

Cadastral information supplied by the Surveyor-General
Originaal Farms

CONTOUR INTERVAL 20 METRES KONTOUTUSSENRIJME 20 METER
Heights are in metres above mean sea level
Hoogtes is in meter bo gemiddelde seespieël
Gauss Conform Projection. Central Meridian 29° East.
Hartebeesthoek 94 Datum (WGS84 Ellipsoid).
Mean magnetic declination 12°57' West of True North (July 2002).
Mean annual change 7' Westwards (2000-2005).
Supplied by Hermanus Magnetic Observatory.
Gemiddelde magnetiese deklinasie 12°57' Wes van Ware Noord (Julie 2002).
Gemiddelde jaarlikse verandering 7' Weswaarts (2000-2005).
Voorsien deur die Hermanus Magnetiese Observatorium.



REFERENCE	VERKLARING
International Boundary and Beacon.....	Internasionale Grens en Baken
Provincial Boundary.....	Provinsiale Grens
Protected Area.....	Bewarings Gebied
Perennial River.....	Standhoudende Rivier
Non-perennial River.....	Nie-standhoudende Rivier
Non-Perennial Water.....	Nie-standhoudende Water
Dry Water Course.....	Droë Loop
Dry Pan.....	Droë Pan
Marsh and Vlei.....	Moeras en Vlei
Pipeline (above ground).....	Pyplyn (bo die grond)
Water Tower; Reservoir; Water Point.....	Watertoring; Reservoir; Waterpunt
Coastal Rocks.....	Kuslynroete
Prominent Rock Outcrop.....	Prominente Klipbank
Erosion; Sand.....	Erosie; Sand
Woodland.....	Beboste Gebied
Cultivated Land.....	Bewerkte Land
Orchard or Vineyard.....	Boord of Wingerd
Recreation Ground.....	Ontspanningsterrein
Row of Trees.....	Rye Bome

Kadastrale inligting verskrek deur die Landmeter-generaal
Oorspronklike Plase

The delimitation of international and provincial boundaries on this map should not be considered as authoritative.
Die afbakening van internasionale en provinsiale grense op hierdie kaart moet nie as gesaghebbend beskou word nie.





Gauss Conform Projection. Central Meridian 31° East
Contour Interval 5 Metres
Grid Interval 1 000 Metres
Hartebeesthoek 94 Datum
WGS84 Ellipsoid

1 :10 000

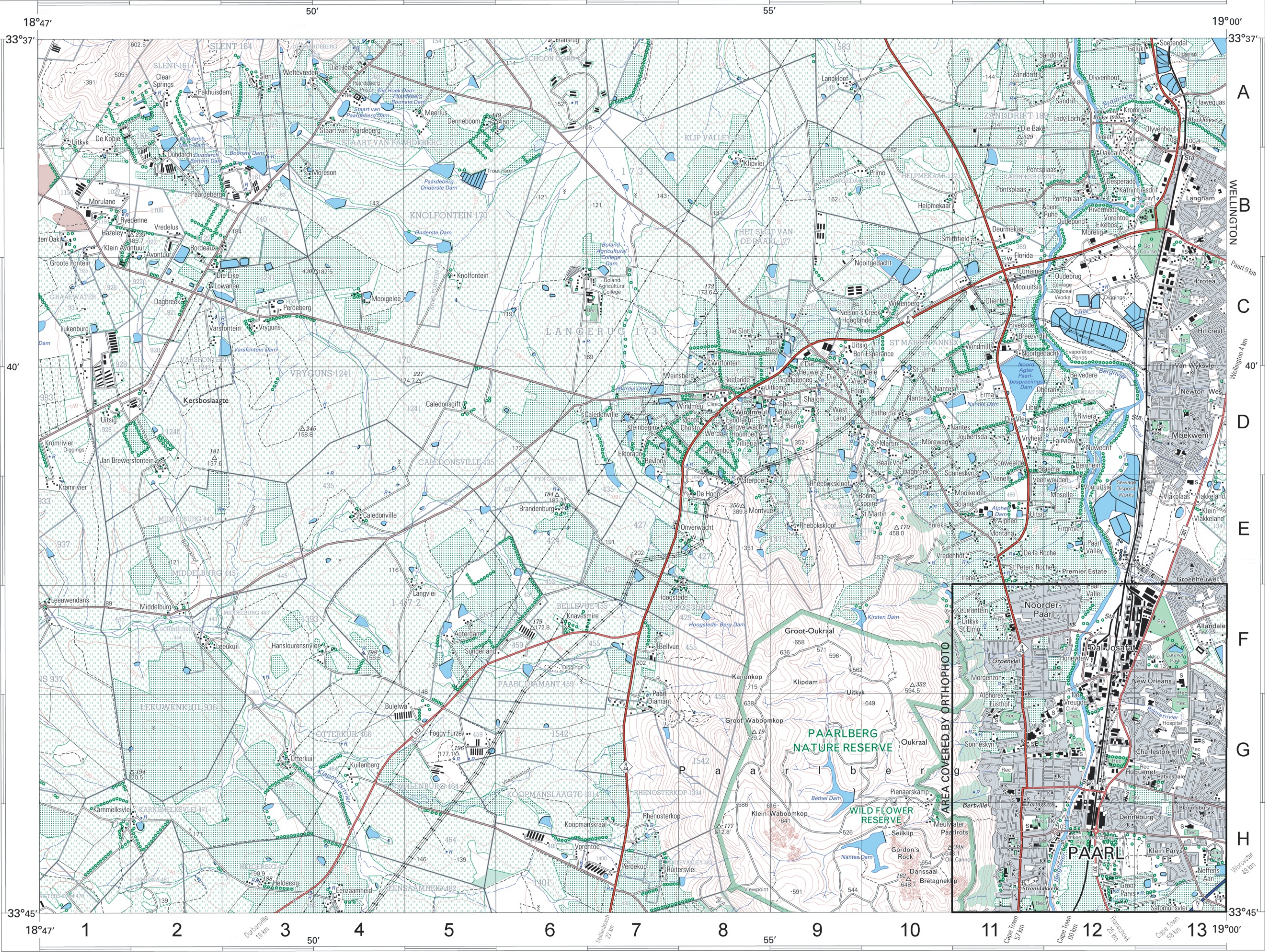
Gauss Konforme Projeksie. Middelmeridiaan 31° Oos
Kontoertussenruimte 5 Meter
Ruittussenruimte 1 000 Meter
Hartebeesthoek 94 Datum
WGS84 Ellipsoid

2230 AC 11 SECOND EDITION
TWEDE UITGAWE 2004

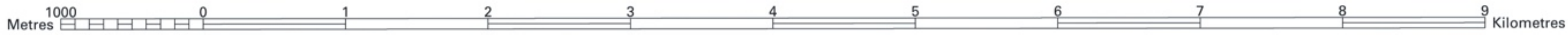
INDEX TO SHEETS INDEX VAN VELLE

2229BD10	2230AC6	2230AC7
2229BD15	2230AC11	2230AC12
2229BD20	2230AC16	2230AC17

30°00'



Published by the Chief Directorate: Surveys and Mapping, Private Bag X10, Mowbray
Gepubliseer deur die Hoofdirektoraat: Opmetings en Kartering, Private Bag X10, Mowbray
© State Copyright 2003 Staatsoutersreg
This map may not be reproduced by any means, including digital, without prior permission.
Hierdie kaart mag nie deur enige metode herproduseer word, insluitend digitaal, sonder vooraf verkreeë goedkeuring nie.



Printed by the Government Printer, Private Bag X85, Pretoria
Gedruk deur die Staatsdrukker, Private Bag X85, Pretoria

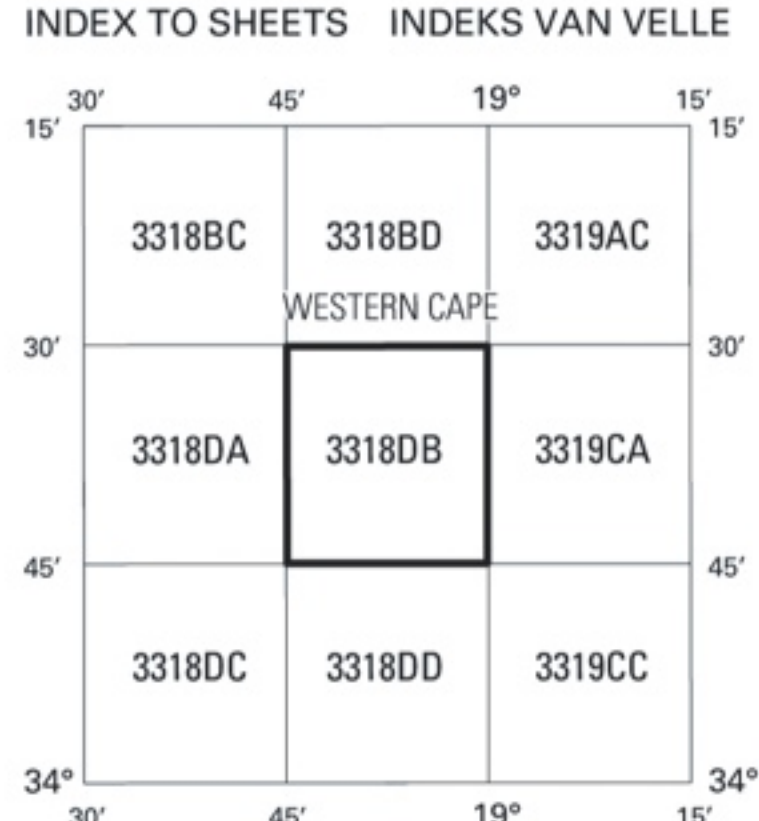
REFERENCE	VERKLARING
National Freeway; National Route.....	Nasionale Deurpad; Nasionale Roete
Arterial Route.....	Hoofverkeersroete
Main Road.....	Hoofpad; Hoogtemerk
Secondary Road; Bench Mark.....	Sekondêre Pad; Hoogtemerk
Other Road; Bridge.....	Andere Pad; Brug
Track and Hiking Trail.....	Dowwe Pad en Voetslaanpad
Railway; Station or Siding.....	Spoorweg; Stasie of Sylyn
Other Railway; Tunnel.....	Andere Spoorweg; Tunnel
Embankment; Cutting.....	Opvalling; Deurgrawing
Power Line.....	Kraglyn
Built-up Area (High, Low Density).....	Beboude Gebied (Hoë, Laë Digtheid)
Buildings; Ruin.....	Geboue; Murasie
Post Office; Police Station; Store.....	Poskantoor; Polisieostasie; Winkel
Place of Worship; School; Hotel.....	Plek van Aanbidding; Skool; Hotel
Fence; Wall.....	Draadheining; Muur
Windpump; Monument.....	Windpomp; Monument
Communication Tower.....	Kommunikasietoring
Mine Dump; Excavation.....	Mynhoop; Uitgraving
Trigonometrical Station; Marine Beacon.....	Peilbaken; Seevaartbaken
Lighthouse and Marine Light.....	Vuurtoring en Seevaartlig
Cemetery; Grave.....	Begraafplaas; Graf

Heights are in metres above mean sea level
Hoogtes is in meter bo gemiddelde seespieël

Mean magnetic declination 23°33' West of True North (July 2002).
Mean annual change 6' Westwards (2000-2005).
Supplied by Hermanus Magnetic Observatory.

Gemiddelde magnetiese deklinasie 23°33' Wes van Ware Noord (Julie 2002).
Gemiddelde jaarlikse verandering 6' Weswaarts (2000-2005).
Voorsien deur die Hermanus Magnetiese Observatorium.

Gauss Conform Projection. Central Meridian 19° East.
Hartebeesthoek 94 Datum (WGS84 Ellipsoid).



The grid lines of the South African Co-ordinate System are indicated in the margin by short black ticks at 10 000 metre intervals, with co-ordinate values in units of 10 000 metres in blue.

Die ruitlyne van die Suid-Afrikaanse Koördinaatsisteem word in die kantlyne aangetoon deur kort swart strepies 10 000 meter van mekaar, met koördinaatwaardes in eenhede van 10 000 meter in blou.

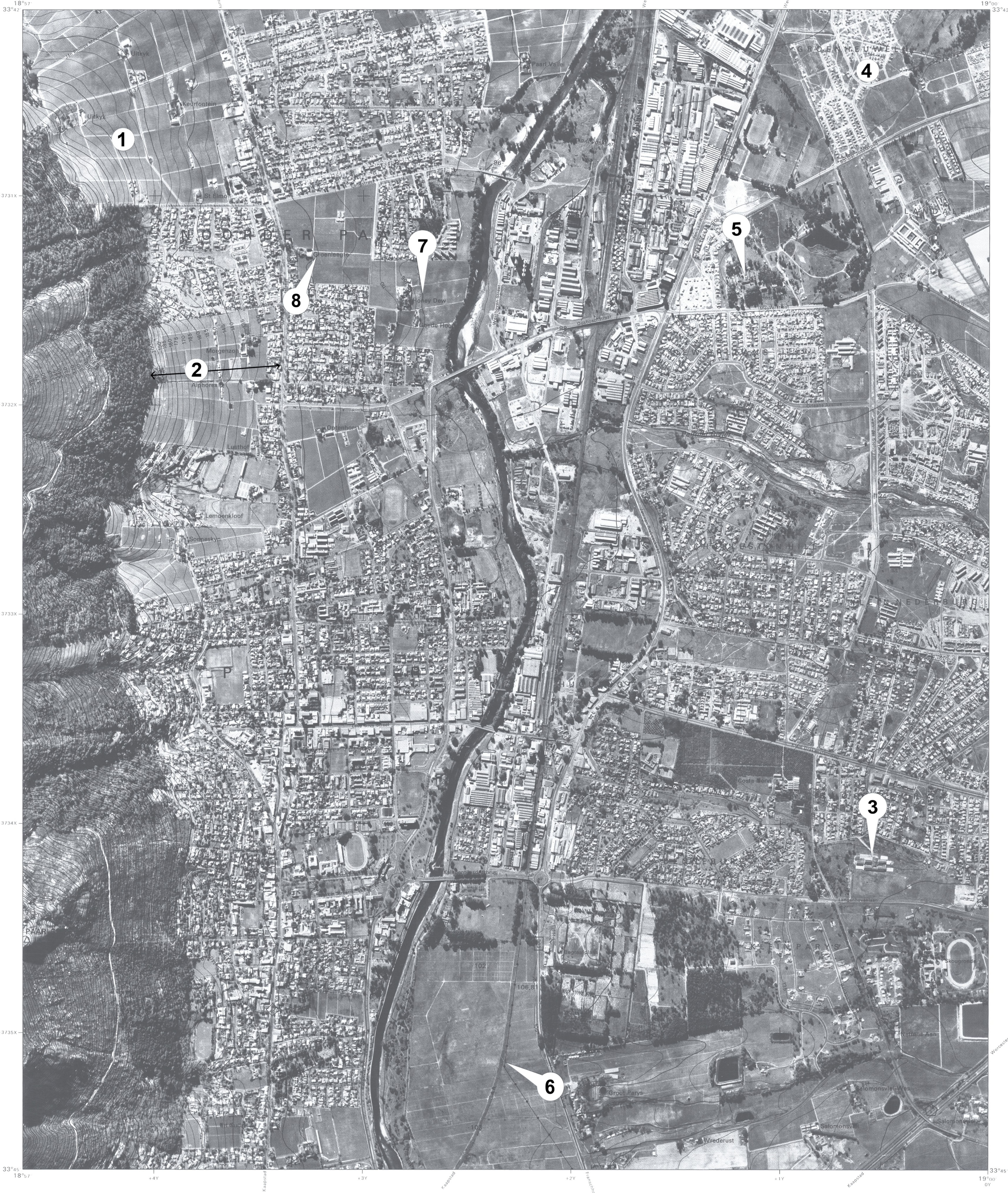
Alle pogings moontlik word aangewend om die akkuraatheid van hierdie kaart te verseker.
Gebruikers word versoek om die Hoofdirektoraat: Opmetings en Kartering, te verwittig van enige foute of weglatings.

REFERENCE	VERKLARING
International Boundary and Beacon.....	Internasionale Grens en Baken
Provincial Boundary.....	Provinsiale Grens
Protected Area.....	Bewarings Gebied
Perennial River.....	Standhoudende Rivier
Perennial Water.....	Standhoudende Water
Non-perennial River.....	Nie-standhoudende Rivier
Non-Perennial Water.....	Nie-standhoudende Water
Dry Water Course.....	Droë Loop
Dry Pan.....	Droë Pan
Marsh and Vlei.....	Moeras en Vlei
Pipeline (above ground).....	Pypleyn (bo die grond)
Water Tower; Reservoir; Water Point.....	Watertoring; Reservoir; Waterpunt
Coastal Rocks.....	Kuslynrotse
Prominent Rock Outcrop.....	Prominente Klipbaken
Erosion; Sand.....	Erosie; Sand
Woodland.....	Beboste Gebied
Cultivated Land.....	Bewerkte Land
Orchard or Vineyard.....	Boord of Wingerd
Recreation Ground.....	Ontspanningssterrein
Row of Trees.....	Rye Bome

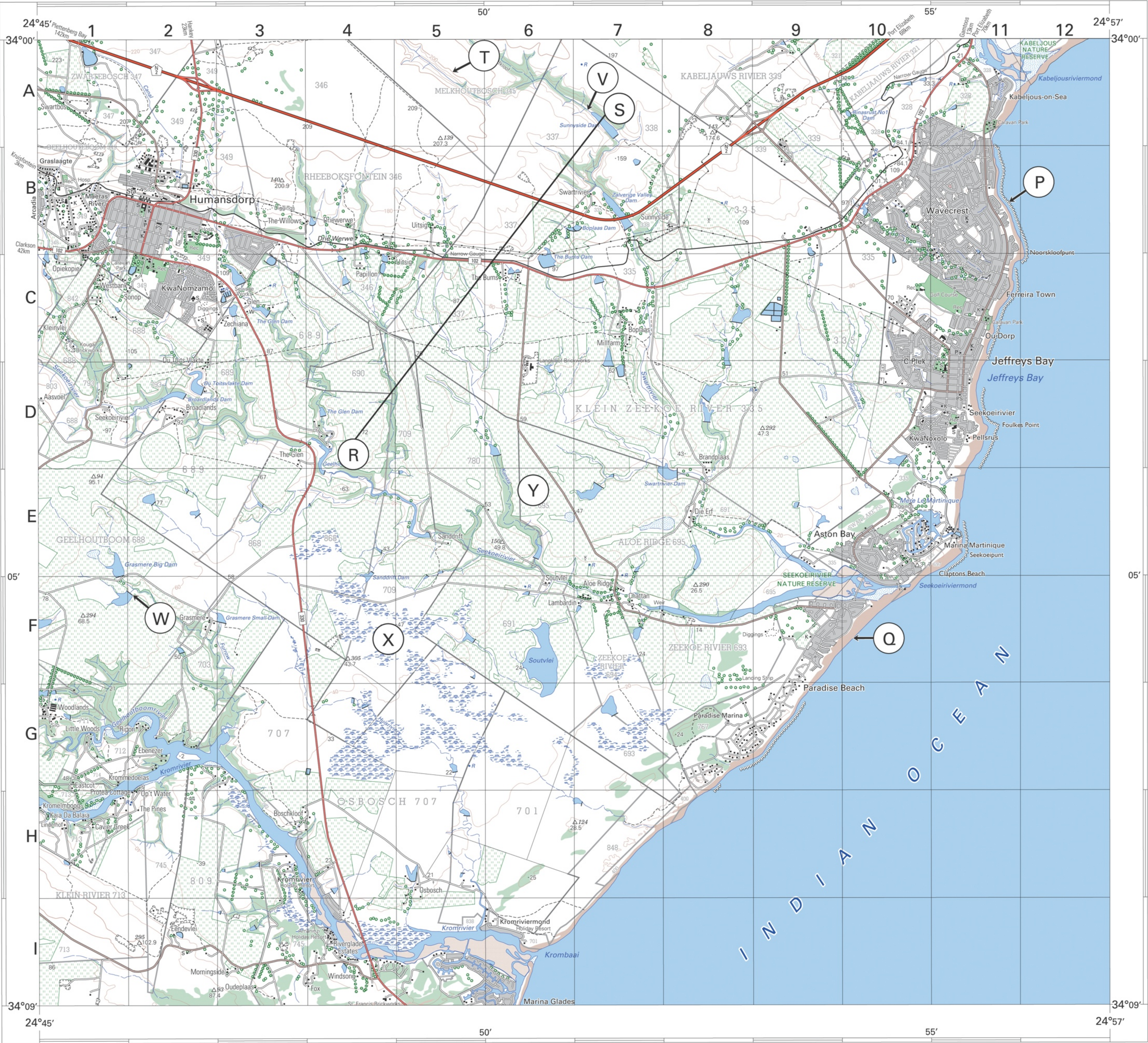
Kadastrale inligting verskrek deur die Landmeter-generaal
Oorspronklike Plaas.....

Geographical names, show in this type face, have not been officially approved.
Geografiese name, in hierdie letterbeeld, is nie amptelik goedgekeur nie.





INDEKS VAN VELLE			INDEX TO SHEETS		
DB19	DB20	CA16	33°45'	19°00' 0Y	
DB24	DB25	CA21			
DD4	DD5	CC1			



Published by the Chief Directorate: Surveys and Mapping, Private Bag X10, Mowbray
Gepubliseer deur die Hoofdirektoraat: Opmetings en Kartering, Private Bag X10, Mowbray
© State Copyright 2002 Staatsouteursreg
This map may not be reproduced by any means, including digital, without prior permission.
Hierdie kaart mag nie deur enige metode herproduseer word, insluitend digitaal, sonder vooraf verkreepte goedkeuring nie.

Heights are in metres above mean sea level
Hoogtes is in meter bo gemiddelde seespieël

Printed by the Chief Directorate: Surveys and Mapping.
Gedruk deur die Hoofdirektoraat: Opmetings en Kartering.

REFERENCE	VERKLARING
National Freeway; National Route.....	Nasionale Deurpad; Nasionale Roete
Arterial Route.....	Hoofverkeersroete
Main Road.....	Hoofpad
Secondary Road; Bench Mark.....	Sekondêre Pad; Hoogtemerk
Other Road; Bridge.....	Andere Pad; Brug
Track and Hiking Trail.....	Dowwe Pad en Voetslaanpad
Railway; Station or Siding.....	Spoorweg; Stasie of Sylyn
Other Railway; Tunnel.....	Andere Spoorweg; Tonnel
Embankment; Cutting.....	Opvulling; Deurgrawing
Power Line.....	Kraglyn
Built-up Area (High, Low Density).....	Beboede Gebied (Hoë, Laë Digtheid)
Buildings; Ruin.....	Geboue; Mursie
Post Office; Police Station; Store.....	Poskantoor; Polisie-stasie; Winkel
Place of Worship; School; Hotel.....	Plek van Aanbidding; Skool; Hotel
Fence; Wall.....	Draadheining; Muur
Windpump; Monument.....	Windpomp; Monument
Communication Tower.....	Kommunikasietoring
Mine Dump; Excavation.....	Mynhoop; Uitgraving
Trigonometrical Station; Marine Beacon.....	Peilbaken; Seevaartbaken
Lighthouse and Marine Light.....	Vuurtoring en Seevaartlig
Cemetery; Grave.....	Begraafplaas; Graf

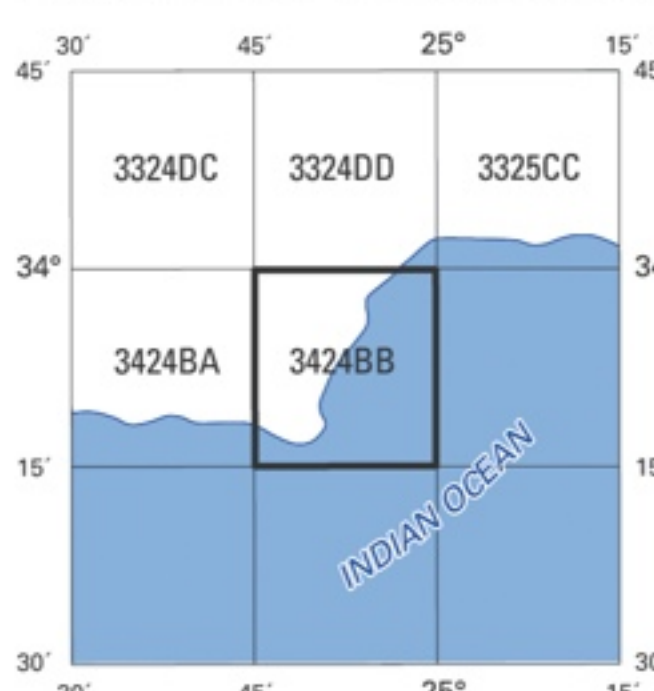
CONTOUR INTERVAL 20 METRES KONTTOERTUSSENRUIMTE 20 METER

Gauss Conform Projection, Central Meridian 25° East.
Hartebeesthoek 94 Datum (WGS84 Ellipsoid).

Mean magnetic declination 25°29' West of True North (July 2001).
Mean annual change 9' Westwards (1995-2000).
Supplied by Hermanus Magnetic Observatory.

Gemiddelde magnetiese deklinasie 25°29' Wes van Ware Noord (Julie 2001).
Gemiddelde jaarlikse verandering 9' Weswaarts (1995-2000).
Voorsien deur die Hermanus Magnetiese Observatorium.

INDEX TO SHEETS INDEKS VAN VELLE



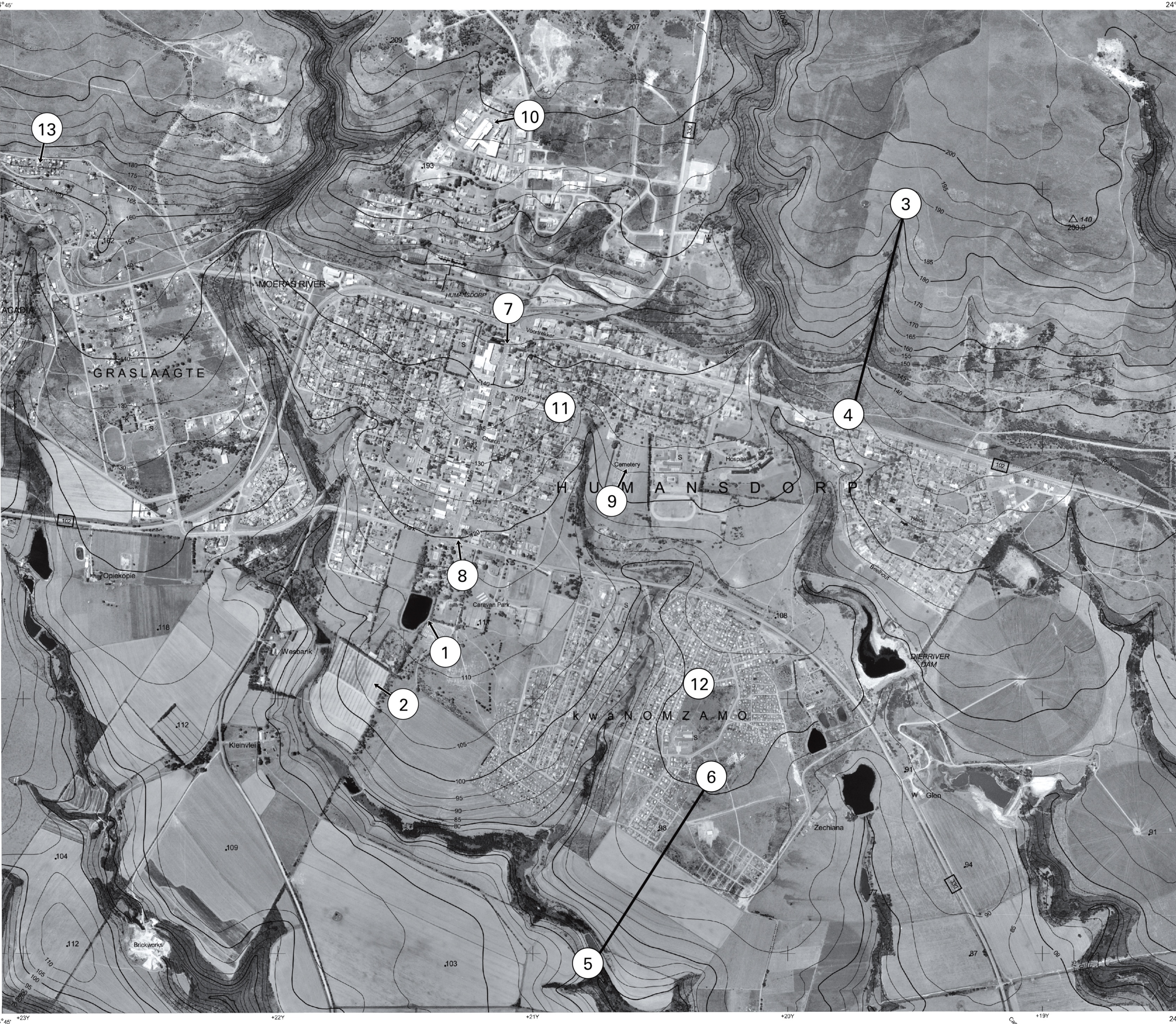
REFERENCE	VERKLARING
International Boundary and Beacon.....	Internasionale Grens en Baken
Provincial Boundary.....	Provinsiale Grens
Protected Area.....	Bewarings Gebied
Perennial River.....	Standhoudende Rivier
Non-perennial River.....	Nie-standhoudende Rivier
Dry Pan.....	Droë Loop
Marsh and Vlei.....	Moeras en Vlei
Pipeline (above ground).....	Pylyn (bo die grond)
Water Tower; Reservoir; Water Point.....	Watertoring; Reservoir; Waterpunt
Coastal Rocks.....	Kuslynroete
Prominent Rock Outcrop.....	Prominente Klipbank
Erosion; Sand.....	Erosie; Sand
Woodland.....	Beboeste Gebied
Cultivated Land.....	Bewerkte Land
Orchard or Vineyard.....	Boord of Wingerd
Recreation Ground.....	Ontspanningsterrein
Row of Trees.....	Rye Bome

Kadastrale inligting verskrek deur die Landmeter-generaal
Oorspronklike Plase

Whilst every effort is made to ensure the accuracy of this map, users noting errors
and omissions are requested to notify the Chief Directorate: Surveys and Mapping.



Alle pogings moontlik word aangewend om die akkuraatheid van hierdie kaart te verseker.
Gebruikers word versoek om die Hoofdirektoraat: Opmetings en Kartering,
te verwittig van enige foute of weglatings.



Published by the Chief Directorate: Surveys and Mapping, Private Bag X10, Mowbray.
Gepubliseer deur die Hoof Direktooraat: Opmetings en Kartering, Private Sak X10, Mowbray.

Photography 499/357
Fotografie 499/357

© State Copyright 2001 Staatsouteursreg

Whilst every effort is made to ensure the accuracy of this map, users noting errors and omissions are requested to notify the Chief Directorate: Surveys and Mapping.

Alte pogings maontlik word aangewend om die akkuraatheid van hierdie kaart te verseker. Gebruikers word versoek om die Hoofdirektooraat: Opmetings en Kartering, te verwittig van enige foute of weglatings.

Gauss Conform Projection, Central Meridian 25° East

Contour Interval 5 Meters

Grid Interval 1 000 Meters

Hartebeesthoek 94 Datum

WGS84 Ellipsoid

1:10 000



Gauss Konforme Projeksie, Middellmeridiaan 25° Oos

Kontoertussenruimte 5 Meter

Ruitussenruimte 1 000 Meter

Hartebeesthoek 94 Datum

WGS84 Ellipsoid

3424 BB 1

SECOND EDITION
TWEDE UITGAWE
1999

INDEX TO SHEETS		INDEKS VAN VELLE	
3324DC25	3324DD21	3324DD22	
3424BA5	3424BB1	3424BB2	
3424BA10	3424BB5	3424BB7	