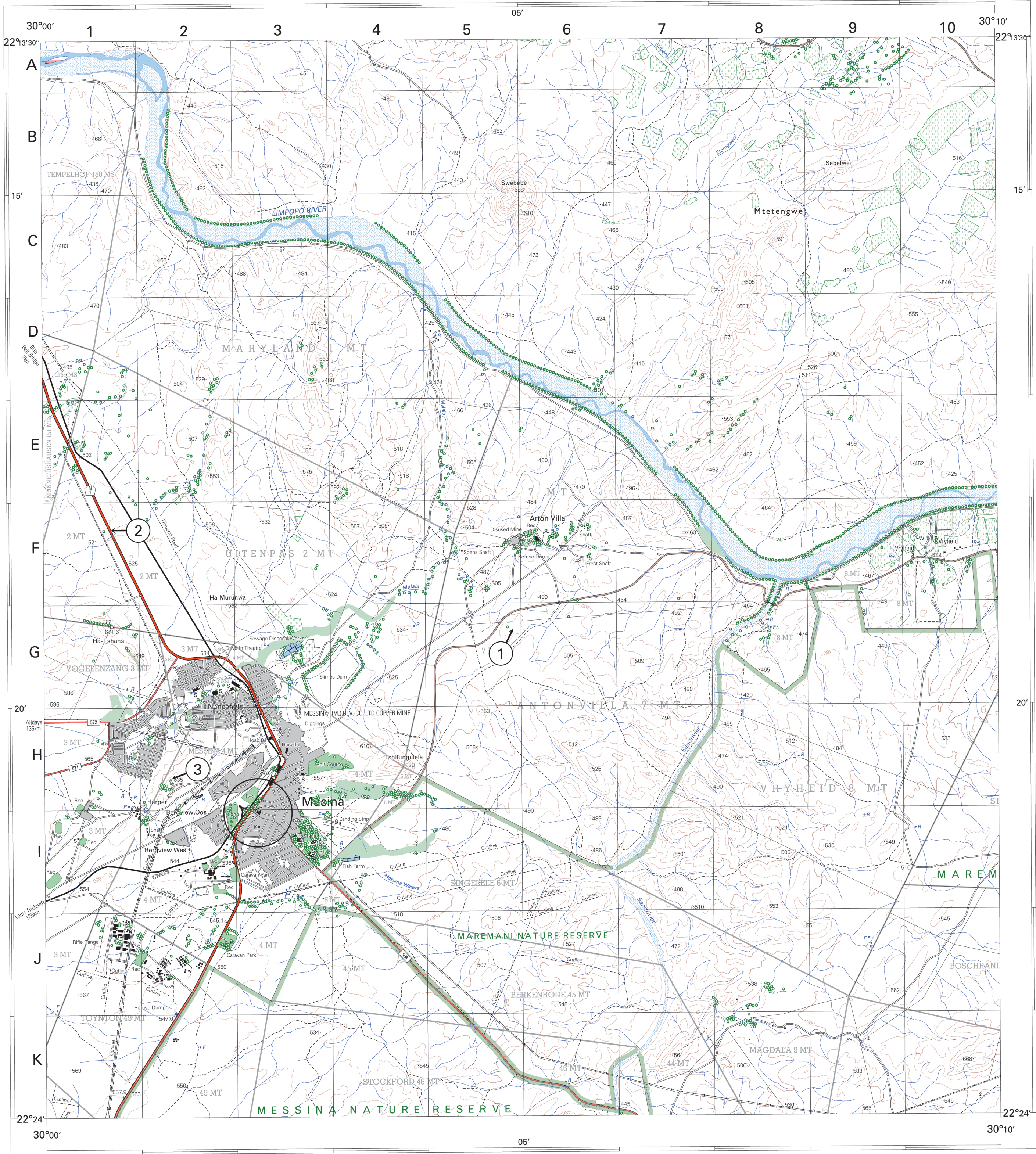


2230AA&AC MUSINA

1:50 000 SOUTH AFRICA
SUID-AFRIKA



Published by the Chief Directorate: Surveys and Mapping, Private Bag X10, Mowbray
Gepubliseer deur die Hoofdirekoraat: Opmetings en Kartering, Private Bag X10, Mowbray

© State Copyright 2003 Staatsouteursreg
This map may not be reproduced by any means, including digital, without prior permission.
Hierdie kaart mag nie deur enige metode herproduseer word, insluitend digitaal, sonder vooraf verkreepte goedkeuring nie.

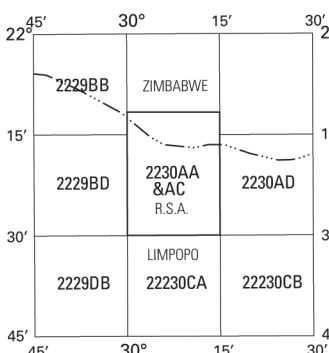
CONTOUR INTERVAL 20 METRES KONTOERTUSSENRUIMTE 20 METER

Heights are in metres above mean sea level
Hoogtes is in meter bo gemiddelde seepeepel
Gauss Conform Projection, Central Meridian 29° East
Hartebeesthoek 94 Datum (WGS84 Ellipsoid)

Mean magnetic declination 12°57' West of True North (July 2002).
Mean annual change 7' Westwards (2000-2005).
Supplied by Hermanus Magnetic Observatory.

Gemiddelde magnetiese deklinasie 12°57' Wes van Ware Noord (Julie 2002).
Gemiddelde jaarlikse verandering 7' Weswaarts (2000-2005).
Voorsien deur die Hermanus Magnetiese Observatorium.

INDEX TO SHEETS INDEXES VAN VELLE



REFERENCE

National Freeway, National Route.....	•••••
Arterial Route.....	•••••
Main Road.....	•••••
Secondary Road, Bench Mark.....	•••••
Other Road, Bridge.....	•••••
Track and Hiking Trail.....	•••••
Railway, Station or Siding.....	•••••
Other Railway, Tunnel.....	•••••
Embankment, Cutting.....	•••••
Power Line.....	•••••
Built-up Area (High, Low Density).....	•••••
Buildings, Ruin.....	•••••
Post Office, Police Station, Store.....	•••••
Place of Worship, School, Hotel.....	•••••
Fence, Wall.....	•••••
Windmill, Monument.....	•••••
Communication Tower.....	•••••
Mine Dump, Excavation.....	•••••
Trigonometrical Station, Marine Beacon.....	•••••
Lighthouse and Marine Light.....	•••••
Cemetery, Grave.....	•••••

VERKLARING

Nasionale Deurpad, Nasionale Roete.....	•••••
Hoofverkeersroete.....	•••••
Sekondêre Pad, Hoopmerk.....	•••••
Andere Pad, Brug.....	•••••
Dowwe Pad en Voetslaanpad.....	•••••
Spoorweg, Stasie of Sylyn.....	•••••
Andere Spoorweg, Tunnel.....	•••••
Opvulling, Deurgroening.....	•••••
Kraglyn.....	•••••
Beboede Gebied (Hoë, Laë Digtheid).....	•••••
Geboue, Ruïne.....	•••••
Poskantoor, Polisie-stasie, Winkel.....	•••••
Plek van Aanbidding, Skool, Hotel.....	•••••
Muur.....	•••••
Dradhelming, Monument.....	•••••
Windpomp, Monument.....	•••••
Kommunikasietoring.....	•••••
Mynhoop, Uitgraving.....	•••••
Peilbaken, Seevaartheek.....	•••••
Vuurtoring en Seevaartheek.....	•••••
Begraafplaas, Graf.....	•••••

Cadastral information supplied by the Surveyor-General
Originaal Farms.....

REFERENCE

International Boundary and Beacon.....	•••••
Provincial Boundary.....	•••••
Protected Area.....	•••••
Perennial River.....	•••••
Perennial Water.....	•••••
Non-perennial River.....	•••••
Non-perennial Water.....	•••••
Dry Water Course.....	•••••
Dry Pan.....	•••••
Marsh and Vlei.....	•••••
Pipeline (above ground).....	•••••
Water Tower, Reservoir, Water Point.....	•••••
Coastal Rocks.....	•••••
Prominent Rock Outcrop.....	•••••
Erosion, Sand.....	•••••
Woodland.....	•••••
Cultivated Land.....	•••••
Orchard or Vineyard.....	•••••
Recreation Ground.....	•••••
Row of Trees.....	•••••

VERKLARING

Internasionale Grens en Baken.....	•••••
Provinsiale Grens.....	•••••
Bewerings Gebied.....	•••••
Standhoudende Rivier.....	•••••
Standhoudende Water.....	•••••
Nie-standhoudende Rivier.....	•••••
Nie-standhoudende Water.....	•••••
Droë Loop.....	•••••
Droë Pan.....	•••••
Moeras en Vlei.....	•••••
Pyplyn (bo die grond).....	•••••
Wattertoring, Reservoir, Waterpunt.....	•••••
Kuslynroete.....	•••••
Prominente Klipbaken.....	•••••
Erosie, Sand.....	•••••
Beboete Gebied.....	•••••
Bewerkte Land.....	•••••
Boerd of Wingerd.....	•••••
Ontspanningssterrein.....	•••••
Rye Bome.....	•••••

Kadastrale inligting verskaf deur die Landmeter-generaal
Oorspronklike Plaas.....

2230AA MUSINA THIRD EDITION
DERDE UITGAWE 1999



2230 AC 11 MUSINA (SOUTH)

ORTHOPHOTO MAP SERIES
ORTOFOTO KAARTREEKS

1 : 10 000

SOUTH AFRICA
SUID-AFRIKA



Gauss Conform Projection. Central Meridian 31° East

Contour Interval 5 Metres

Grid Interval 1 000 Metres

Hartebeesthoek 94 Datum

WGS84 Ellipsoid

1 : 10 000

Gauss Konforme Projeksie. Middelmeridiaan 31° Oos

Kontoertussenruimte 5 Meter

Ruittussenruimte 1 000 Meter

Hartebeesthoek 94 Datum

WGS84 Ellipsoid

2230 AC 11

SECOND EDITION
TWEDE UITGAWE
2004

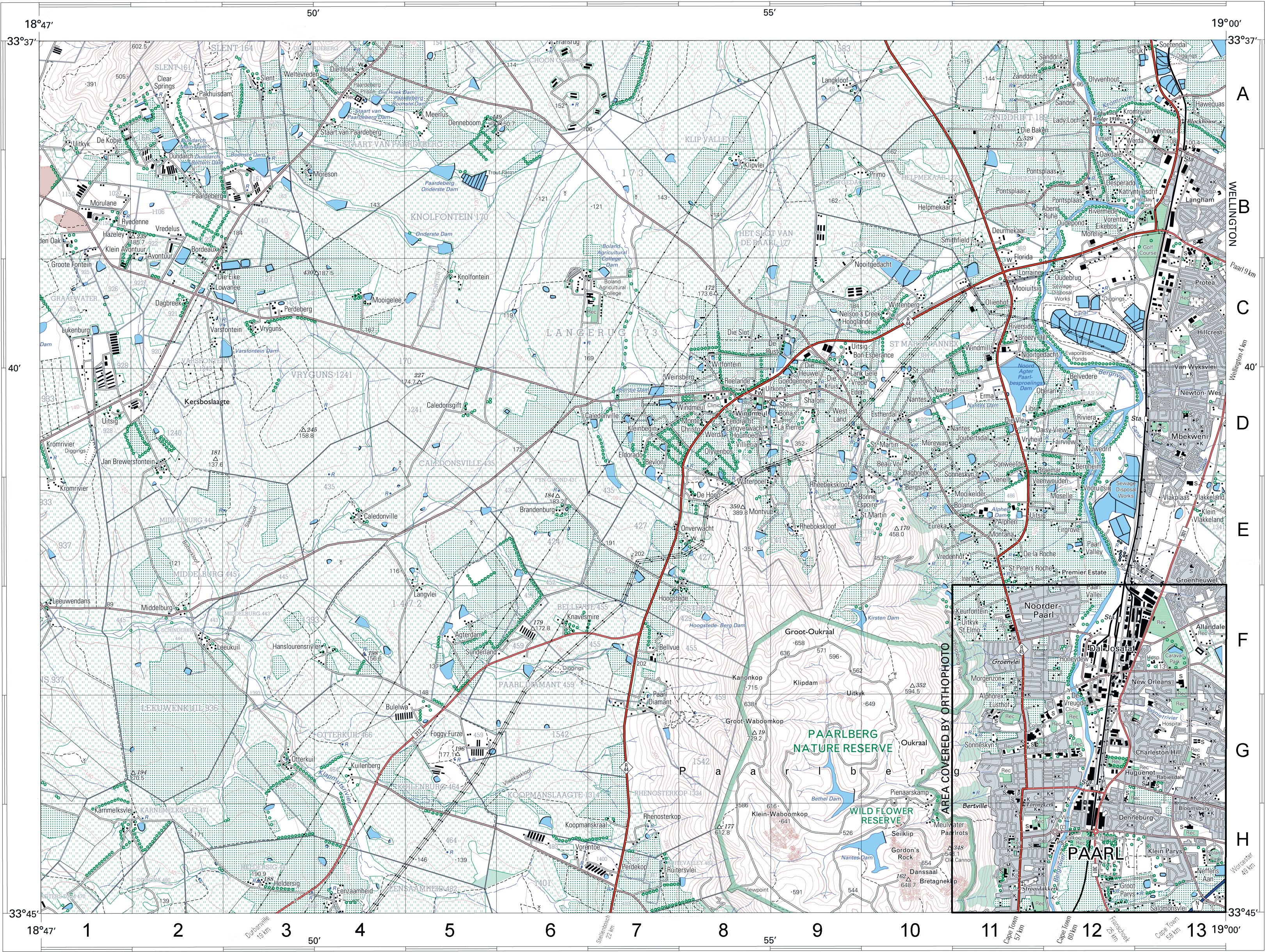
INDEX TO SHEETS INDEX VAN VELLE

2229BD10	2230AC6	2230AC7
2229BD15	2230AC11	2230AC12
2229BD20	2230AC16	2230AC17

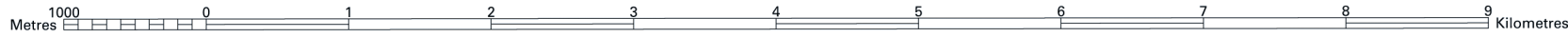
30° 00'

3318DB PAARL

1:50 000 SOUTH AFRICA
SUID-AFRIKA



Published by the Chief Directorate: Surveys and Mapping, Private Bag X10, Mowbray
Gepubliseer deur die Hoofdirektorat: Opmetings en Kartering, Privatebag X10, Mowbray
© State Copyright 2003 Staatsoutersreus
This map may not be reproduced by any means, including digital, without prior permission.
Hierdie kaart mag nie deur enige metode herproduseer word, insluitend digitaal, sonder vooraf verkreepte goedkeuring nie.



Printed by the Government Printer, Private Bag X85, Pretoria
Gedruk deur die Staatsdrukker, Privatebag X85, Pretoria

REFERENCE	VERKLARING
National Freeway; National Route	Nasionale Deurpad; Nasionale Roete
Arterial Road	Hooftverkeersroete
Main Road	Hoofpad
Secondary Road; Bench Mark	Sekondêre Pad; Hoogtemerk
Other Road; Bridge	Andere Pad; Brug
Track and Hiking Trail	Dowwe Pad en Voetslaanpad
Railway; Station or Siding	Spoorweg; Stasie of Sylyn
Other Railway; Tunnel	Andere Spoorweg; Tunnel
Embankment; Cutting	Opvulling; Deurgrawing
Power Line	Kraglyn
Built-up Area (High, Low Density)	Beboude Gebied (Hoë, Laë Digtheid)
Buildings; Ruin	Geboue; Mursie
Post Office; Police Station; Store	Poskantoor; Polisie-stasie; Winkel
Place of Worship; School; Hotel	Plek van Aanbidding; Skool; Hotel
Fence; Wall	Dradheining; Muur
Windmill; Monument	Windpomp; Monument
Communication Tower	Kommunikasietoring
Mine Dump; Excavation	Myndoop; Uitgraving
Trigonometrical Station; Marine Beacon	Peilbaken; Seevaarbak
Lighthouse and Marine Light	Vuurtooring en Seevaartlig
Cemetery; Grave	Begraafplaas; Graf

Cadastral information supplied by the Surveyor-General
Oorspronklike Plaas

Mean magnetic declination 23°33' West of True North (July 2002).
Mean annual change 6' Westwards (2000-2005).
Supplied by Hermanus Magnetic Observatory.
Gemiddelde magnetiese deklinasie 23°33' Wes van Ware Noord, Julie 2002.
Gemiddelde jaarlikse verandering 6' Weswaarts (2000-2005).
Voorsien deur die Hermanus Magnetiese Observatorium.

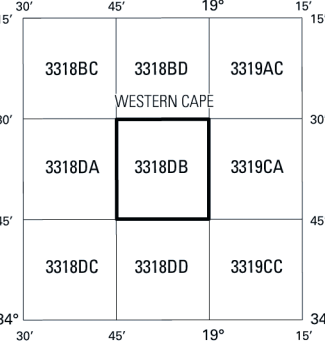
Whilst every effort is made to ensure the accuracy of this map, users noting errors and omissions are requested to notify the Chief Directorate: Surveys and Mapping.

Heights are in metres above mean sea level
Hoogtes is in meter bo gemiddelde seesspieël

CONTOUR INTERVAL 20 METRES KONTORTUUSSENRIJTE 20 METER

Gauss Conform Projection, Central Meridian 19° East.
Hartebeesthoek 94 Datum (WGS84 Ellipsoid).

INDEX TO SHEETS INDEXES VAN VELLE



Alle pogings moontlik word aangewend om die akkuraatheid van hierdie kaart te verseker.
Gebruikers word versoek om die Hoofdirektorat: Opmetings en Kartering, te verwittig van enige foute of weglatings.

The grid lines of the South African Co-ordinate System are indicated in the margin by short black ticks at 10 000 metre intervals, with co-ordinate values in units of 10 000 metres in blue.

Die rolyne van die Suid-Afrikaanse Koördinaatsisteem word in die kanteurte aangetoon deur kort swart strepies 10 000 meter van mekaar, met koördinaatwaardes in eenhede van 10 000 meter in blou.

REFERENCE

International Boundary and Beacon	Internasionale Grens en Baken
Provincial Boundary	Provinsiale Grens
Protected Area	Bewerings Gebied
Perennial River	Standhoudende Rivier
Non-perennial River	Nie-standhoudende Rivier
Non-Perennial Water	Nie-standhoudende Water
Dry Water Course	Droë Loop
Dry Pan	Droë Pan
Marsh and Vlei	Moeras en Vlei
Pipeline (above ground)	Pyflyn (bo die grond)
Water Tower; Reservoir; Water Point	Watertoring; Reservoir; Waterpunt
Coastal Rocks	Kuslynrotse
Prominent Rock Outcrop	Prominente Klibbank
Erosion; Sand	Erosie; Sand
Woodland	Beboste Gebied
Cultivated Land	Bewerkte Land
Orchard or Vineyard	Boord of Wingerd
Recreation Ground	Ontspanningsterrein
Row of Trees	Rye Bome

Kadastrale inligting verskiet deur die Landmeter-generaal
Oorspronklike Plaas

Geographical names, shown in this type face, have not been officially approved.
Geografiese name, in hierdie letterbeeld, is nie amptelik goedgekeur nie.



3318DB PAARL SIXTH EDITION
SESDE UITGAWE 2000

1:10 000

SUID-AFRIKA
SOUTH AFRICA

3318 DB 25 PAARL

ORTOFOTO KAARTREEKS
ORTHOPHO MAP SERIES



Ge publiseer deur die Hoofdirektoraat: Opmetings en Grondinligting, Private Bag X10, Mowbray.
Published by the Chief Directorate: Surveys and Land Information, Private Bag X10, Mowbray.
Fotografie 498/304
Photography 498/304
© Staatsouteursreg 1993 State Copyright

Gauss Konforme Projeksie. Middelmeridiaan 19° Oos
Kontoertussenruimte 5 Meter
Ruittussenruimte 1 000 Meter

1:10 000



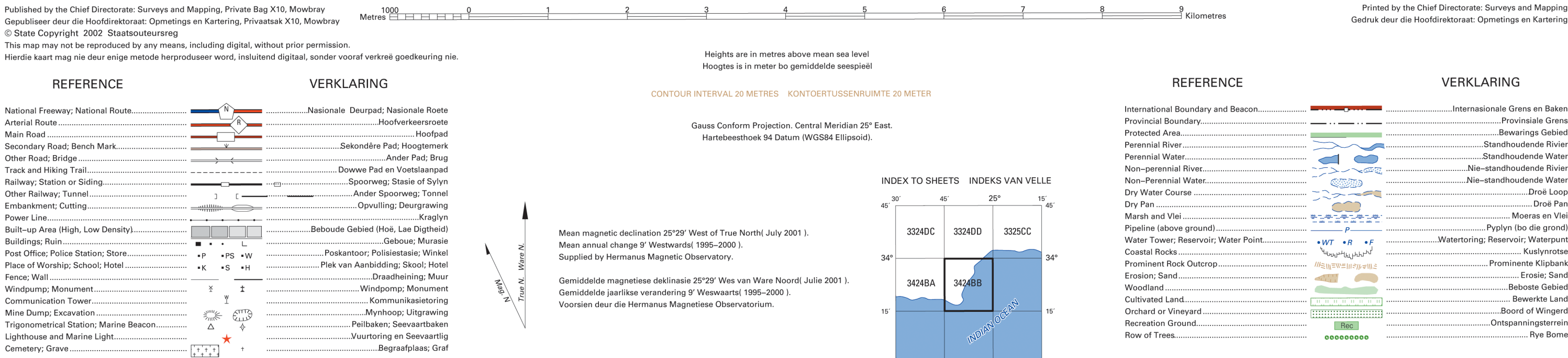
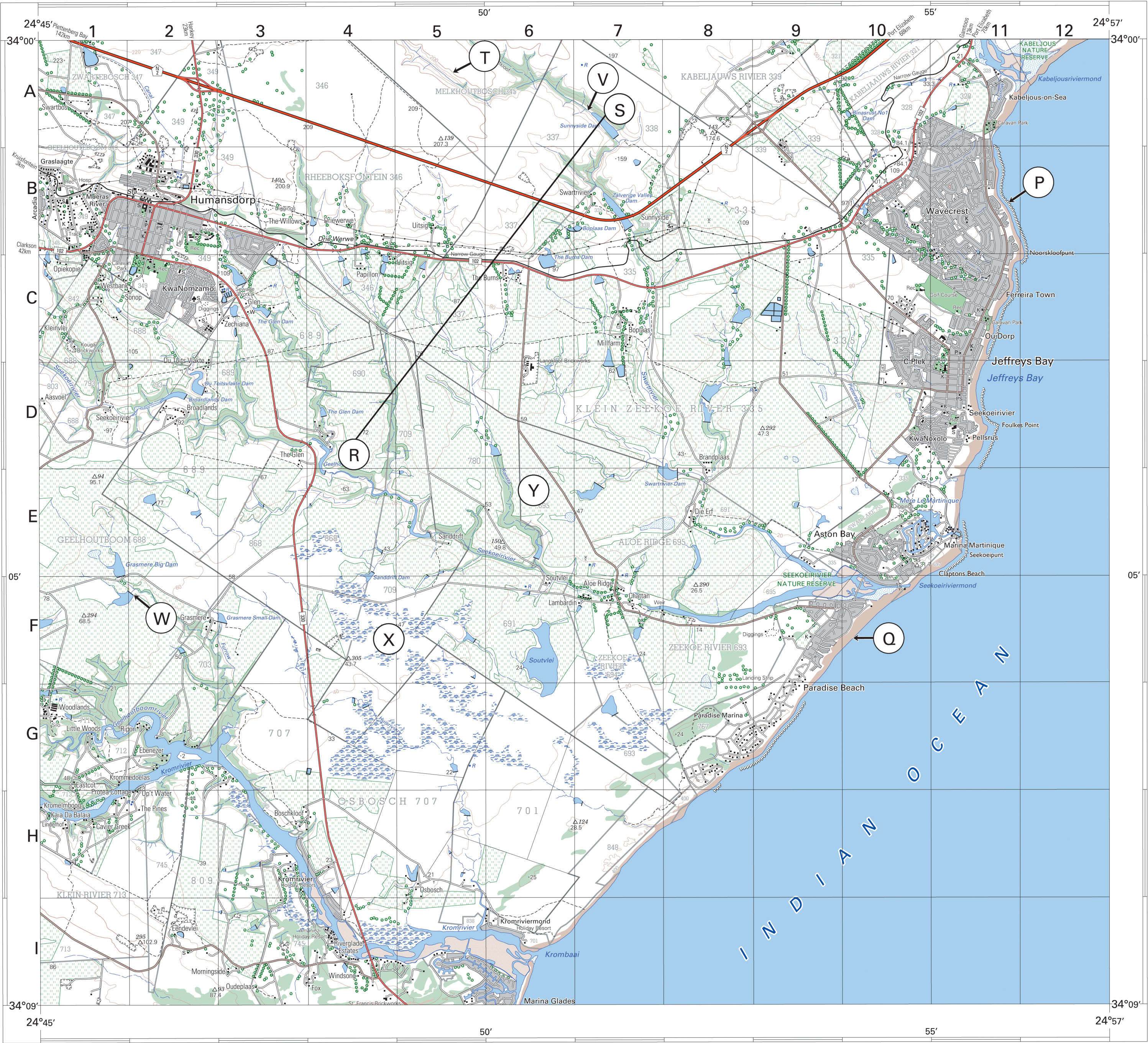
Gauss Conform Projection. Central Meridian 19° East
Contour Interval 5 Metres
Grid Interval 1 000 Metres

3318 DB 25 DERDE UITGAW
THIRD EDITION
1992

INDEXES VAN VELLE			INDEX TO SHEETS		
DB19	DB20	CA16	DB24	DB25	CA21
DD4	DD5	CC1			

3424BB HUMANSDORP

1:50 000 SOUTH AFRICA
SUID-AFRIKA



Whilst every effort is made to ensure the accuracy of this map, users noting errors and omissions are requested to notify the Chief Directorate: Surveys and Mapping.



Alle pogings moontlik word aangewend om die akkuraatheid van hierdie kaart te verseker. Gebruikers word versoek om die Hoofdirektorat: Opmetings en Kartering, te verwittig van enige foute of weglatings.

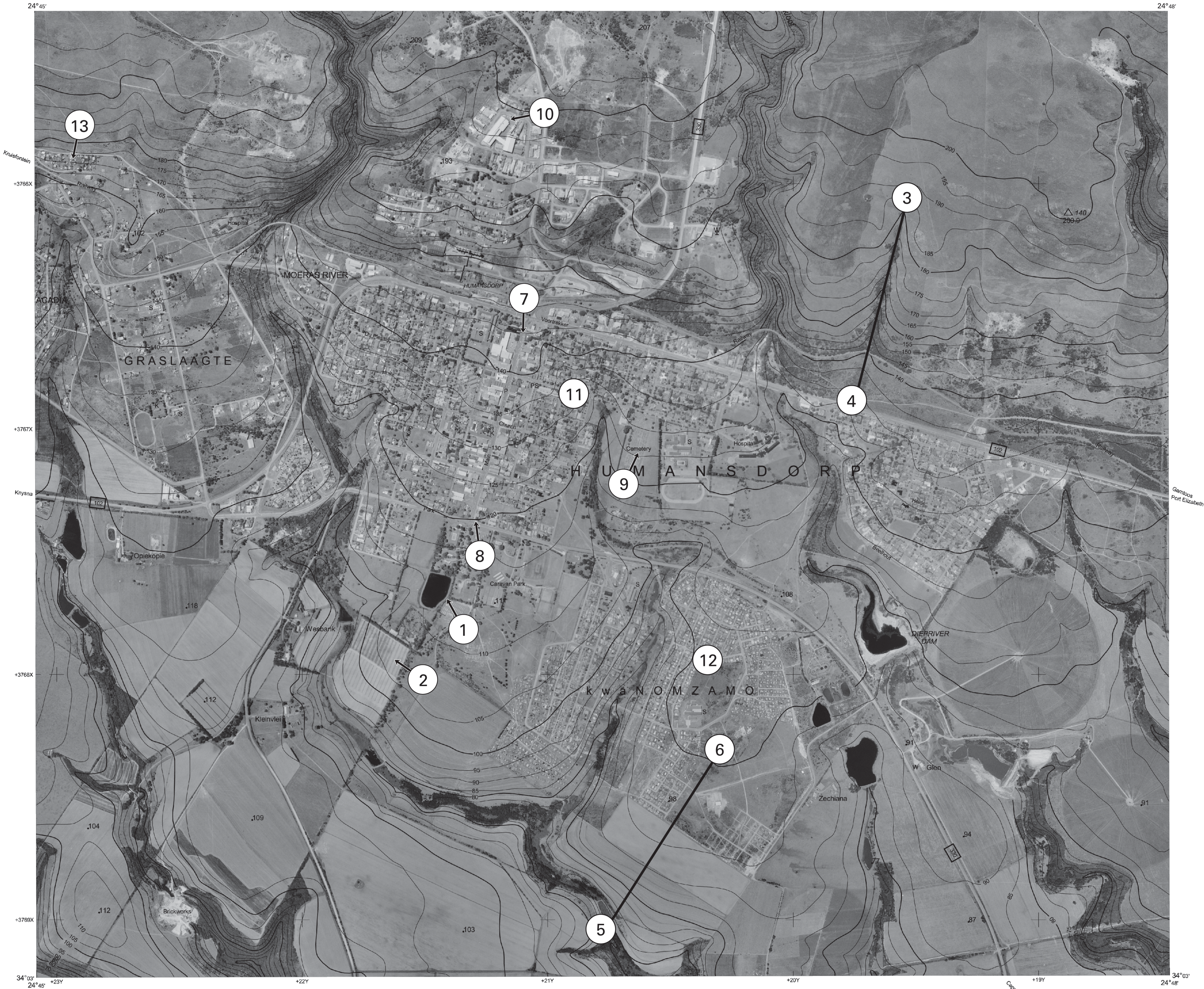
3424BB HUMANSDORP THIRD EDITION DERDE UITGAWE 1999

3424 BB 1 HUMANSDORP

ORTHOPHO MAP SERIES
ORTOFOTO KAARTREEKS

1 : 10 000

SOUTH AFRICA
SUID-AFRIKA



Published by the Chief Directorate: Surveys and Mapping, Private Bag X10, Mowbray.
Gepubliseer deur die Hoof Direkoraat: Opmetings en Kartering, Private Sak X10, Mowbray
Photography 498/357
Fotografie 498/357
© State Copyright 2001 Staatskousersreg

Whilst every effort is made to ensure the accuracy of this map, users noting errors and omissions are requested to notify the Chief Directorate: Surveys and Mapping.
Alles pogings moontlik word aangewend om die akkuraasheid van hierdie kaart te verseker. Gebruikers word versoek om die Hoofdirekoraat: Opmetings en Kartering, te verwittig van enige foute of weglatings.

Gauss Conform Projection. Central Meridian 25° East
Contour Interval 5 Meters
Grid Interval 1 000 Meters
Hartebeesthoek 94 Datum
WGS84 Ellipsoid

1:10 000



Gauss Konforme Projeksie. Middelmeridiaan 25° Oos
Kontourtussenruimte 5 Meter
Ruittussenruimte 1 000 Meter
Hartebeesthoek 94 Datum
WGS84 Ellipsoid

3424 BB 1

SECOND EDITION
TWEDE UITGAWE
1999

INDEX TO SHEETS		INDEXS VAN VELLE	
3324D020	3324D021	3324D022	
3424BA5	3424BB1	3424BB2	
3424BA10	3424BB6	3424BB7	