

FACILITATION EXAMINATIONS 2017
UGANDA ADVANCED CERTIFICATE OF EDUCATION
GEOMETRICAL AND BUILDING DRAWING P720/2

PAPER 2

3HOURS

INSTRUCTIONS TO STUDENTS:

- Attempt all questions in this question paper
- A drawing paper size a2 is provided, use both sides if necessary
- Where dimensions are not provided use your own discretion to determine missing dimensions
- Figures in this question paper are not drawn to scale
- Interpret properly the specifications and figures provided before you attempt any question
- Neatness and good pencil work will carry marks

Fig. 1 shows a line diagram of a Z-shaped Bungalow that is gabled on sides M and R and hipped on all other sides.

SPECIFICATIONS

The house is to be constructed using the following specifications.

FOUNDATION: 600mm wide by 225mm thick concrete strip foundation at a depth of 900mm from the ground level.

DOORS: D1: 1500x 2100mm double leaf five panel door,
D2: 900x2100mm framed match boarded door,

WINDOWS: All windows are casement metallic.
W1: 600 x 600mm, W2: 1500 x 1200mm and
W3: 1200 x 1200mm

WALLS: All walls are 225mm thick. Height from floor to wall plate is 3000mm

FLOORS: Timber suspended floor on 225mm sleeper walls on 100mm concrete slab on 150mm hardcore stones.

ROOF: Double pitched roof with 30° pitch, covered with iron sheets on 1000mm x 50mm purlins, 100mm x 50mm rafters and 125mm x 50mm tie beams on wall plates 100mm x 75mm.

QUESTIONS

Qn.1. Use the specification and the given drawing, to draw a good proportional freehand pictorial sketch with corner 'P' in the fore ground. **23mks**

Qn.2. To scale of **1:50**, draw the ground plan with related symbols in correct positions for the Doors and windows. Show fitments in the Dining and sitting room. **25mks**

Qn.3. To scale of **1:50** draw the sectional elevation on the cutting plane **A-A** and show the constructional details of foundation/floor, walls and roof. **25mks**

Qn.4. To scale of; **1:20** Draw the back elevation of one leaf of **D1** and name all members

12mks

Qn.5. To scale of; **1:10** Draw the isometric view of a one and a half brick thick Flemish bond corner.

12mks

Qn.6. At the bottom right hand corner of the drawing paper draw the title block and in it clearly print; Your Name, Random No./Index no., Examination paper code, Title of the drawing, Date and the scales used.

03mks

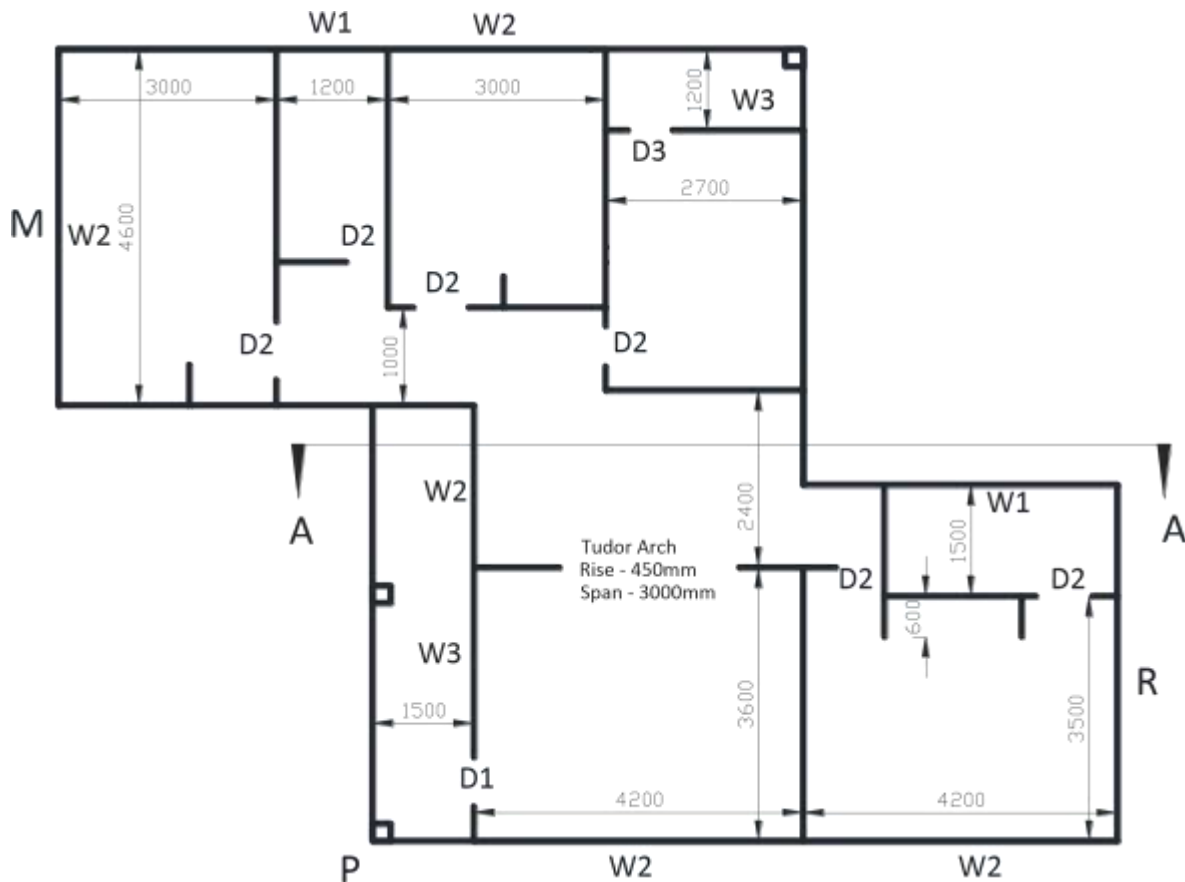


Fig.1 Line diagram